

.8

casi studio **pet architecture**

KKhouse
tiny house
TN house
ADH architects
HP house
akira yoneda
row house
tatao ando
house in Dortmund
archifactory
c-house
g-house
i-house
l-house
jun aoki
aco house
ani house
das house
gaku house
house bow-wow
house tower
juicy house
kus house
tokyo house
atelier bow-wow
skin house
atelier tekuto
skin house
shigeru ban
Meuli house
bearth+deplazes architects
rivo house
Nelson bravo cecilia risco
weekend house in vallemaggia
roberto briccola
himuro house
house YK
kazuhiro kojima+kazuko akamatsu / Cat
tower house in brasschaat
jo crepan
GNS house
PLV house
maria giuseppina grasso cannizzo
O house
Kei ichi irie
T house
toyo ito
2x2 grids
house in maruyama
K house
Koh kitayama
house in higashinada
waro kishi
plastic house
kenko kuma
No.5 house
Markus and kajsa mostrom
house in futakoshinchi
house in musasikosugi
manabu naya
house in kamakura
house O-ta
taira nishizawa
house in asagaya-minami
koji ogawa architect and associates
house in takaban
satoshi okada
polycarbonate house
otsuka
KAM house
KTO house
MON house
NAK house
OJI house
SEG house
SGA house
SGW house
TOK house
mitsuhiko sato
living room
Gabriela seifert
house+
rabbit house
white cave
atsushi yagi

A D H architects

KK house

location tokyo
realization 2004
building area 130.16mq
floor area 48.15mq

tiny house

location tokyo
realization 2001
building area 165.52mq
floor area 45.25mq

TN house

location tokyo
realization 2001
building area 114.66mq
floor area 51.20mq



KK house



tiny house



TN house



a k i r a y o n e d a

HP house

location tokyo
realization 2004
building area 80.00mq
floor area 30.00mq



HP house



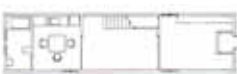
t a d a o a n d o

row house

location osaka
realization 1976
building area 64.70mq
floor area 33.70mq



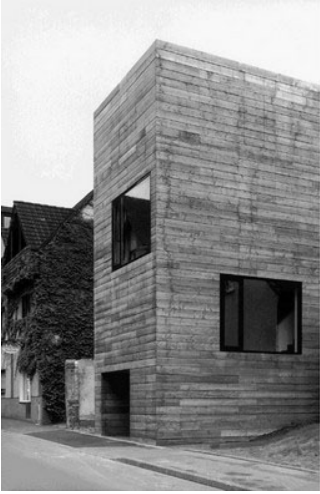
row-house



archifactory

house in dortmund

location	dortmund
realization	2006
building area	173.00mq
floor area	46.00mq



house in dortmund

j u n a o k i

c house

location tokyo
realization 2000
building area 35.00mq
floor area 15.00mq

g house

location tokyo
realization 2004
building area 127.30mq
floor area 47.30mq

i house

location tokyo
realization 2001
building area 48.00mq
floor area 18.00mq

l house

location tokyo
realization 1999
building area 66.00mq
floor area 35.00mq



c house





g house







I house



atelier bow-wow

aco house

location tokyo
realization 2005
building area 84.86mq
floor area 35.51mq

ani house

location chiagasaki
realization 1998
building area 121.85mq
floor area 46.74mq

das house

location tokyo
realization 2002
building area 74.00mq
floor area 36.00mq

house bow-wow

location	tokyo
realization	2005
building area	211.27mq
floor area	59.76mq

house tower

location	tokyo
realization	2006
building area	65.28mq
floor area	18.44mq

juicy house

location	tokyo
realization	2005
building area	121.81mq
floor area	43.20mq

kus house

location	tokyo
realization	2004
building area	123.18mq
floor area	42.24mq

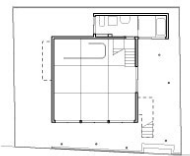
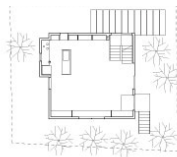
tokyo house

location	tokyo
realization	2004
building area	-
floor area	-



aco house

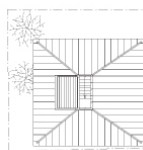




ani house

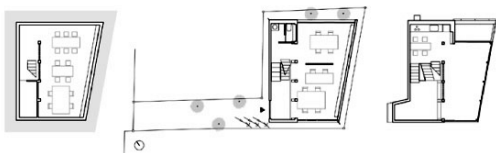


das house



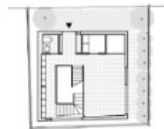
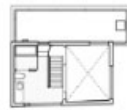


house bow-wow





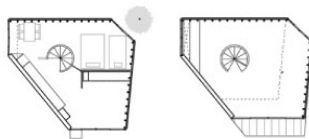
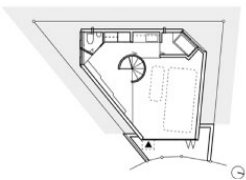
house tower



juicy house

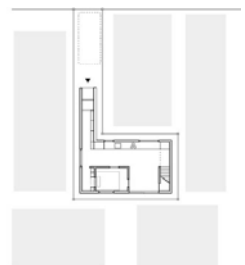


kus house





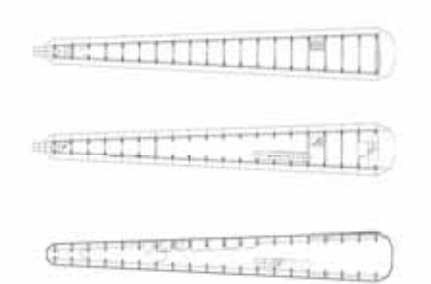
tokyo house



atelier tekuto

skin house

location	tokyo
realization	2005
building area	30.00mq
floor area	18.00mq



skin house

shigeru ban

naked house

location	saitama-ken
realization	2000
building area	148.00mq
floor area	148.00mq



house



bearth+deplazes architects

meuli house

location	flasch
realization	2001
building area	118.20mq
floor area	41.00mq



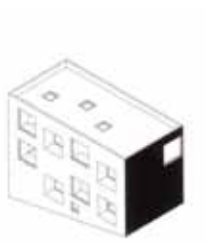
meuli house



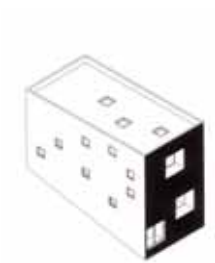
n e l s o n b r a v o c e c i l i a r i s c o

rivo house

location	vakliva
realization	2003
building area	160.00mq
floor area	55.00mq



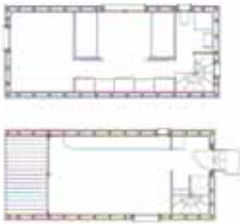
rivo house



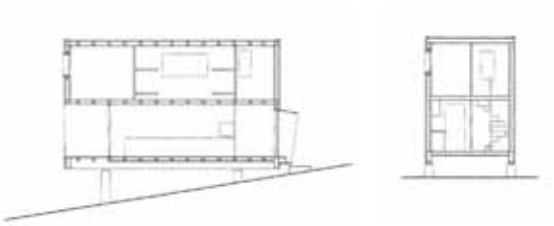
roberto briccola

weekend house

location	vallemaggia
realization	2001
building area	94.00mq
floor area	48.00mq



weekend house



kazuhiro kojima+kazuko akamatzu/Cat

himuro house

location tokyo
realization 2004
building area 117.00mq
floor area 117.00mq

house YK

location chiba-city
realization 2004
building area 198.00mq
floor area 76.00mq



himuro house



house YK



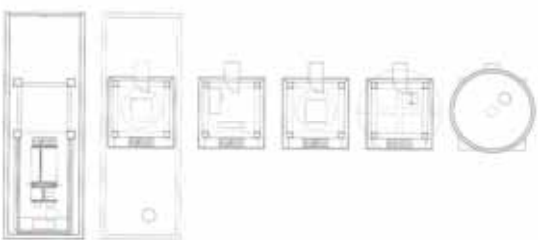
j o c r e p a n

tower house

location	brasschaat
realization	2000
building area	128.00mq
floor area	16.00mq



tower house



maria giuseppina grasso cannizzo

GNS house

location scoglitti
realization 2004
building area 24.00mq
floor area 12.00mq

PLV house

location vittoria
realization 1998
building area 92.00mq
floor area 28.00mq



GNS house





PLV house



kei ichi irie

O house

location tokyo
realization 2003
building area 90.00mq
floor area 37.00mq



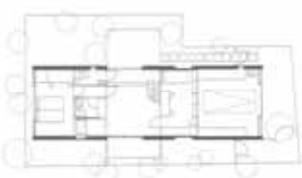
O house



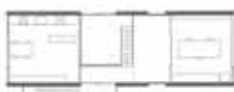
toyo ito

T house

location	tokyo
realization	1999
building area	114.00mq
floor area	57.00mq



T house



k o h k i t a y a m a

2x2 grids

location	saitama
realization	2004
building area	125.20mq
floor area	46.56mq

house in manuyama

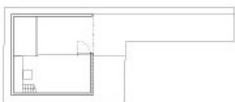
location	tokyo
realization	2005
building area	156.26mq
floor area	46.29mq

K house

location	tokyo
realization	2002
building area	134.28mq
floor area	42.20mq

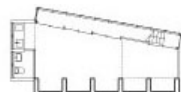
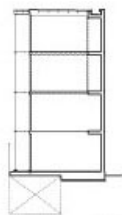
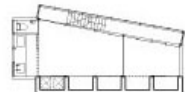


2x2 grids





house in manuyama





K house



waro kishi

house in higashinada

location	higashinada
realization	1992
building area	87.00mq
floor area	30.00mq

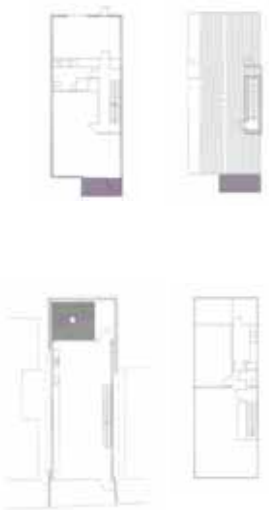


house in higashinada

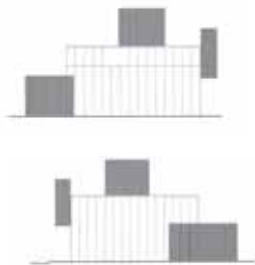
k e n g o k u m a

plastic house

location tokyo
realization 2002
building area 240.00mq
floor area 85.30mq



plastic home



markus and kajsa mostrom

No.5 house

location nacka
realization 2003
building area 130.00mq
floor area 130.00mq



No.5 house



manabu naya

house in futakoshinchi

location	futakoshinchi
realization	2005
building area	52.00mq
floor area	30.00mq

house in musaskosugi

location	musaskosugi
realization	2006
building area	71.00mq
floor area	34.00mq



house in futakoshinchi





house in musaskosugi



taira nishizawa

house in kamakura

location	kanagawa
realization	2001
building area	62.00mq
floor area	31.00mq

house O-ta

location	tokyo
realization	2004
building area	-
floor area	-



house in kamakura





house O-ta





house O-ta



koj ogawa architect and associates

house in asagaya-minami

location	asagaya-minami
realization	2003
building area	130.00mq
floor area	62.00mq



house in asagaya-minami



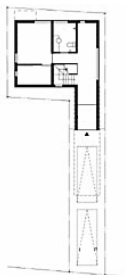
s a t o s h i o k a d a

house in takaban

location takaban
realization 2003
building area 126.44mq
floor area 53.19mq



house in takaban



otsuka

polycarbonate house

location -
realization -
building area 20.00mq
floor area 20.00mq



polycarbonate house



m i t s u h i k o

KAM house

location tokyo
realization 1997
building area 61.00mq
floor area 33.00mq

KTO house

location tokyo
realization 2003
building area 66.12mq
floor area 32.13mq

MON house

location tokyo
realization 2004
building area 96.00mq
floor area 32.00mq

NAK house

location tokyo
realization 2004
building area 106.64mq
floor area 31.67mq

OJI house

location tokyo
realization 1997
building area 105.57mq
floor area 29.70mq

SEG house

location tokyo
realization 2001
building area 88.27mq
floor area 31.93mq

SGA house

location tokyo
realization 2004
building area 88.75mq
floor area 38.40mq

SGW house

location tokyo
realization 1999
building area 96.60mq
floor area 39.11mq

TOK house

location tokyo
realization 2001
building area 106.47mq
floor area 57.33mq



KAM house



KTO house





MON house



NAK house





OJI house





SEG house





SGA house



SGW house



TOK house



g a b r i e l a s e i f e r t

living room

location	gelnhausen
realization	2004
building area	56.00mq
floor area	14.00mq



living room



atsushi yagi

house +

location
realization
building area
floor area

rabbit house

location tokyo
realization 2006
building area 137.00mq
floor area 27.00mq

white cave

location tokyo
realization 2005
building area 41.00mq
floor area 23.00mq

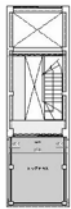
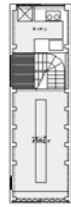
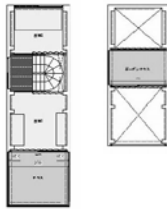


house +





rabbit house





white cave



.8a

casi studio **micro spazi**

rucksack house

stefan eberstadt

nordic watercolour house

niels bruun & henrik corfitsen

cocobello mobile studio

peter haimerl

transportable housing container

markku hedman

prefabricated dwelling unit in innsbruck

holz box tirol

micro compact home

horden+cherry+lee architects lydia haack john hopfener

lab research station

HTA lucern

mobile house-fred

kaufmann 96 architect

nagakin capsule tower

kisho kurokawa

box house

nicholas murcutt

pR 34 house

rojkind architect

rotatable housing cube in dipperz

sturm und wartzeck

camping site in calanas

ubaldo garcia torrente

plywood kit house

atsushi yagi

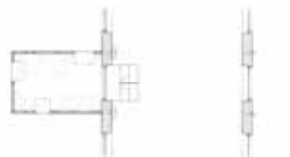
stefan eberstadt

rucksack house

location german
realization 2004
building area 6.25mq



rucksack house



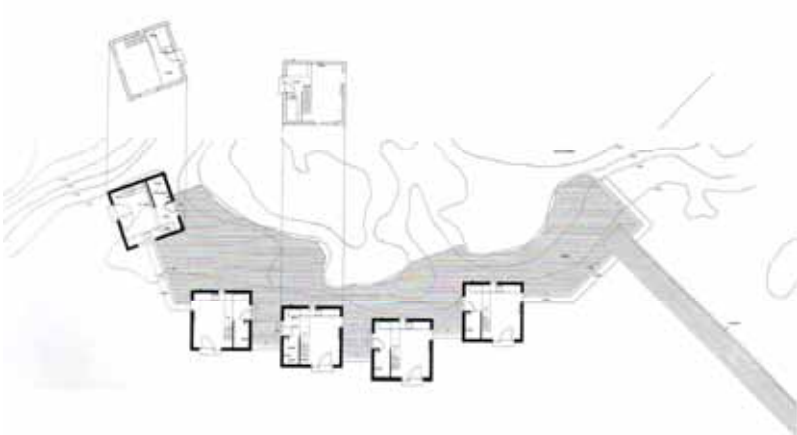
niels bruun&henrik corfitsen

nordic watercolour house

location skarhamn
realization 2000
building area 12.00mq



nordic watercolour house



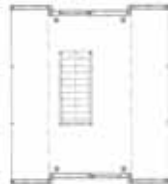
p e t e r h a i m e r l

cocobello mobile studio

location munchen
realization 2003
building area 18.00mq



cocobello mobile studio



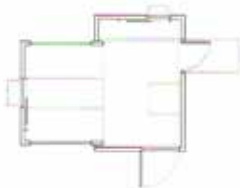
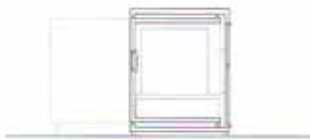
markku hedman

transportable housing container

location helsinki
realization 2001
building area 8.00mq



transportable housing container



holz box tirol

prefabricated dwelling unit in innsbruck

location innsbruck
realization 2000
building area 6.76mq



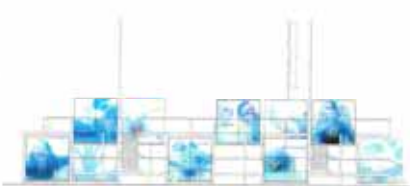
prefabricated dwelling unit



horden+cherry+lee architects
lydia hack
john hopfener

micro compact home

location munchen
realization 2003
building area 7.00mq



micro compact home



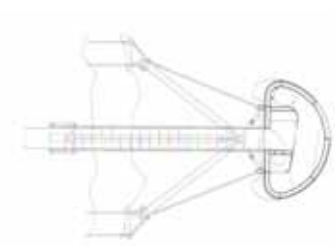
HTA lucern

lab research station

location -
realization 2003
building area 5.00mq



lab research station



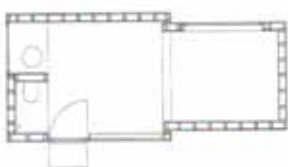
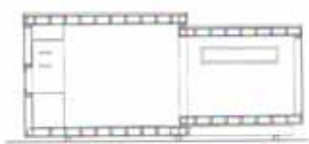
kaufmann 96 architect

mobile house-fred

location dornbirn
realization 2000
building area 9.00mq



mobile house-fred



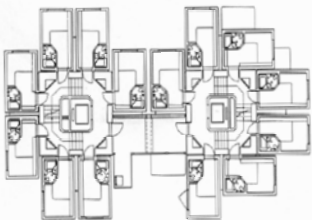
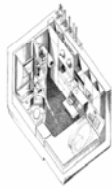
k i s h o k u r o k a w a

nagakin capsule tower

location tokyo
realization 1972
building area 10.00mq



nagakin capsule tower



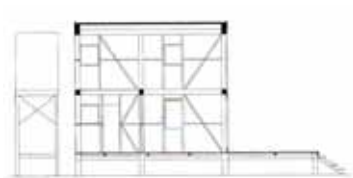
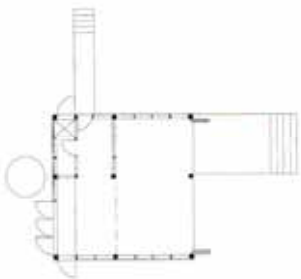
n i c h o l a s m u r c u t t

box house

location new south wales
realization 1999
building area 36.00mq



box house



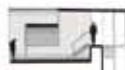
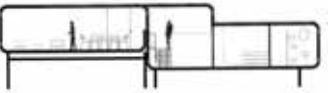
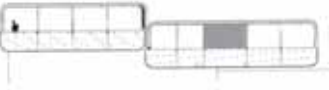
rojkind architect

pR 34 house

location mexico
realization 2004
building area 70.00mq



pR 34 house



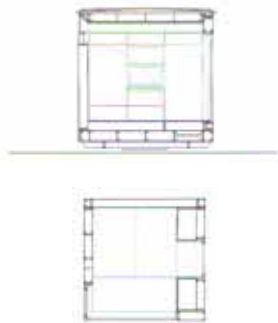
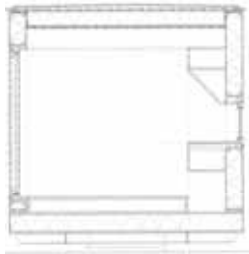
sturm und wartzeck

rotatable housing cube in dipperz

location dipperz
realization 2003
building area 9.00mq



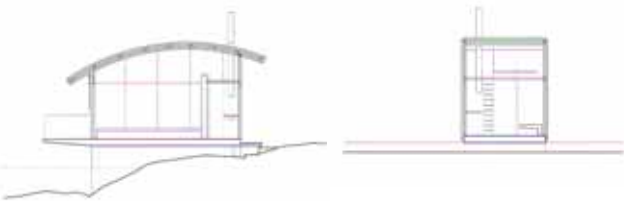
rotatable housing cube in dipperz



u b a l d o g a r c i a t o r r e n t e

camping site in calanas

location calana
realization 2003
building area 15.00mq



camping site in calanas

atsushi yagi

plywood kit house

location tokyo
realization 2000
building area 6.25mq



plywood kit house



.8b

casi studio **analisi tipologica**

apartement

gifu kitagata apartament
kazuyo sejima+ryue nishizawa
sekkei
takanashi

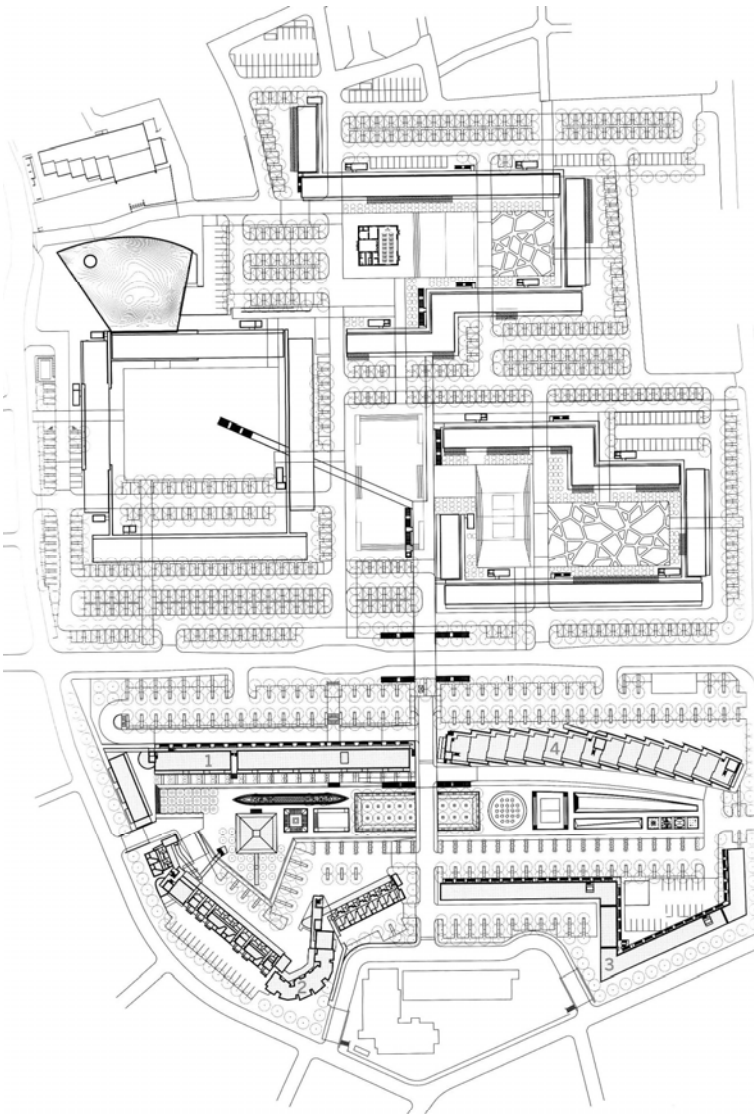
fukuoka housing
steven holl
50% porous space blocks hanoi model
kazuhiro kojima
tokyo university science kojima laboratory
university of tokyo magaribuchu laboratory
eda housing project
chiba manabu architects
apartment
eda apartment
office of ryue nishizawa
flat in todoroki
tsumeyuki toyoda
toyoda doken
kumaki takahashi
ayano uchimura
A studio

**kazuyo sejima+ryue nishizawa
sekkei
takanashi**

gifu kitagata apartment

location	prefettura di gifu
realization	2000
building area	38.988mq

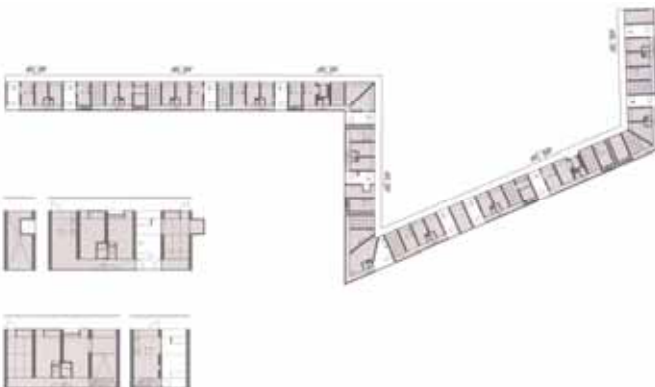
apartement







sejima-nishizawa apartament





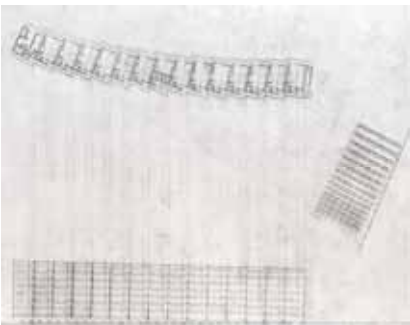
sekkei apartement



apartement



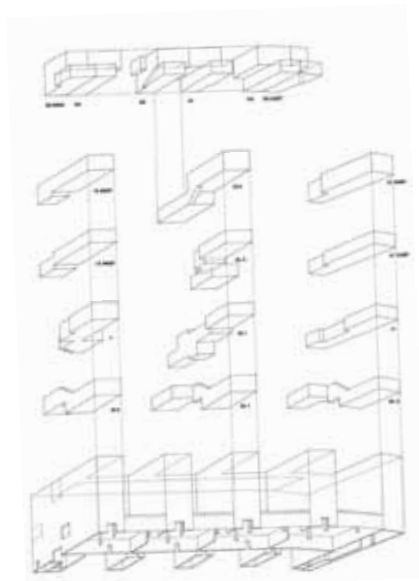
apartement



steven holl

fukuoka housing

location	fukuoka
realization	1991
building area	-
apartment area	40.00mq



fukuoka housing



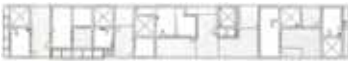
kazuhiro kojima
tokyo university science kojima laboratory
university of tokyo magaribuchii laboratory

50% porous space blocks hanoi model

location	hanoi
realization	2003
building area	-
apartment area	30.00mq



50% porous space blocks



chiba manabu architects

eda housing project

location	denen-toshi
realization	2003
building area	-
apartment area	72.00mq



eda housing project



office of ryue nishizawa

apartement

location	tokyo
realization	2003
building area	-
apartment area	36.00mq

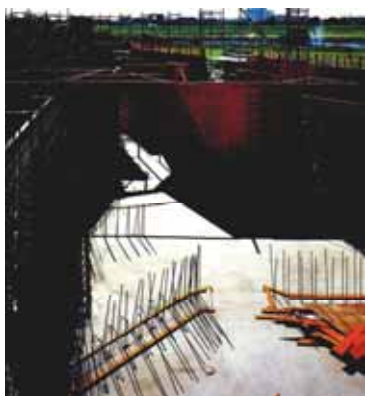
apartement



tsumeyuki toyoda
toyoda doken
kumaki takahashi
ayano uchimura
A studio

flat in todoroki

location	todoroki
realization	2003
building area	-
apartment area	23.00mq



flat in todoroki



.8C

casi studio **dimensionamento dello spazio**

house asama
kawanishi coming cottage B
mini house
aelier bow-wow

M house
S house
kazujo sejima+ryue nishizawa

tokyo small house with the sun
satoshi irei architect & associates

space blocks kamishinjo
kazuhiro kojima/C+A

a e l i e r b o w - w o w

house asama

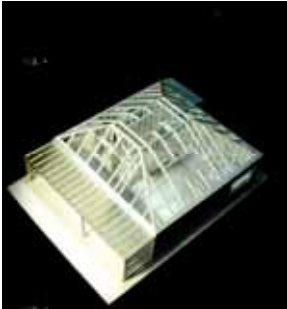
location -
realization 2000
floor area 72.00mq

kawanishi coming cottage B

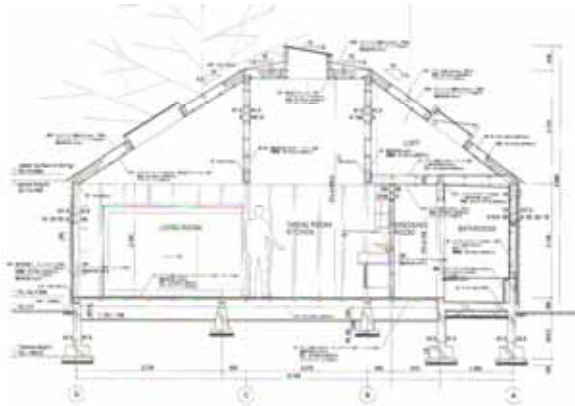
location kawanishi
realization 1998
floor area 63.70mq

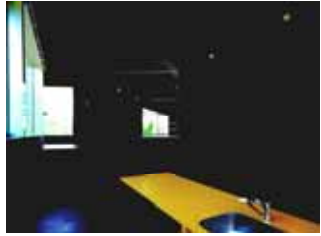
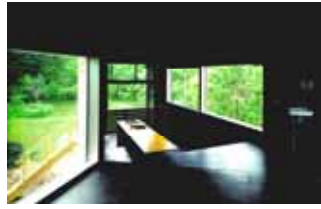
mini house

location tokyo
realization 1999
floor area 40.80mq

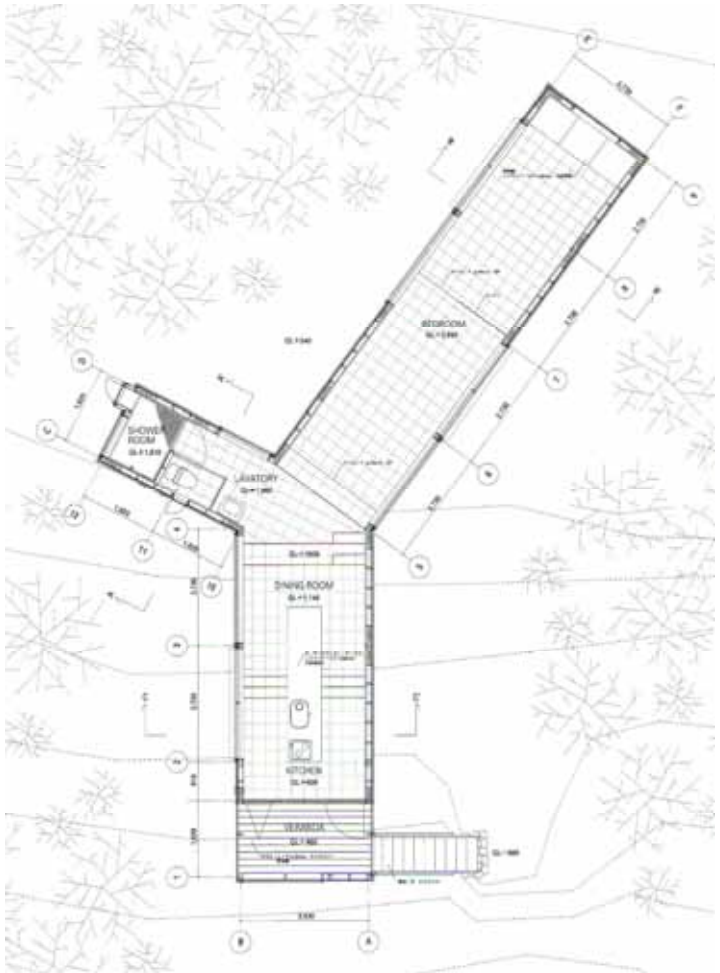


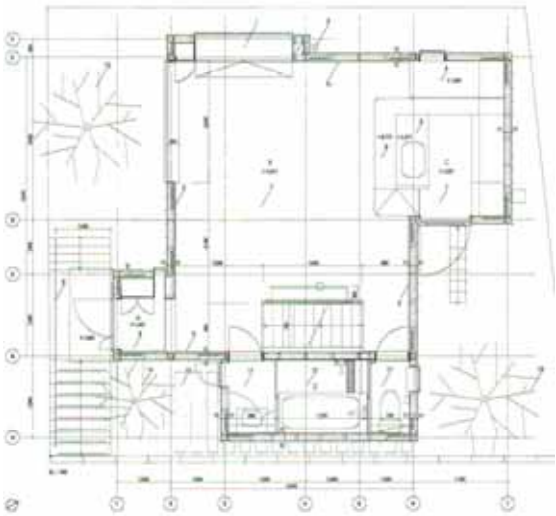
house asama





kawanishi camping cottage





mini house

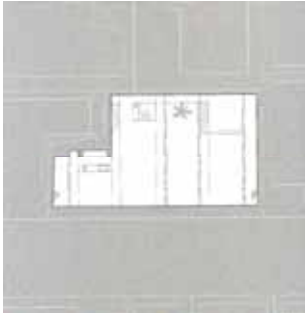
kazujo sejima+ryue nishizawa

M house

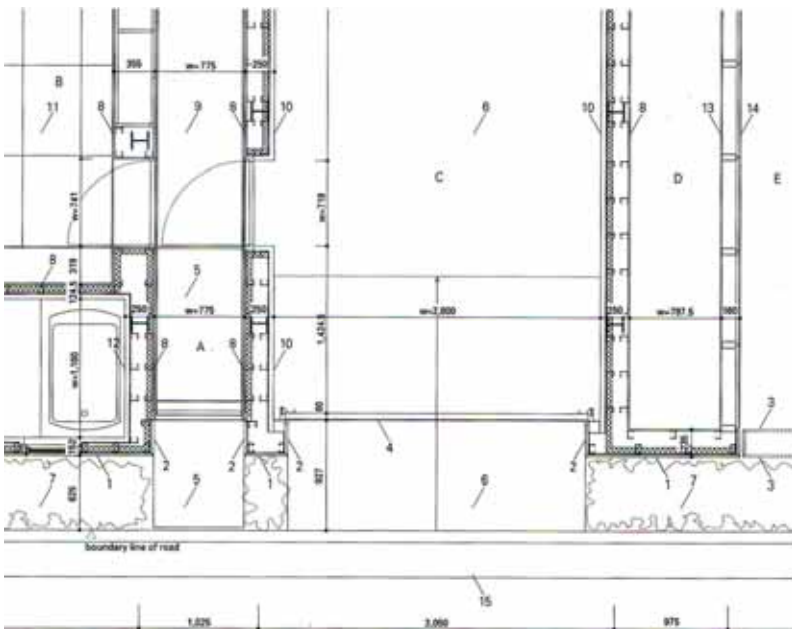
location tokyo
realization 1997
floor area 92.65mq

S house

location tokyo
realization 1998
floor area 79.21mq

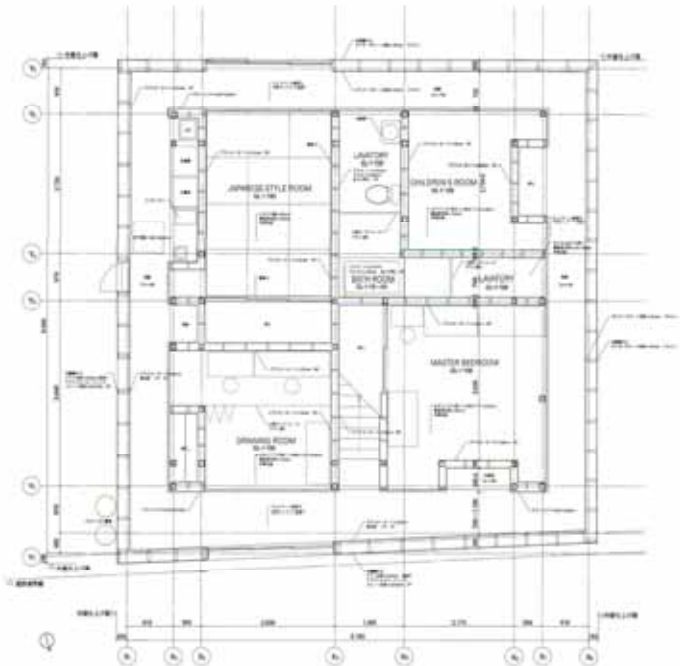


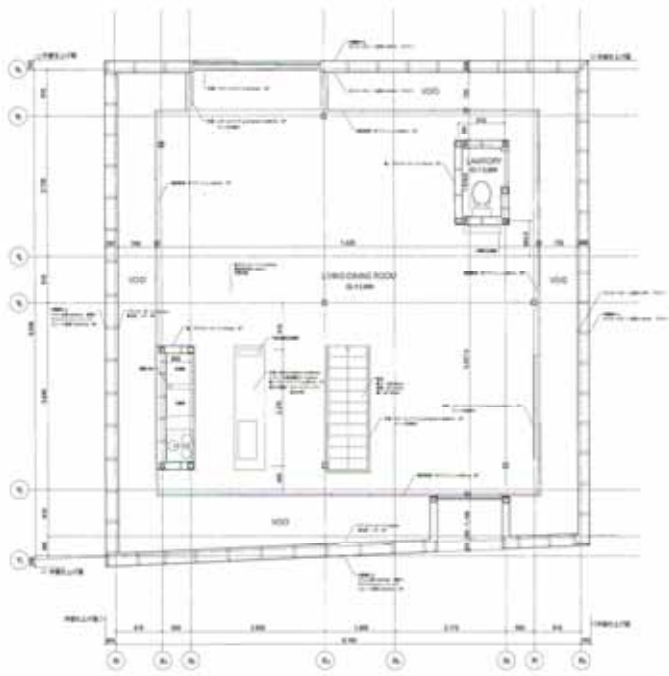
M house





S house



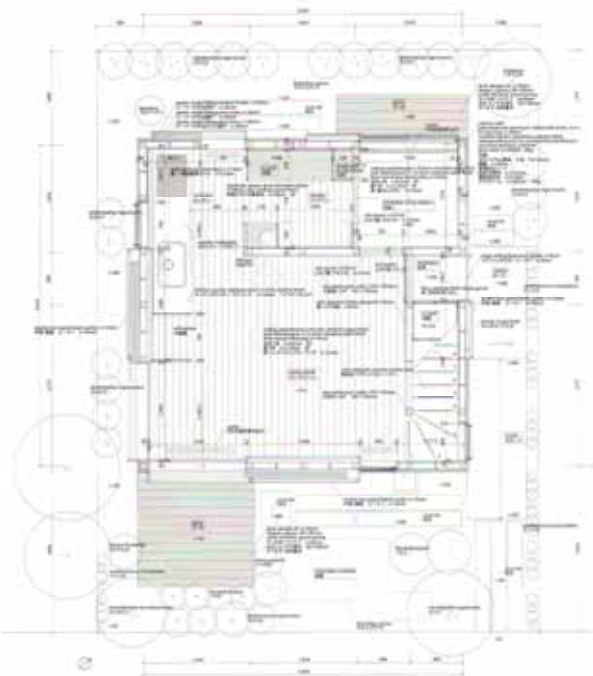
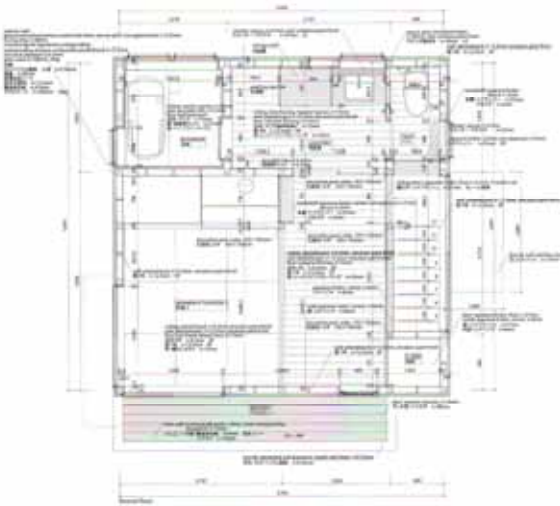


satoshi irei architect & associates

tokyo small house with the sun

location tokyo
realization 1997
floor area 29.16mq

tokyo small house

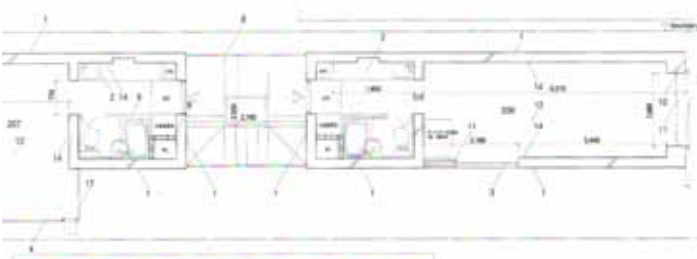
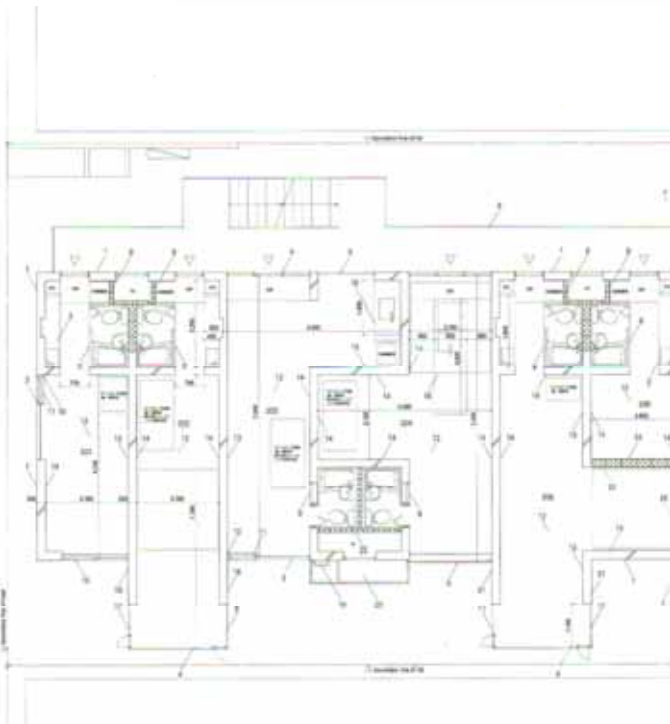
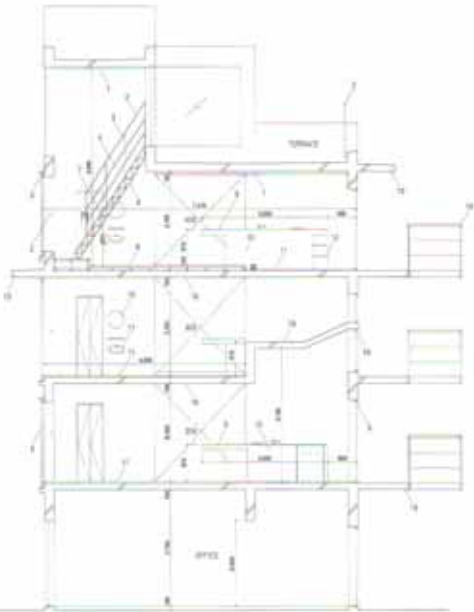


kazuhiro kojima/C+A

space blocks kamishinjo

location osaka
realization 1997
floor area 32.03mq

space blocks kamishinjo



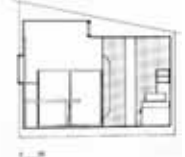
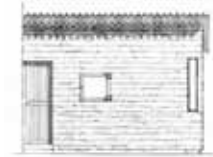
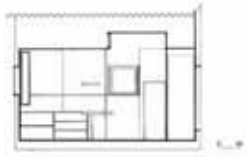
.8d

casi studio **arredo fisso**

cabanon
casa joaul
padiglione svizzero
le corbusier
padiglione del brasil
charlotte perriand+ le corbusier
villa muller

adolf loos
antonello boschi
robert grabe
umberto riva
pug+scarpa

girls' dormitory
gion a.caminada
one family house raselli kalt
conradin clavuot
EMV-intervento sull'ex albergo italia
maria giuseppina grasso cannizzo
summer house with studio in vejby
henning larsens tegnestue A/S
camp in passail
holzbox tirol+armin kathan erich strolz
holiday home in furx
marte.marte
residence de vylder 2
meta architectvurbureau
furniture house
shigeru ban
engawa house
takaharu+yui tezuka/tezuka architects
masahiro ikeda



le cabanon
LE CORBUSIER





casa joau
LE CORBUSIER





padiglione svizzero
LE CORBUSIER





adolf loos



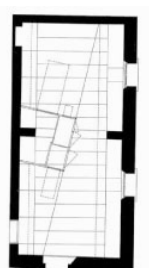
pug+scarpa



robert grabe



antonello
boschi

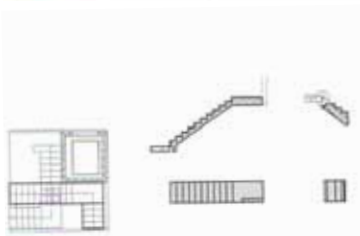
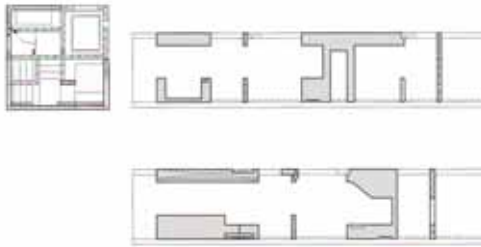




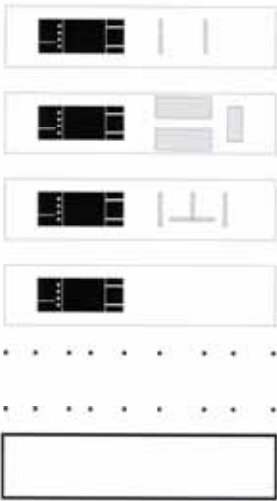
casa in via paravia, milano
UMBERTO RIVA



girls'dormitory
GION A CAMINADA



one family house
CONRADIN CLAVUOT

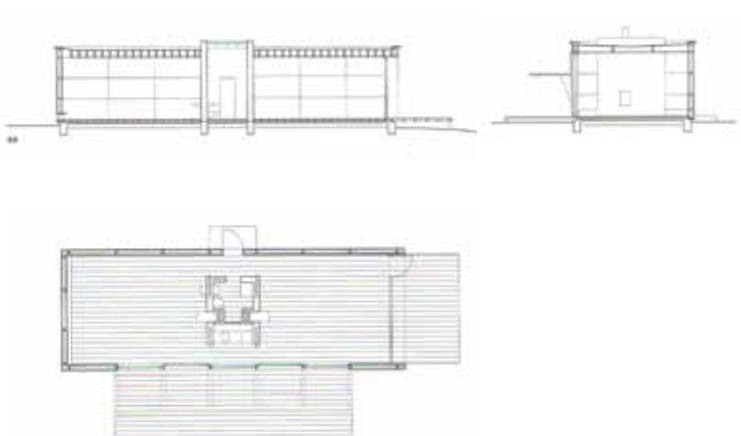


EMV
MARIA GIUSEPPINA GRASSO CANNIZZO



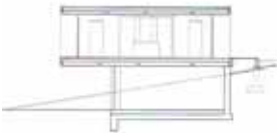
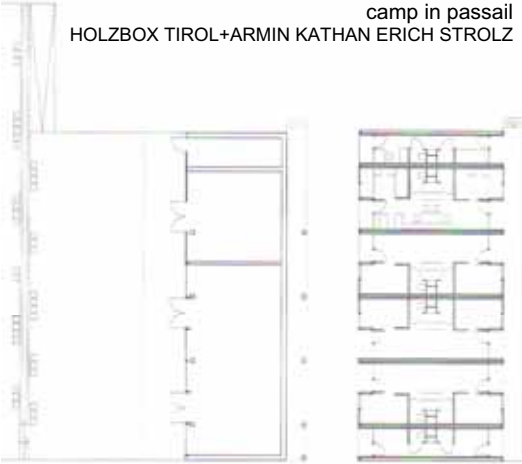


summer house with studio
HENNING LARSENS TEGNESTUE A/S



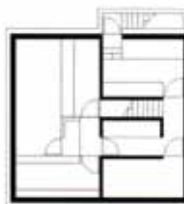


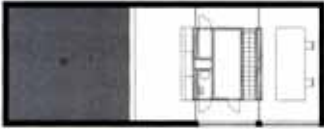
camp in passail
HOLZBOX TIROL+ARMIN KATHAN ERICH STROLZ



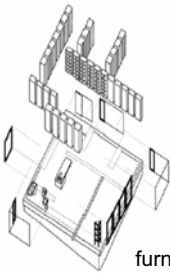
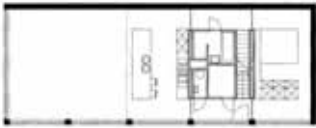


holiday home in furx
MARTE.MARTE





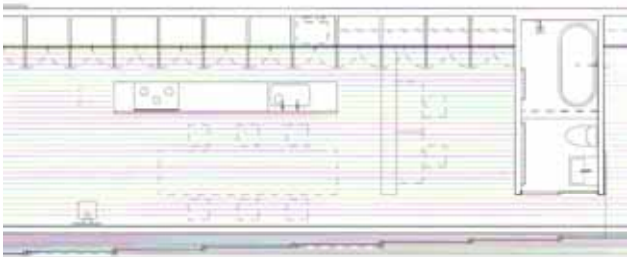
residence de vylde
META ARCHITECTVURBUREAU



furniture house
SHIGERU BAN



engawa house
TAKAHARU+YUI TEZUKA
MASAHIRO IKEDA



.8e

casi studio **analisi tecnologica**

skin house

atelier tekuto

cell brick

atellier tekuto

glass shutter

shigeru ban

studio house

hatsudai apartament

natural shelter

natural strips

masaki endoh + ikeda

la reserve house

sebastian irarrazaval

house in groningen

S house

house in setagaya-ku

toyo ito

house in nippombashi

house in higashi-osaka

house in shimogamo

kim house

waro kishi

F3 house

lime house

koh kitayama

house in hino

house in kamiyoga

manabu naya

modular house in olching

bernhar nicker

prefabricated house from denmark

ONV architects

timber frame house

kumihide oshinomi takeshi samba

mobile house in england

tim pyne

house in a plum grove

kazuyo sejima

prefabricated house in lower austria

gerhard steixner

mobil artist's studio

private house

two row houses

korternie stuhlmacher

house in overijse

buelens vanderlinden

Demonstration house in tosu-city

riken yamamoto & field shop

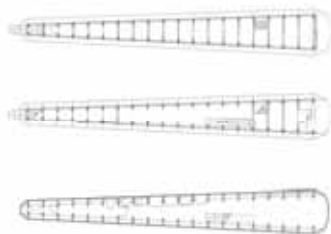
atelier tekuto

skin house

location tokyo
realization 2005
building area 30.00mq
floor area 18.00mq



skin house



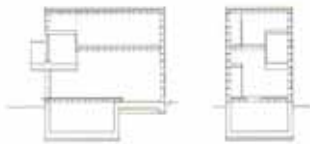
atelier tekuto

cell brick

location tokyo
realization 2004
building area 85.02mq
floor area 32.93mq



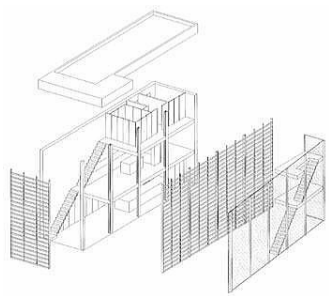
cell brick



shigeru ban

glass shutter

location	tokyo
realization	2004
building area	123.00mq
floor area	42.00mq



glass shutter

masaki endo+hikeda

studio house

location yokohama
realization 1999
building area 104.70mq
floor area 38.00mq

hatsudai apartment

location tokyo
realization 1997
building area -
floor area 47.00mq

natural shelter

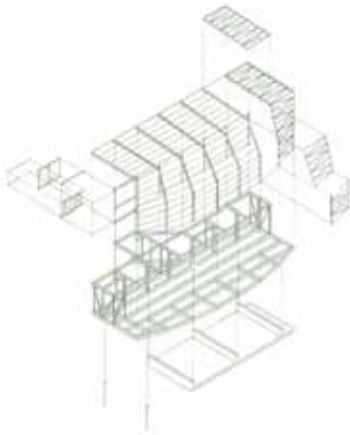
location tokyo
realization 2001
building area 97.00mq
floor area 34.00mq

natural strips

location tokyo
realization 2006
building area 30.00mq
floor area 13.00mq



studio house



hatsudai apartment



natural shelter



natural strips



s e b a s t i a n i r r a r z a v a l

la reserve house

location	colina
realization	2006
building area	140.00mq
floor area	61.00mq



la reserve house



toyo ito

house in groningen

location	groningen
realization	1996
building area	320.00mq
floor area	60.00mq

S house

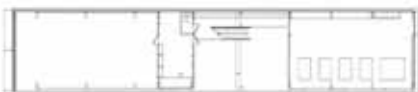
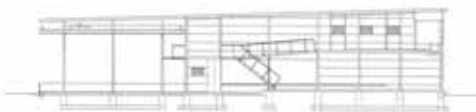
location	groningen
realization	2001
building area	144.00mq
floor area	36.00mq

house in setagaya-ku

location	tokyo
realization	2000
building area	205.00mq
floor area	78.00mq

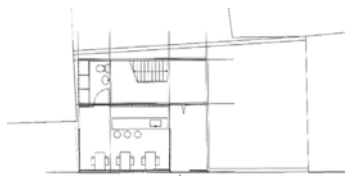
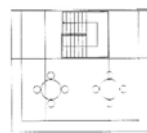
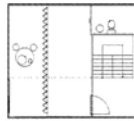
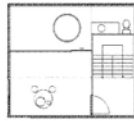
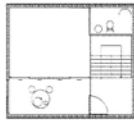


house in groningen



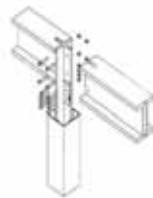


S house





house in setagaya-ku



waro kishi

house in nippombashi

location	nipponbashi
realization	1992
building area	130.00mq
floor area	32.50mq

house in higashi-osaka

location	osaka
realization	1997
building area	208.18mq
floor area	48.00mq

house in shimogamo

location	kyoto
realization	1994
building area	153.60mq
floor area	38.40mq

kim house

location	osaka
realization	1987
building area	76.40mq
floor area	40.76mq



house in nippombashi





house in higashi-osaka





house in shimogamo





kim house



k o h k i t a y a m a

F3 house

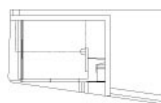
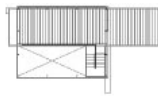
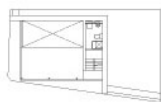
location	kanagawa
realization	2005
building area	121.51mq
floor area	59.84mq

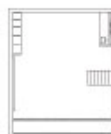
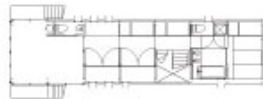
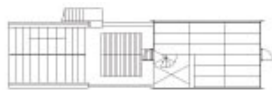
lime house

location	tokyo
realization	2001
building area	154.24mq
floor area	49.00mq



F3 house





lime house

manabu naya

house in hino

location	tokyo
realization	2001
building area	326.32mq
floor area	161.63mq

house in kamiyouga

location	tokyo
realization	2003
building area	64.58mq
floor area	25.19mq



house in hino





house in kamiyouga



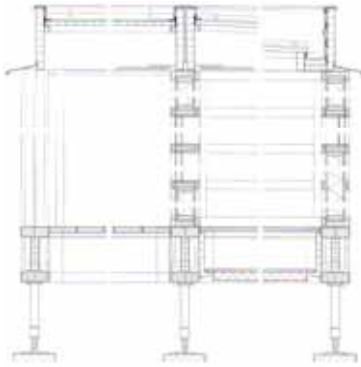
b e m h a r n i c k e r

modular house in olching

location	olching
realization	2000
building area	10.00mq
floor area	10.00mq



modular house



ONV architects

prefabricated house from denmark

location -
realization 2005
building area 60.00mq
floor area 60.00mq



prefabricated house



kumihide oshinomi takeshi samba

timber frame house

location tokyo
realization 1995
building area 69.94mq
floor area 65.34mq



timber frame house



t i m p y n e

mobile house in england

location london
realization 2005
building area 72.00mq
floor area 72.00mq



mobile house



kazuyo sejima

house in a plum grove

location tokyo
realization 2003
building area 82.00mq
floor area 36.40mq



gerhard steixer

prefabricated house in lower austria

location	lower austria
realization	2005
building area	57.00mq
floor area	32.00mq



prefabricated house



k o r t e r n i e s t u h l m a c h e r

mobil artist's studio

location	ulrecht
realization	2003
building area	72.00mq
floor area	72.00mq

private house

location	france
realization	2006
building area	89.00mq
floor area	47.00mq

two row-house

location	ijburg
realization	2005
building area	330.00mq
floor area	87.00mq



mobile artist's house



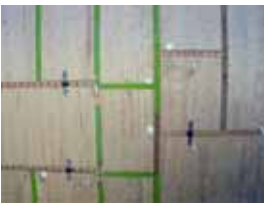


private house





two row-house



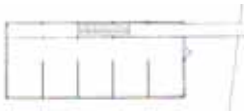
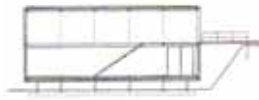
b u e l e n s v a n d e r l i n d e n

house in overijse

location overijse
realization 2003
building area 80.00mq
floor area 60.00mq



house in overjise



riken yamamoto&field shop

demonstration house in tosu-city

location	tosu city
realization	2005
building area	87.00mq
floor area	36.00mq



demonstration house

