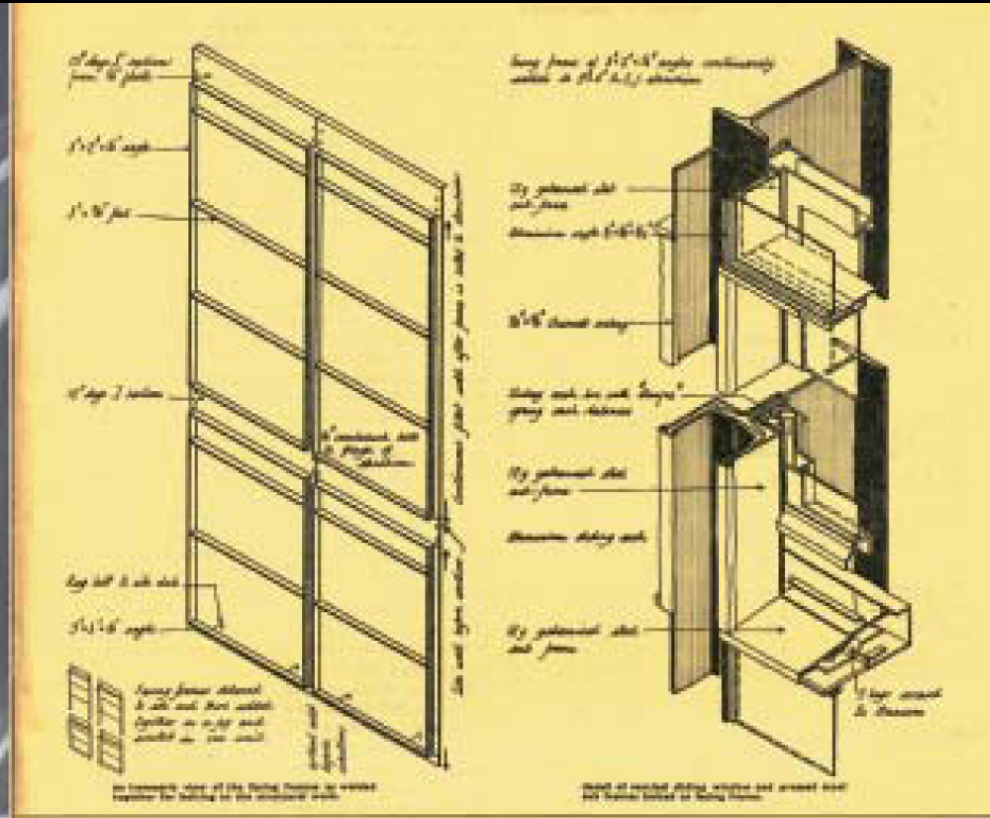
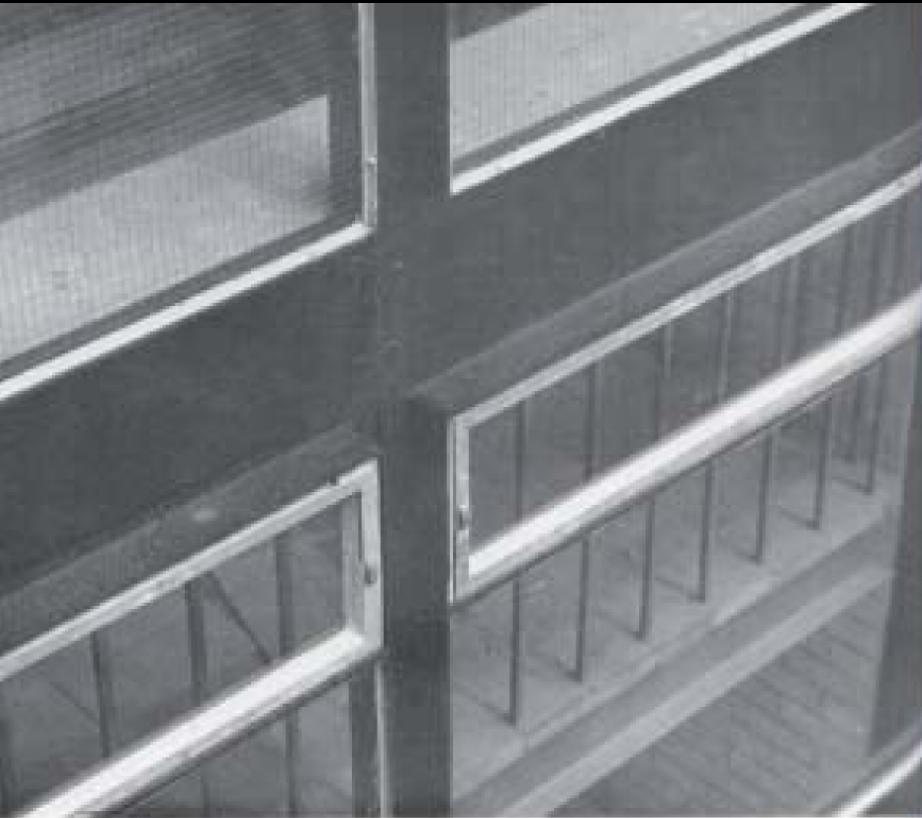


16 Alison & Peter Smithson, Hunstanton Secondary School, 1949-54.

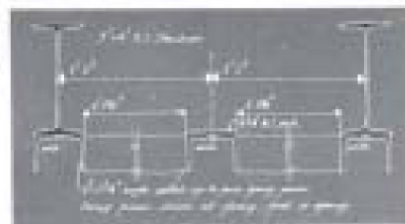


Photography: Architectural Press Archive / RIBA Library Photographs Collection
Architecture: Alison and Peter Smithson



GENERAL BY CONSTRUCTION

If a wall detail is one of the structures the direct glazing system here will be very generally used. The window is fixed to an exterior concrete wall. Due to the low wall height, horizontal members which are used to support light panels, are positioned at 12 in. from top and bottom and 12 in. from side to side.



main block. These are filled with two pieces of 1 in. impregnated case fibreglass, covered with a 2 in. by 1 in. flat lead on one side only, inside and out.

The facing frames welded to the main frames are glazed directly without sub-frames, the walls on the north and west being single glazed and the north and east walls double glazed. 1 in. wired glass is used up to T 5, 4 in. above floor level and a 12 in. horizontally striking ventilator is used continuously round the building on both floors. Specially designed vertical and horizontally sliding windows are also used.

Direct glazing in this way calls for very accurately made steelwork, and the glazing subcontractors asked for tolerances of 1/16 in. between the frames. Their opinion now is that the accuracy achieved by the manufacturer of the steelwork was sufficient and only 50% square of glass had to be returned.

The external walls are mostly glazed, but some have panels of yellow gault bricks. These walls are of two 8-in. skins, with the outer face of the inner skin painted with two coats of thick bituminous paint. Where the brickwork shows steelwork, wire reinforcement is used ver-

tically and horizontally and fixed to the steel with bolts and washers fixed from a rapid hammer gun. Where brickwork had to be cut round steel members a small circular saw bench with an 8-in. carbide-tipped cutting wheel was used.

The gault bricks were found to be very porous and a 2 in. garden wall built with 1:2:8 cement-lime-sand mortar, cracked badly when subjected to the local conditions of frost after prolonged horizontally driven rain. The garden wall was rebuilt in 1:2 lime mortar and this mortar was used for the brick panel walls of the building.

The internal walls are built of 4 in. two-faced gault brickwork, with two leaves each of 4 in. long and of expansion joints.

The floors are constructed of prestressed concrete floor slabs, 18 in. wide, made on chairs welded to the steel beams. They are 4 in. deep, of an inverted trough section, and covered with a half-inch layer of insulation where required. On this are laid out the panel heating coils and the whole is then screeded over. The original intention was to cut away a small portion from the upper edge of the BS2 to allow the floor slabs to be

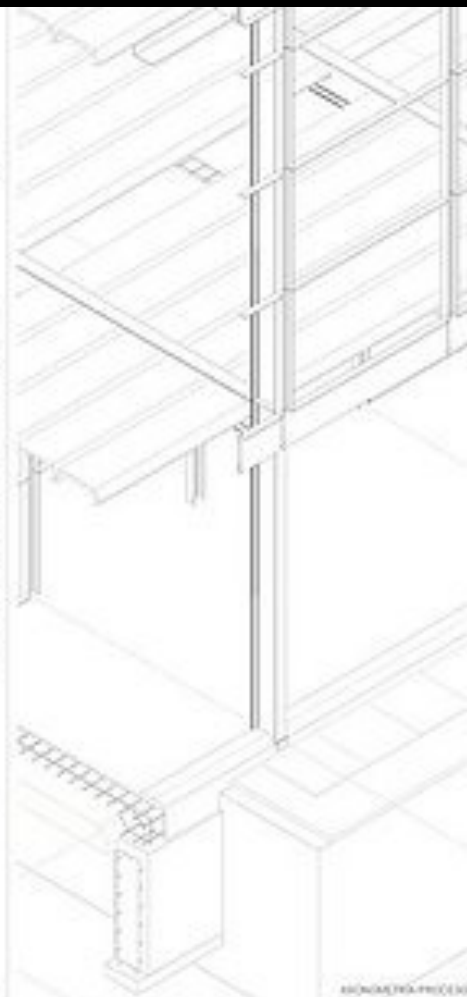
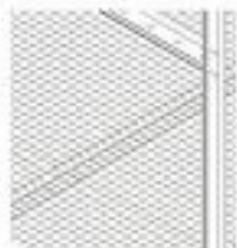


ASIMETRÍA PROCESO
1,5M

PROCESO 2

SOLIDACIÓN DE LA SOLERA

CONCRETO DE UNO DE LAS BARRAS
EN BARRA A CONCRETO EN EL CASO DE
TERMINAL, SIN BARRA



ASIMETRÍA PROCESO
1,5M

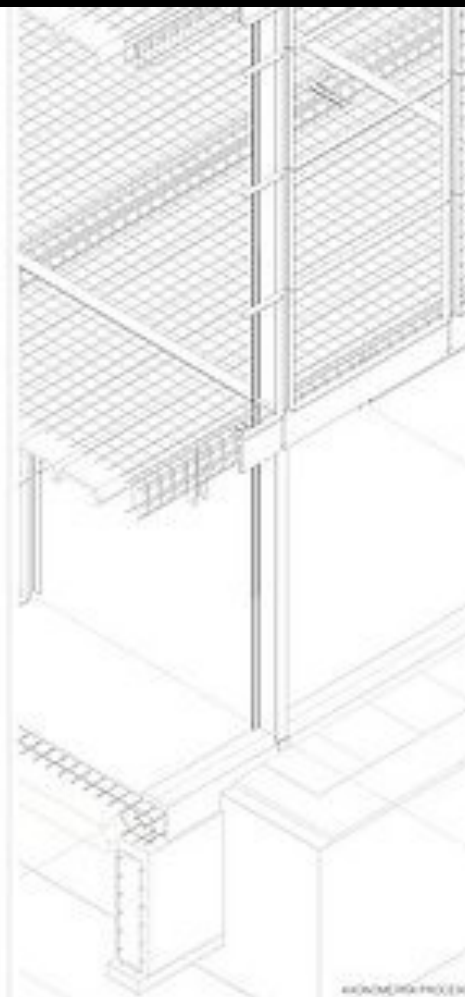
PROCESO 3

**SOLIDACIÓN ESTRUCTURAL
EQUILIBRADA**

CONCRETO DE UNO DE LAS BARRAS
EN BARRA A CONCRETO EN EL CASO DE
TERMINAL, SIN BARRA

AVISO DE LOS FORAJOS

CONCRETO DE UNO DE LAS BARRAS
EN BARRA A CONCRETO EN EL CASO DE
TERMINAL, SIN BARRA

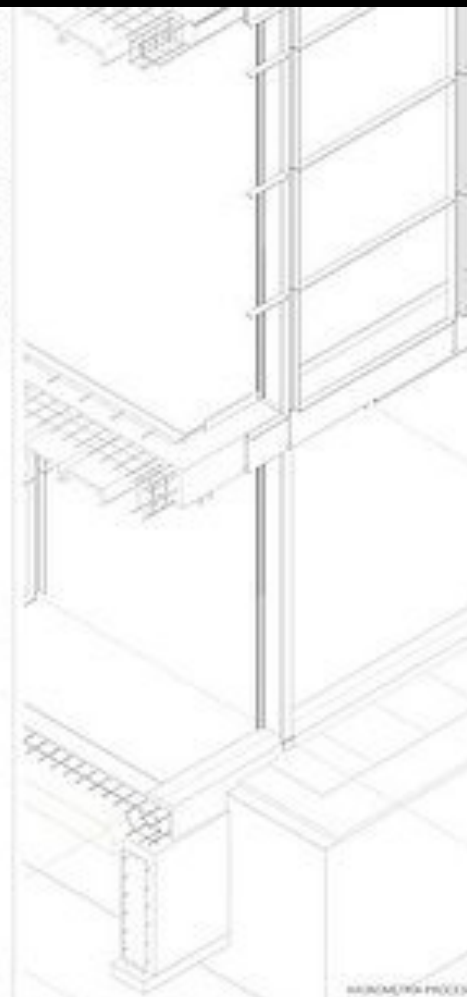


ASIMETRÍA PROCESO
1,5M

PROCESO 4

FORAJOS

CONCRETO DE UNO DE LAS BARRAS
EN BARRA A CONCRETO EN EL CASO DE
TERMINAL, SIN BARRA



ASIMETRÍA PROCESO
1,5M

PROCESO 5

FORAJOS

CONCRETO DE UNO DE LAS BARRAS
EN BARRA A CONCRETO EN EL CASO DE
TERMINAL, SIN BARRA

**AVISO DE LOS CORRENTES
ESPACIO**

CONCRETO DE UNO DE LAS BARRAS
EN BARRA A CONCRETO EN EL CASO DE
TERMINAL, SIN BARRA

CUBIERTA











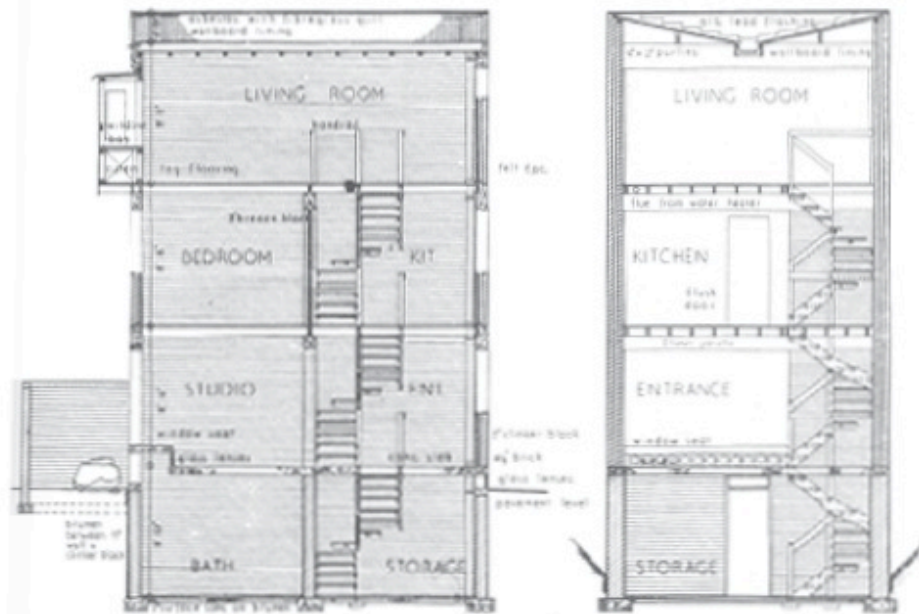




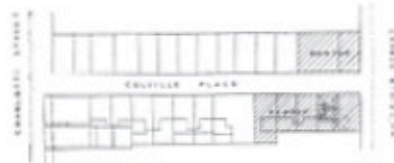
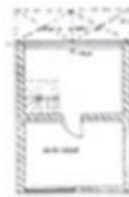
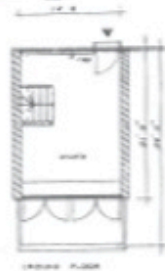
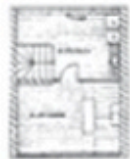








Above: Sections (scale 16 ft. = 1 in.). Below: plans and elevations (Scale 24 ft. = 1 in.)



















1870 846 05 00
8 55 2 28 8

BELL











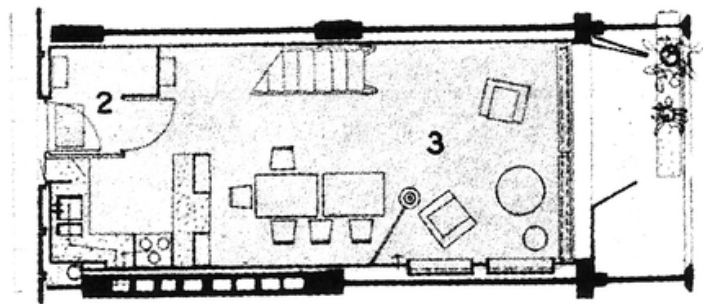
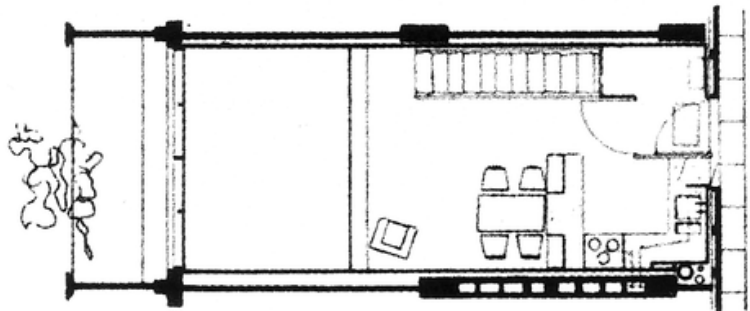
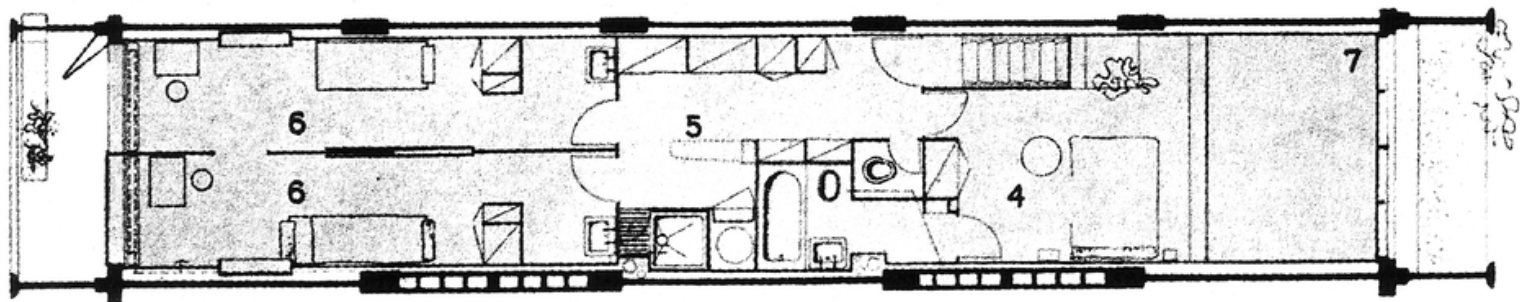
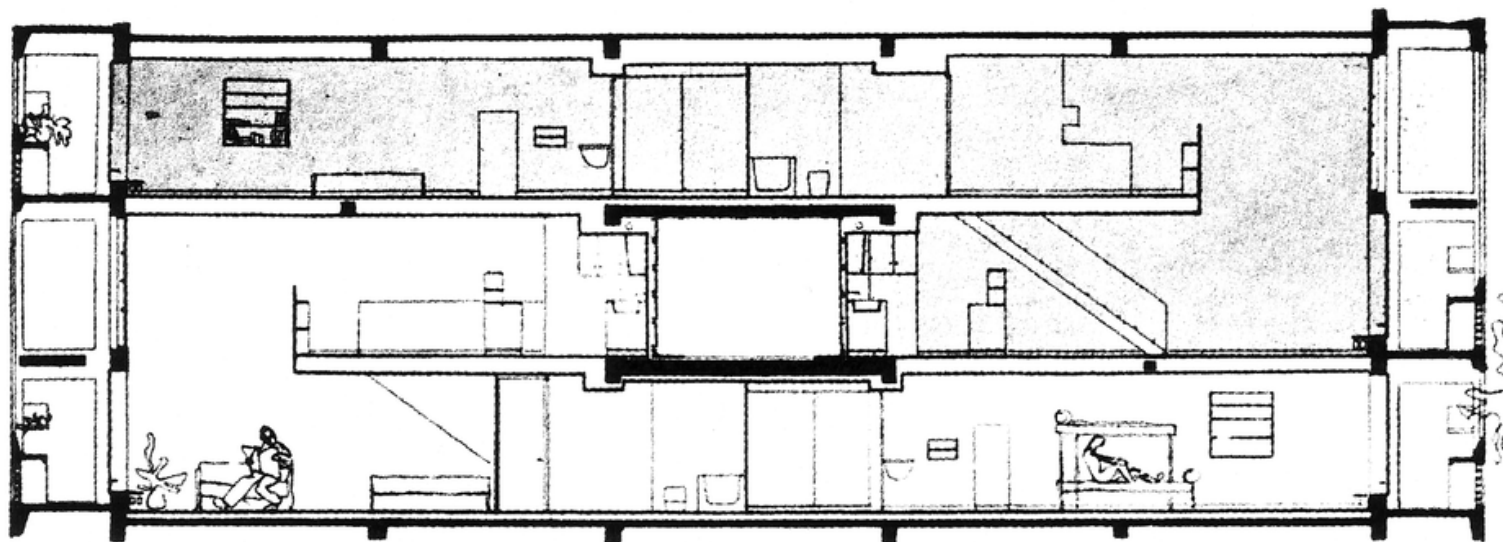


























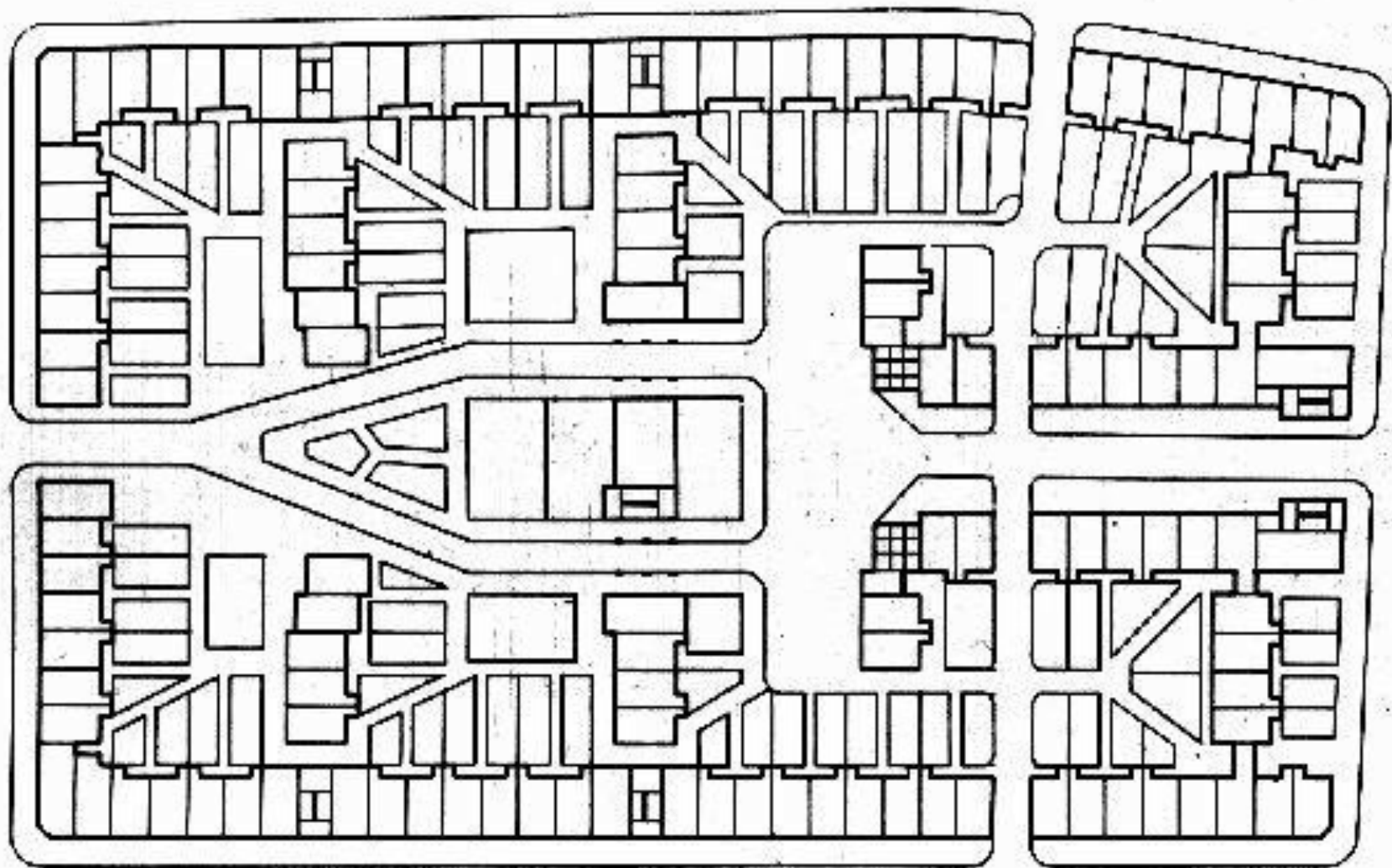


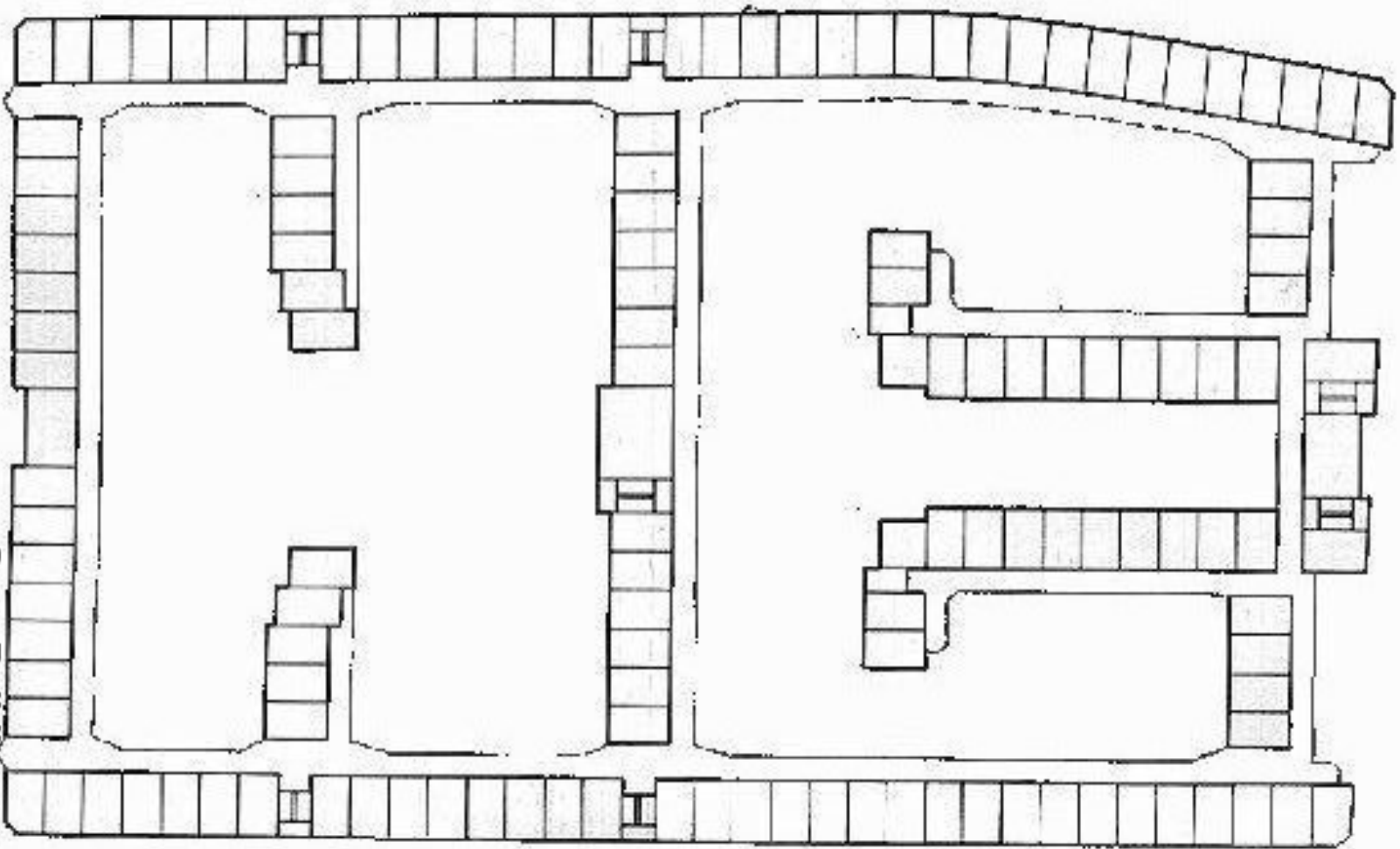


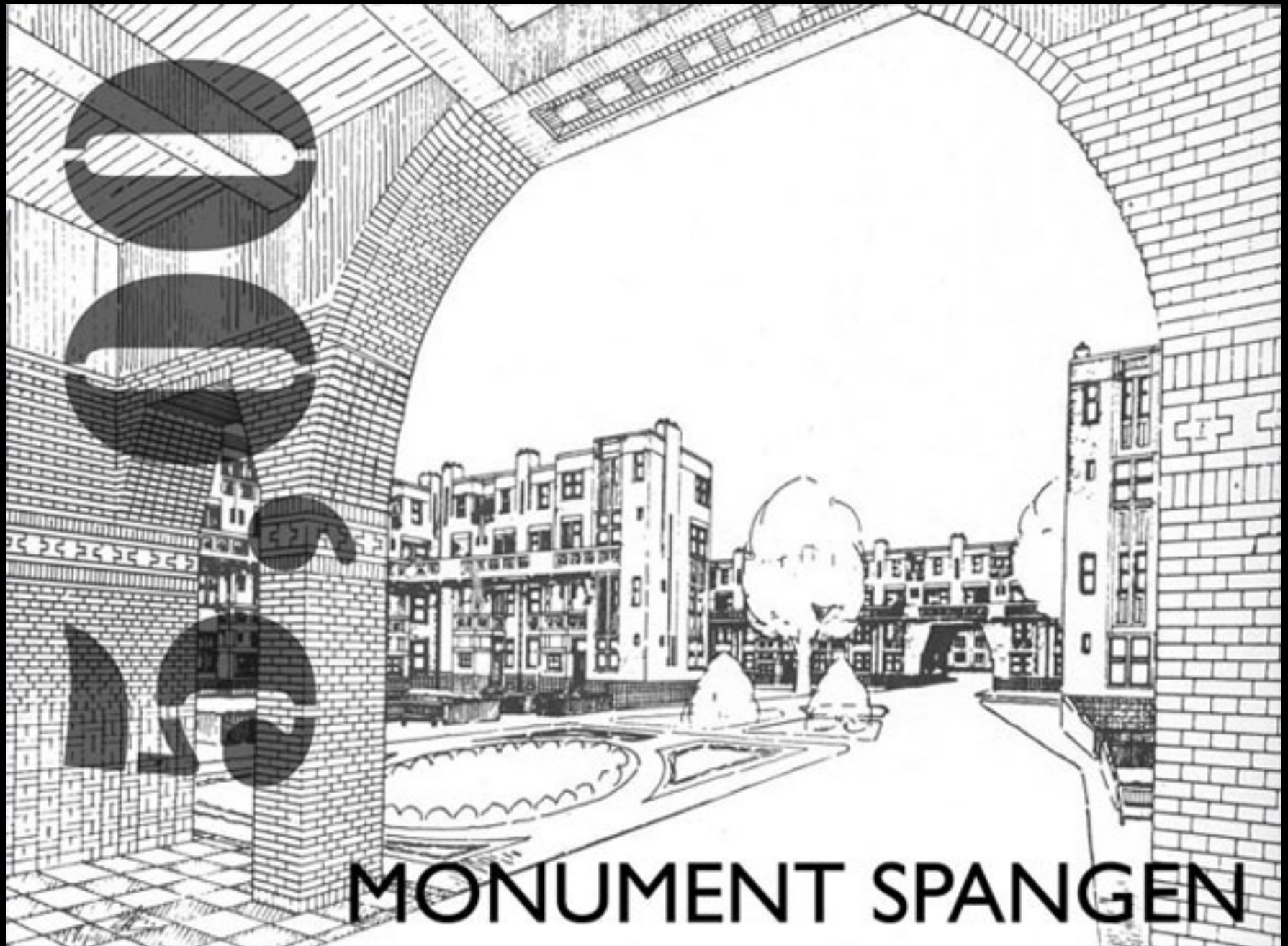










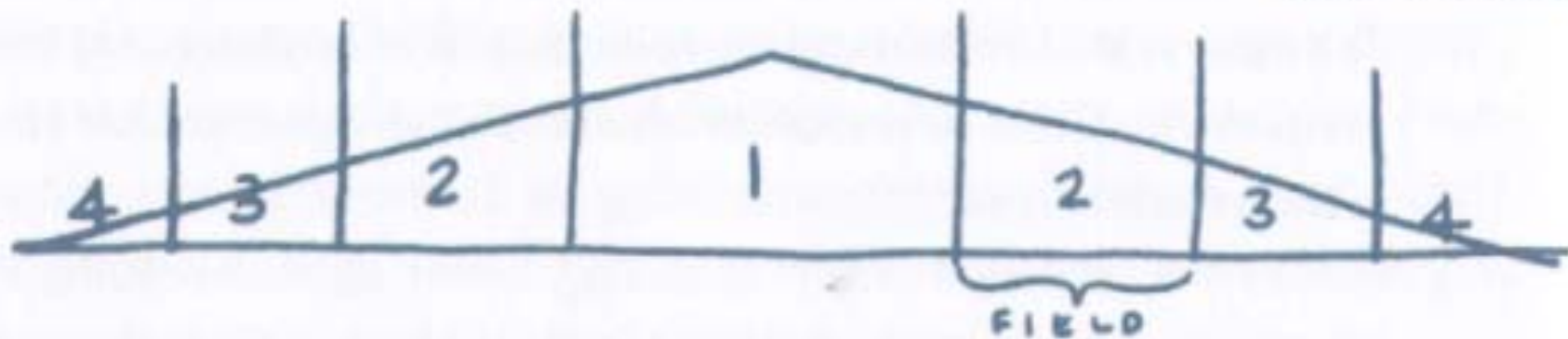


MONUMENT SPANGEN



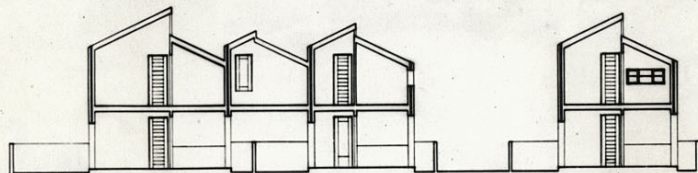
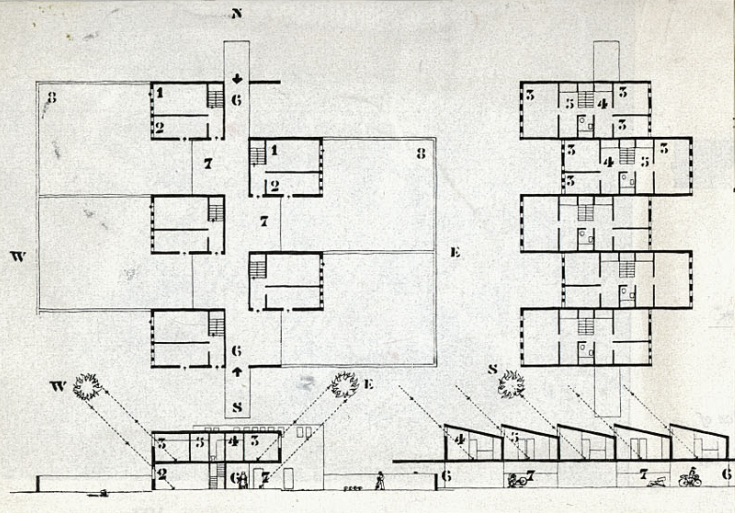


SCALE OF ASSOCIATION

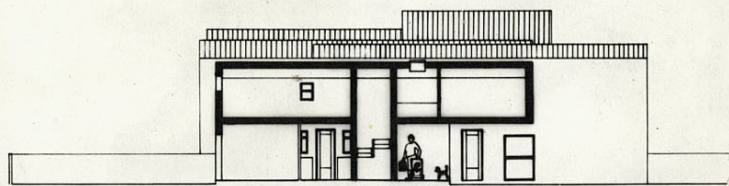


ACCOMMODATION PROVIDED:
 The houses cover a range
 of accommodation. Areas
 equivalent to 'Housing Manual'
 standards.

Cost: 41shillings per sq ft.

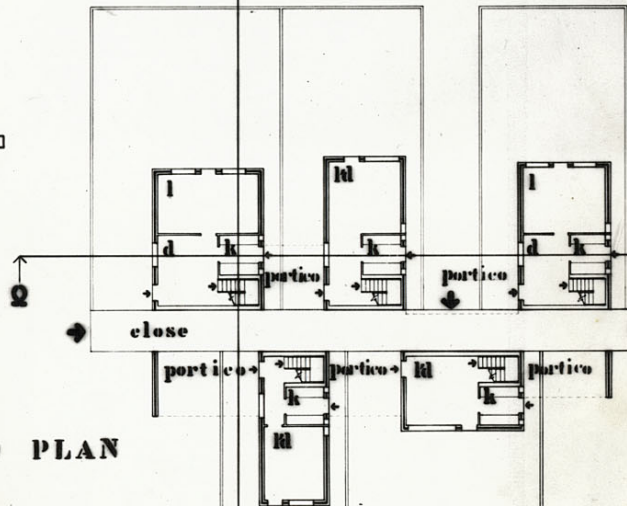
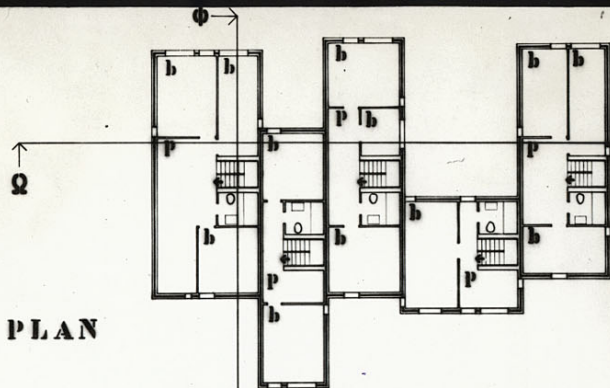


SECTION Q-Q



SECTION $\phi - \phi$

UPPER PLAN



GROUND PLAN



WEST ELEVATIO.

CONTRIBUTION TO AIM OF
CONGRESS.

Covered Close with access to
houses through Porticos off
it responds to new ways of
living.

Every house different to suit
individual requirements, yet
derived from same organisational
principle and from standard
element.

Split section lighting permits
new forms of internal planning
and new sorts of spaces.

Grouping of houses can take many
forms to suit location and densities.

Houses ride the landscape .

They open out to allow pieces of
usable country - in contrast to
the waste open space of the New
Towns.

Communal buildings are in the main
Core, the parking lot is the
only place of Local assembly.

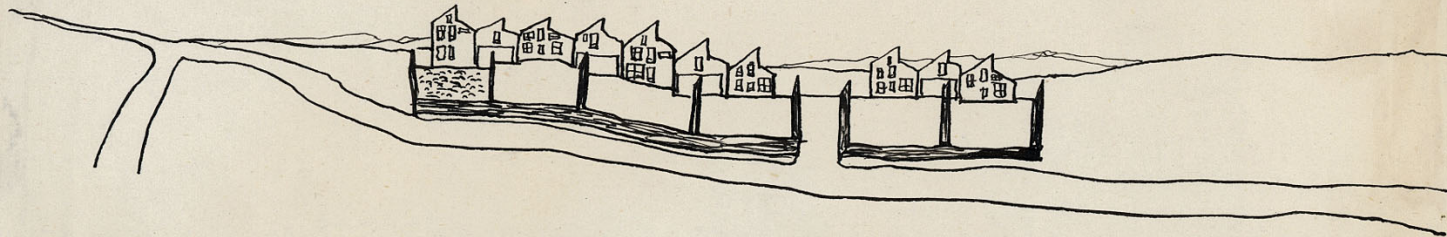


FIRST DRAWING OF IDEA. JULY '54

ENTRY TO CLOSE.



CLOSE DEVELOPMENT ON OPEN LANDSCAPE.



CONTRIBUTION TO AIM OF CONGRESS.

1/Plan Mass
Isolated curved block allows space to flow freely through the system and reduces the shadowed area.

2/Orientation.
All living accommodation faces the sun.

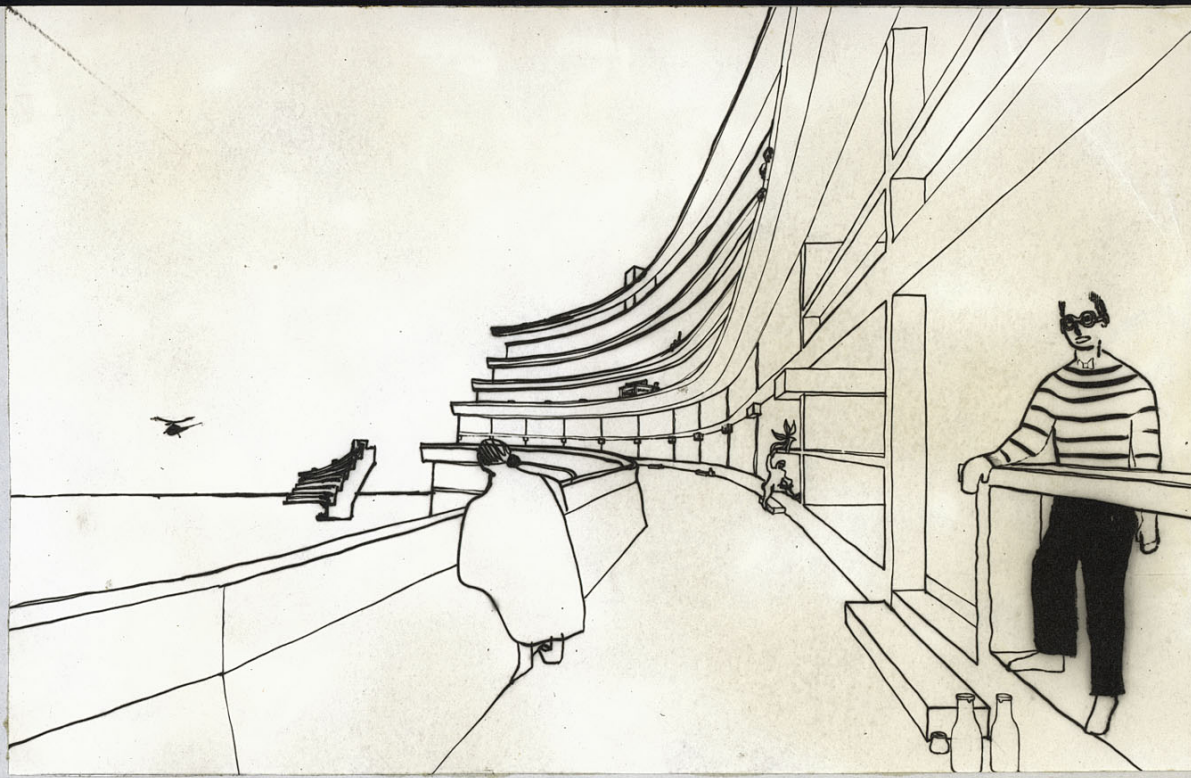
3/Immediate Extensions.
Living areas open on to porch and doorstep to terrace. Approximately 30 families to each terrace.

4/Identity.
Every house its own terrace. (no going down to a house) Height of block within vision range of ground.

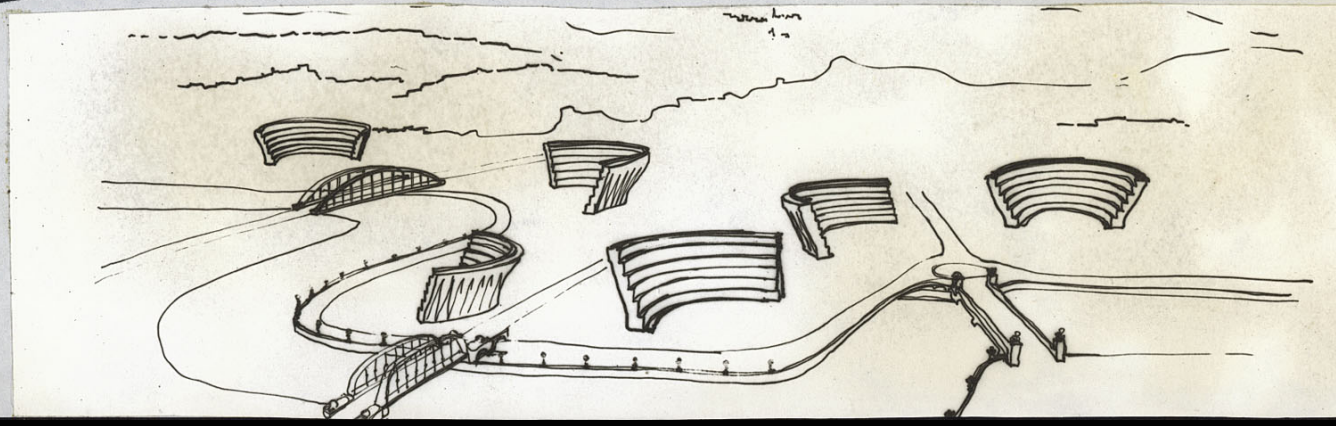
Aesthetics of structure identifies every house.

5/Variations.
House accommodation is in proportion to size of house. That is we do not merely add bedrooms to standard elements which confuses identity and is only geometrically convenient.

VIEW OF TERRACES →



↙ AERIAL VIEW OF BASIC UNITS ON SOUTH BANK OF THAMES.

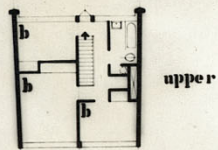


ACCOMMODATION PROVIDED: Middle Class Housing.
Various accommodation.

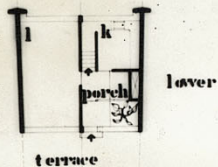
Cost: per dwelling £3:2:6 per sq ft.
or 7 shillings a cube ft. gross.

Comparative cost: Our CIAM 9 Grille 'Golden Lane' could have built for 4/6 per cube ft. gross.

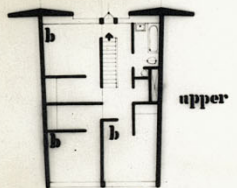
A similar scheme now building costs 6 shillings per cube ft.



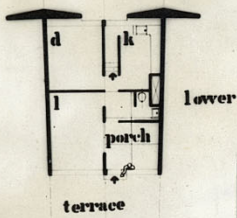
upper



lower



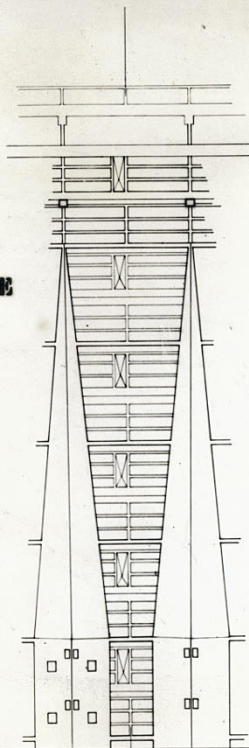
upper



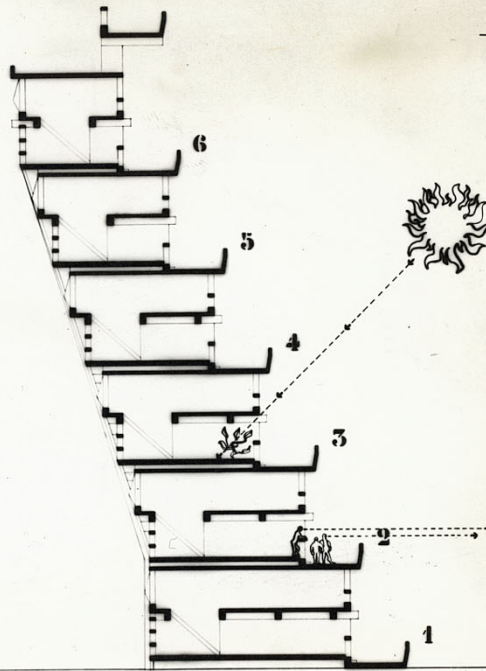
lower

PLANS AT
5th TERRACE

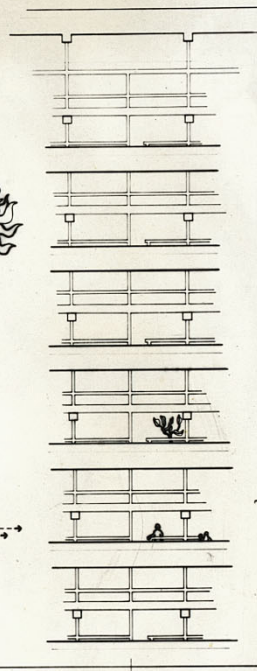
PLANS AT
2nd TERRACE



NORTH



SECTION



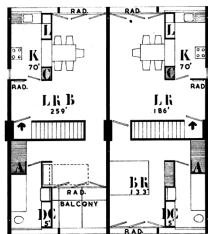
SOUTH

TYPICAL BANK OF HOUSES

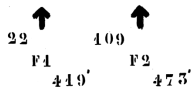
52
00



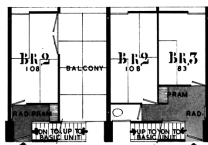
ABOVE DECK



BASIC UNITS
"PARENTS"

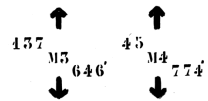


DECK

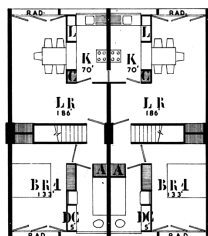


ADDITIONAL
BEDROOMS
CHILDREN

DECK



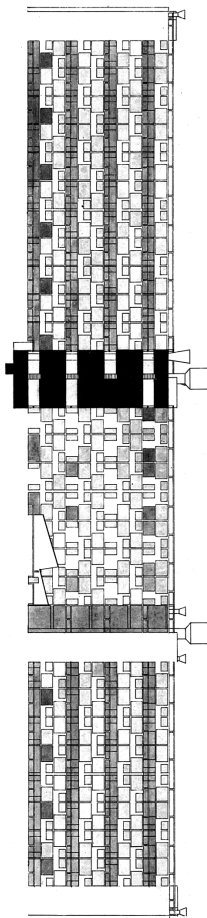
BELOW DECK
OR
ABOVE DECK



BASIC UNITS
"PARENTS"

NOTE: ALL DWELLINGS CONSIST OF A STANDARD BASIC UNIT WITH ADDITIONAL BEDROOMS AT DECK LEVEL AS REQUIRED.

GOLDEN LANE 1/8"

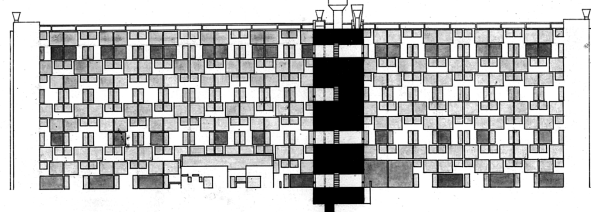
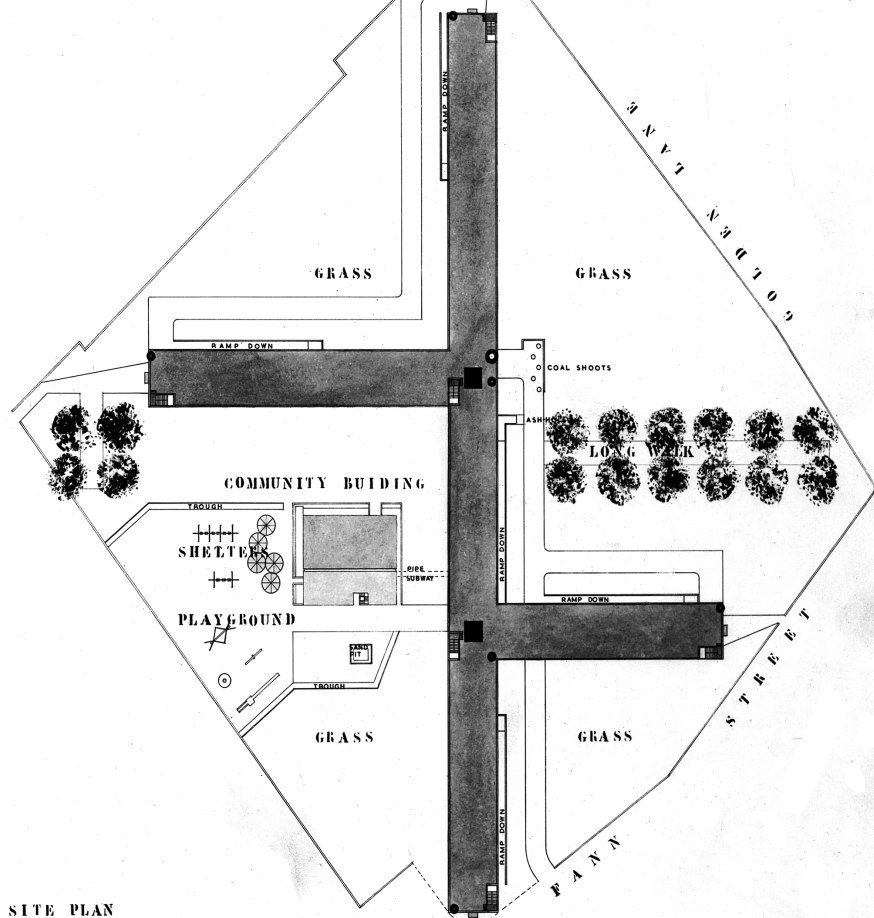


WEST ELEVATION

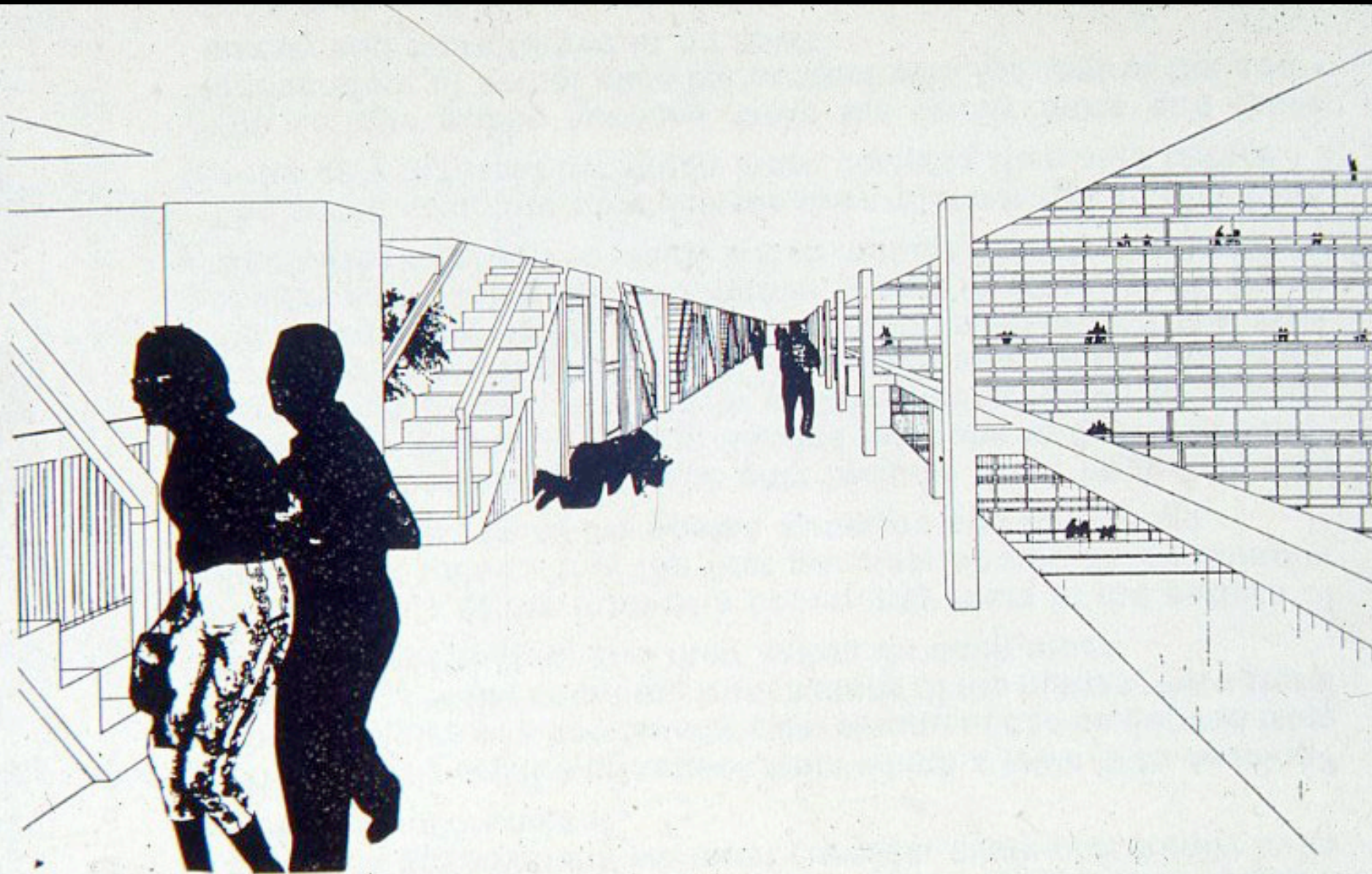
1/32"

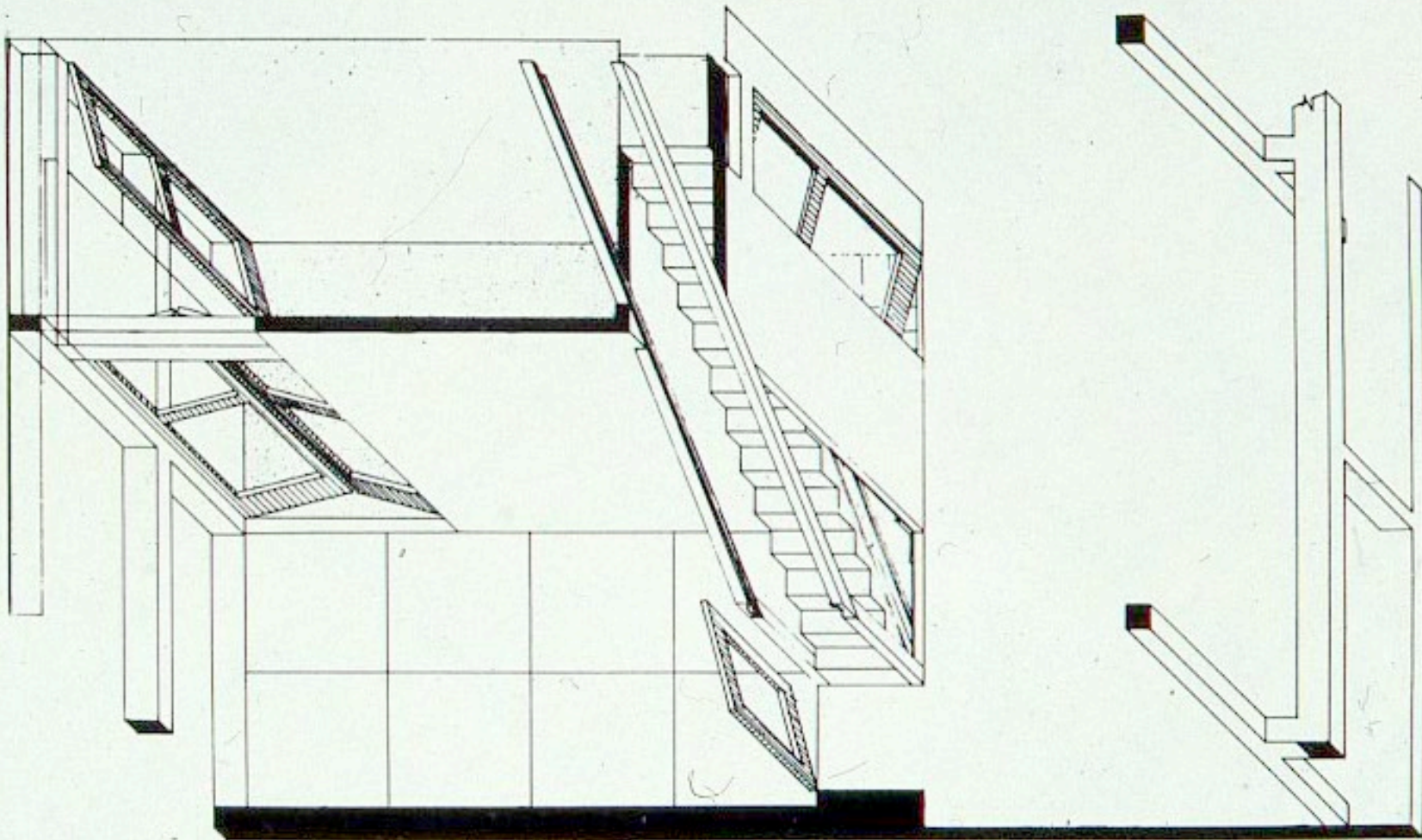
SOUTH ELEVATION

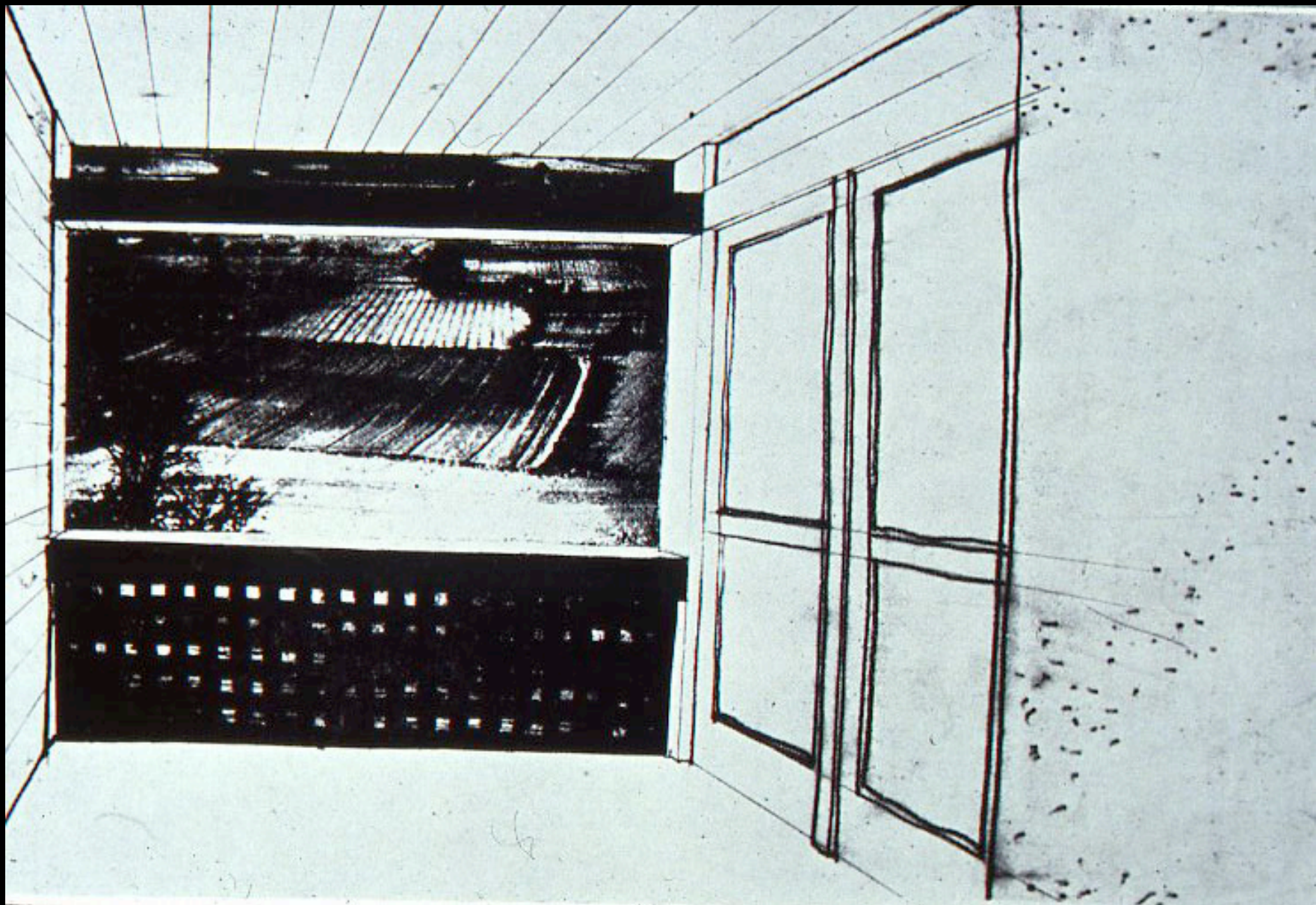
SITE PLAN



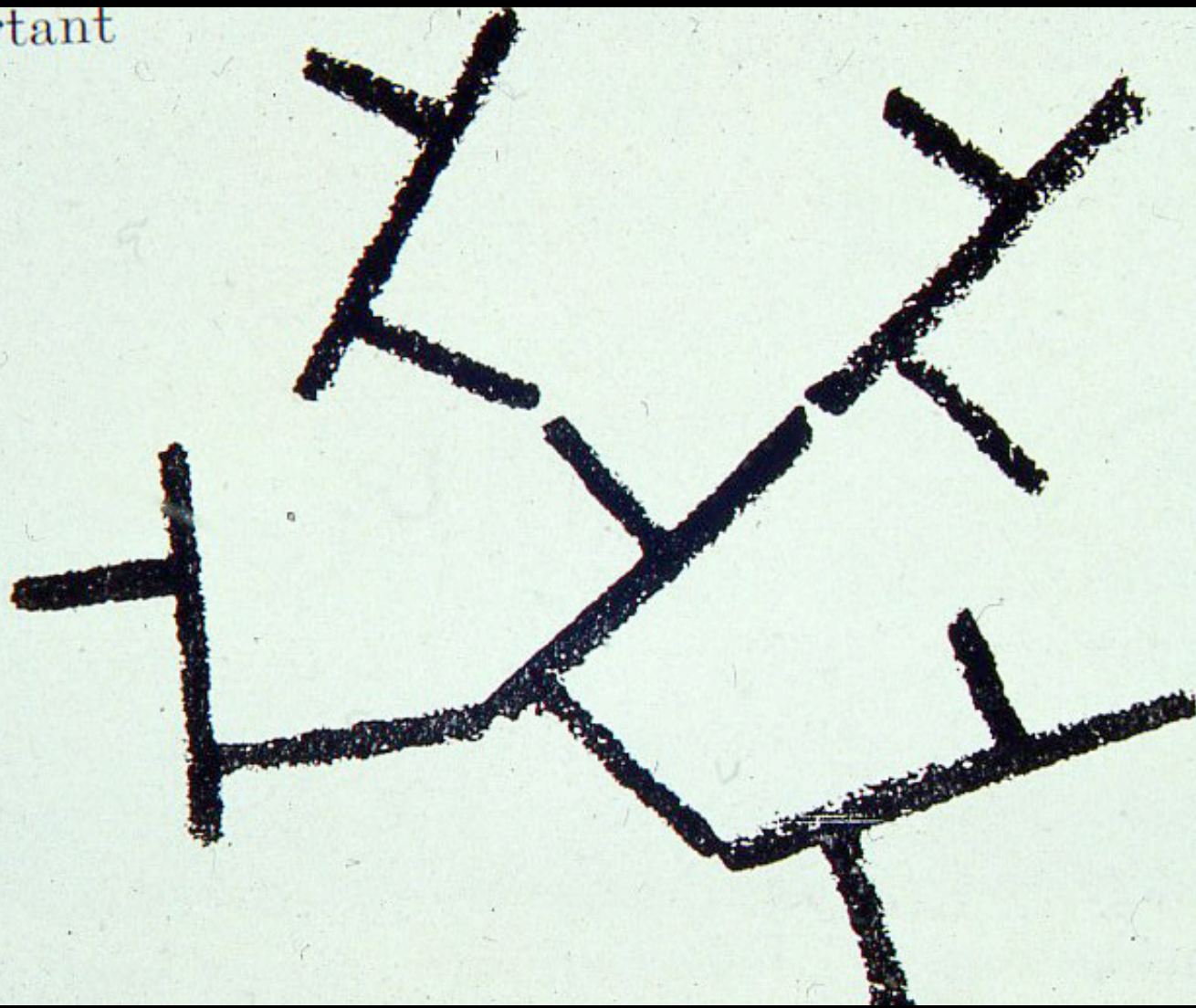


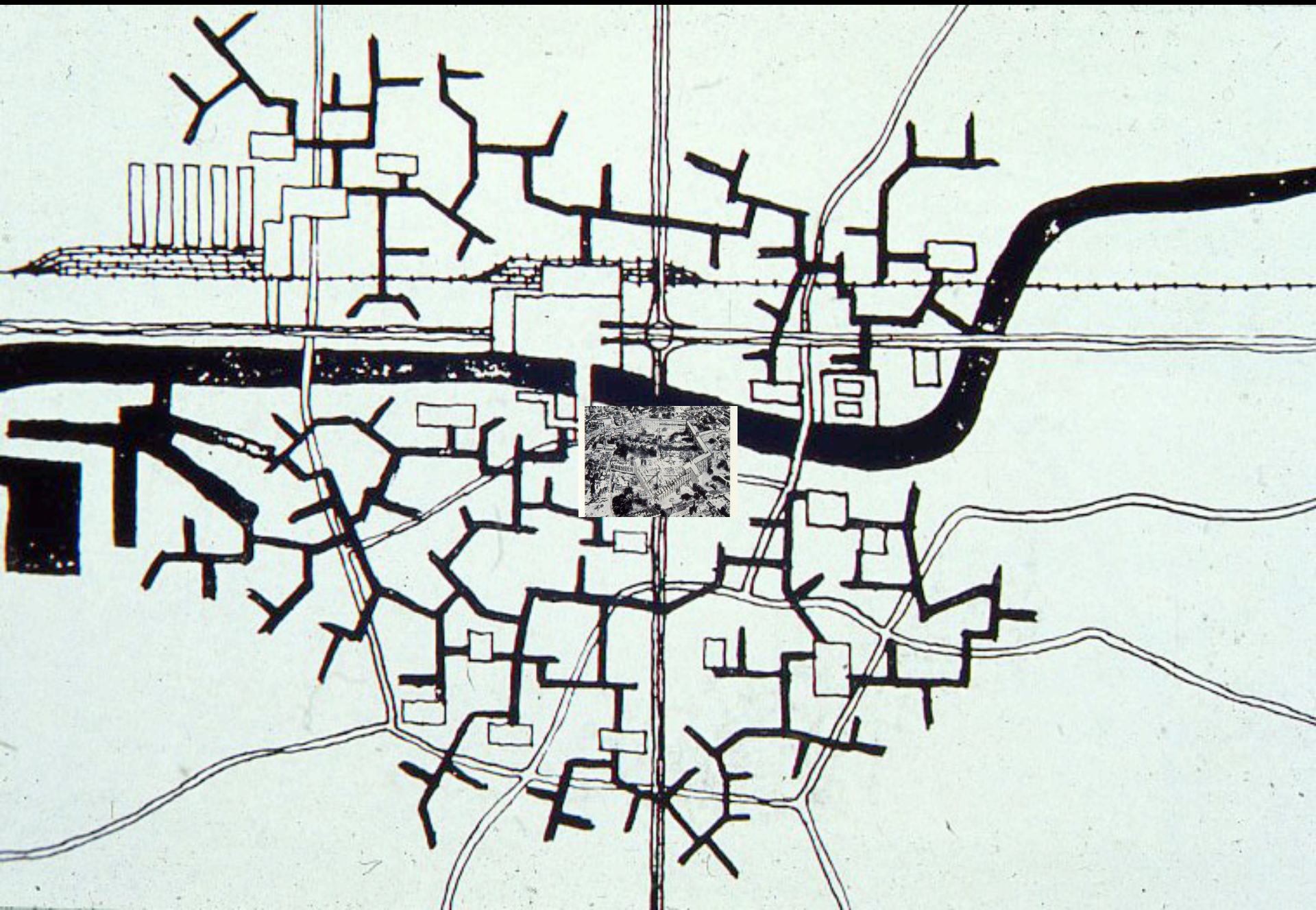


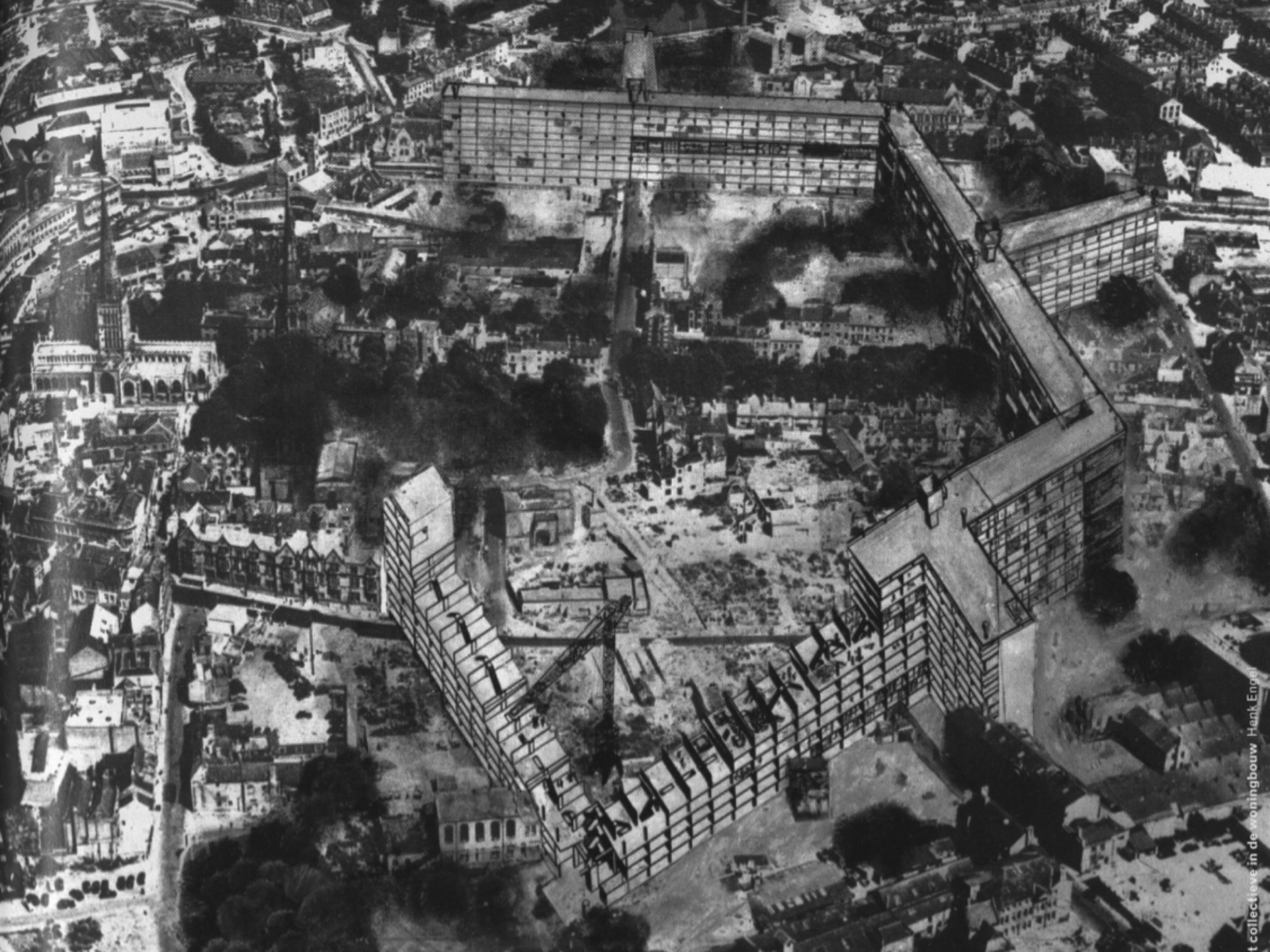




s important











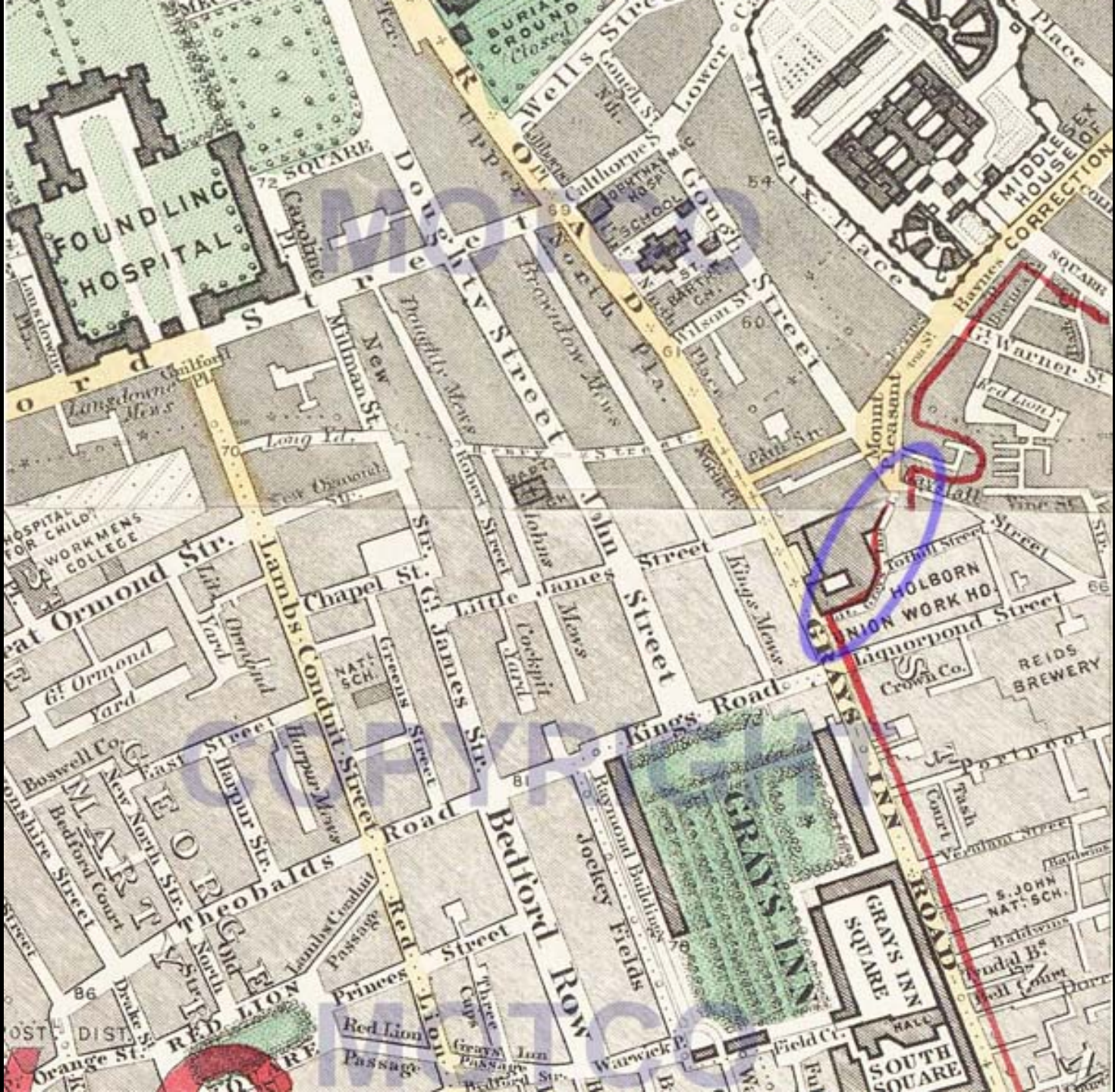


Table of References to the Maps with a the Traces

1. ...
2. ...
3. ...
4. ...
5. ...
6. ...
7. ...
8. ...
9. ...
10. ...
11. ...
12. ...
13. ...
14. ...
15. ...
16. ...
17. ...
18. ...
19. ...
20. ...
21. ...
22. ...
23. ...
24. ...
25. ...
26. ...
27. ...
28. ...
29. ...
30. ...
31. ...
32. ...
33. ...
34. ...
35. ...
36. ...
37. ...
38. ...
39. ...
40. ...
41. ...
42. ...
43. ...
44. ...
45. ...
46. ...
47. ...
48. ...
49. ...
50. ...
51. ...
52. ...
53. ...
54. ...
55. ...
56. ...
57. ...
58. ...
59. ...
60. ...
61. ...
62. ...
63. ...
64. ...
65. ...
66. ...
67. ...
68. ...
69. ...
70. ...
71. ...
72. ...
73. ...
74. ...
75. ...
76. ...
77. ...
78. ...
79. ...
80. ...
81. ...
82. ...
83. ...
84. ...
85. ...
86. ...
87. ...
88. ...
89. ...
90. ...
91. ...
92. ...
93. ...
94. ...
95. ...
96. ...
97. ...
98. ...
99. ...
100. ...

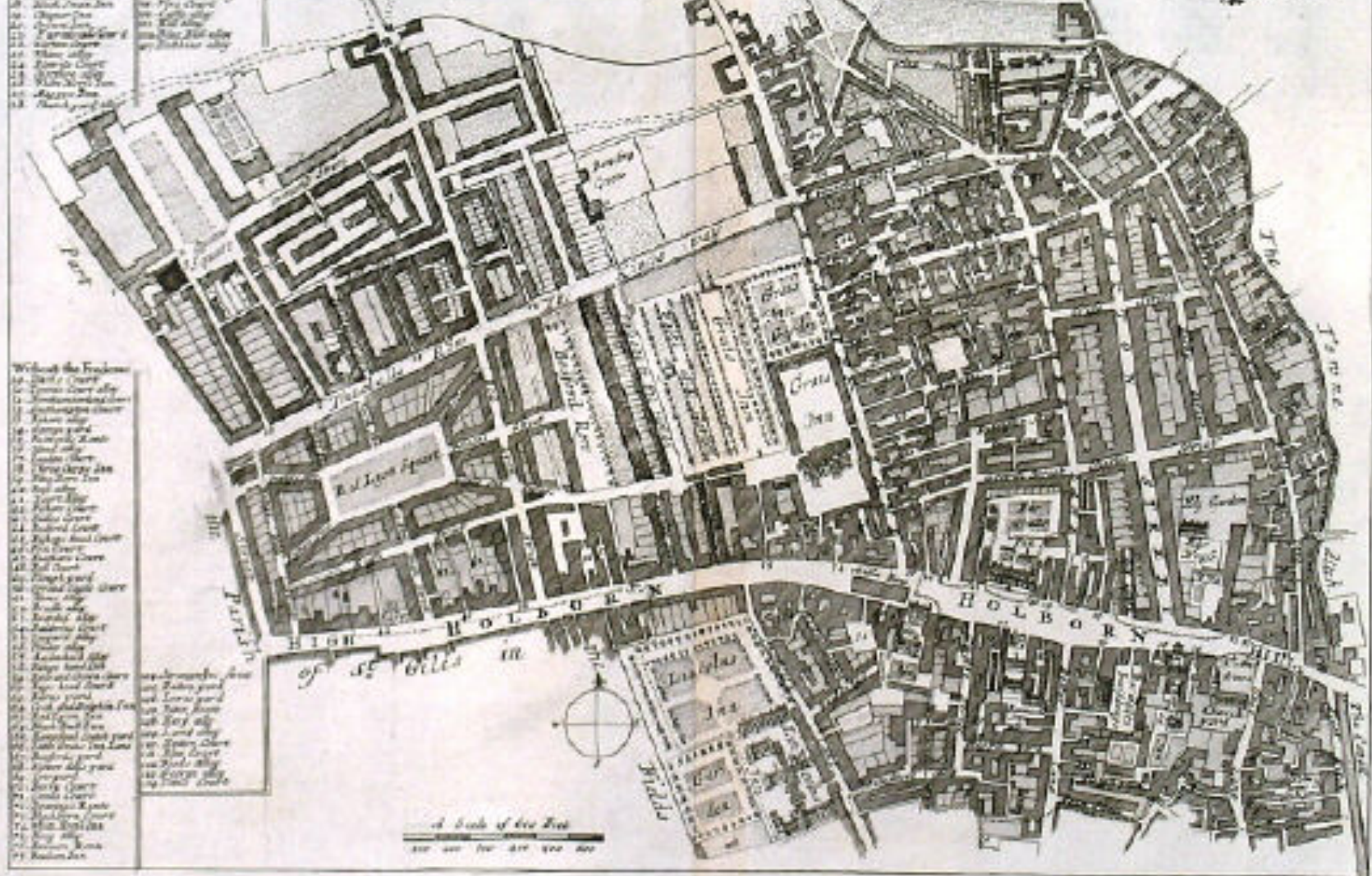
References to the New Buildings

1. Southampton Court	15. Rich. St. Court
2. Little Bedford Street	16. Green Lane
3. St. George's Chapel	17. Green Lane
4. Paul's Alley	18. Bedford Court
5. Lamb Court	19. Duckhall Court
6. Court of the King	20. Green Lane
7. Court of the Queen	21. Duckhall Court
8. Little Bedford Street	22. Green Lane
9. Paul's Alley	23. Duckhall Court

A Map of S. ANDREW'S HOLBORN Parish.
as well within the Liberty as without
taken from the last Survey, with
Corrections and Additions

Without the Traces

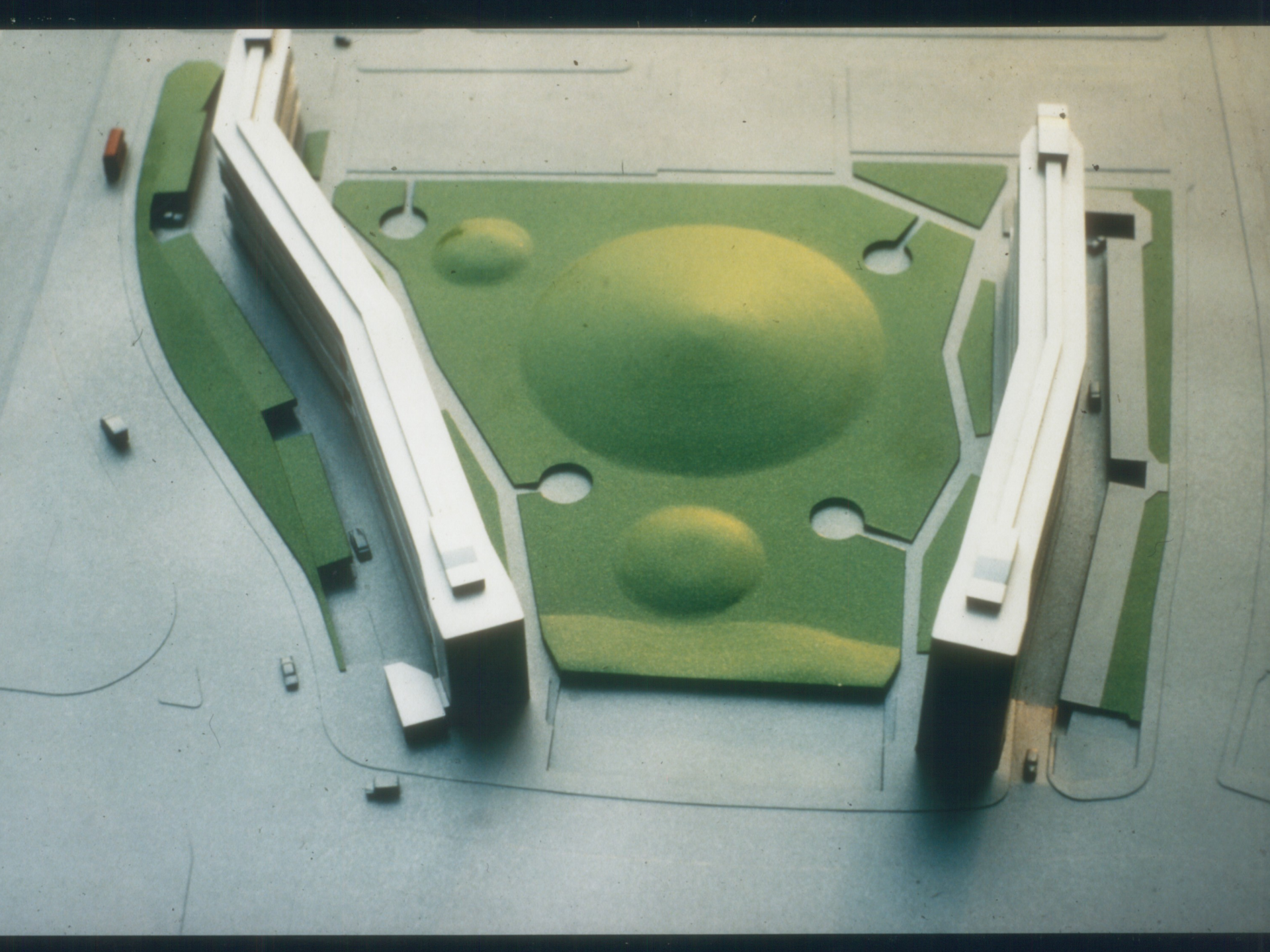
1. ...
2. ...
3. ...
4. ...
5. ...
6. ...
7. ...
8. ...
9. ...
10. ...
11. ...
12. ...
13. ...
14. ...
15. ...
16. ...
17. ...
18. ...
19. ...
20. ...
21. ...
22. ...
23. ...
24. ...
25. ...
26. ...
27. ...
28. ...
29. ...
30. ...
31. ...
32. ...
33. ...
34. ...
35. ...
36. ...
37. ...
38. ...
39. ...
40. ...
41. ...
42. ...
43. ...
44. ...
45. ...
46. ...
47. ...
48. ...
49. ...
50. ...
51. ...
52. ...
53. ...
54. ...
55. ...
56. ...
57. ...
58. ...
59. ...
60. ...
61. ...
62. ...
63. ...
64. ...
65. ...
66. ...
67. ...
68. ...
69. ...
70. ...
71. ...
72. ...
73. ...
74. ...
75. ...
76. ...
77. ...
78. ...
79. ...
80. ...
81. ...
82. ...
83. ...
84. ...
85. ...
86. ...
87. ...
88. ...
89. ...
90. ...
91. ...
92. ...
93. ...
94. ...
95. ...
96. ...
97. ...
98. ...
99. ...
100. ...

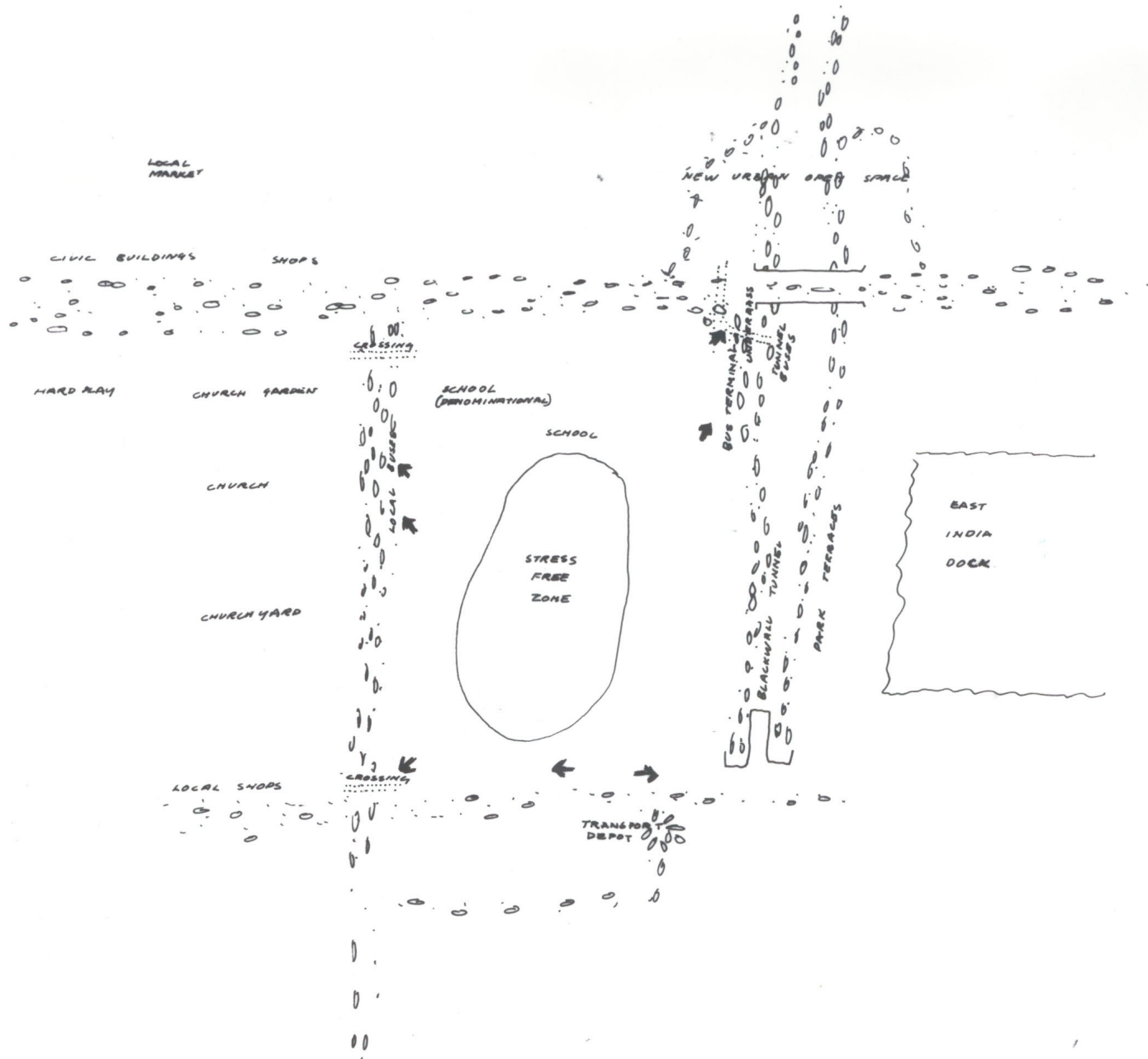




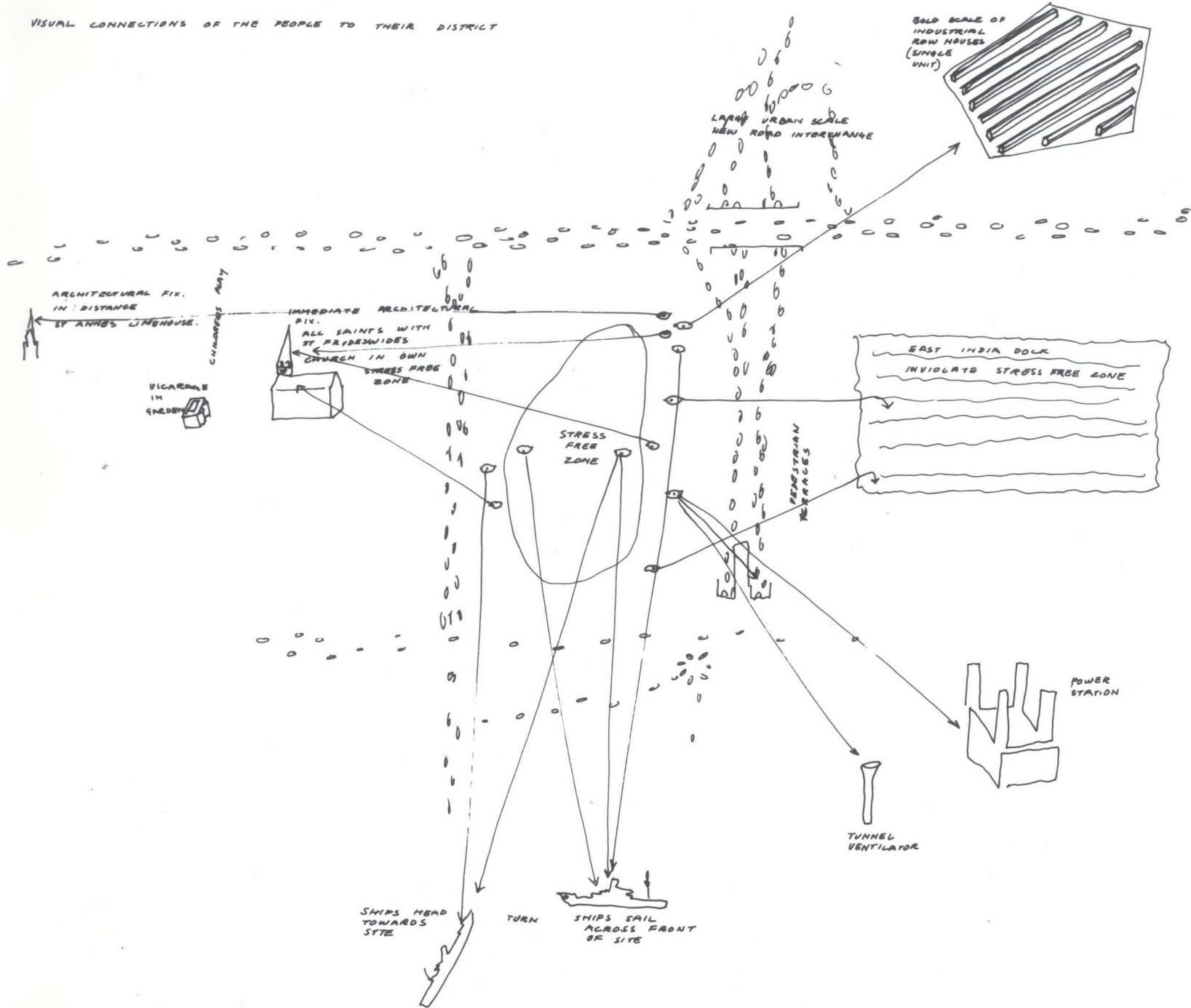


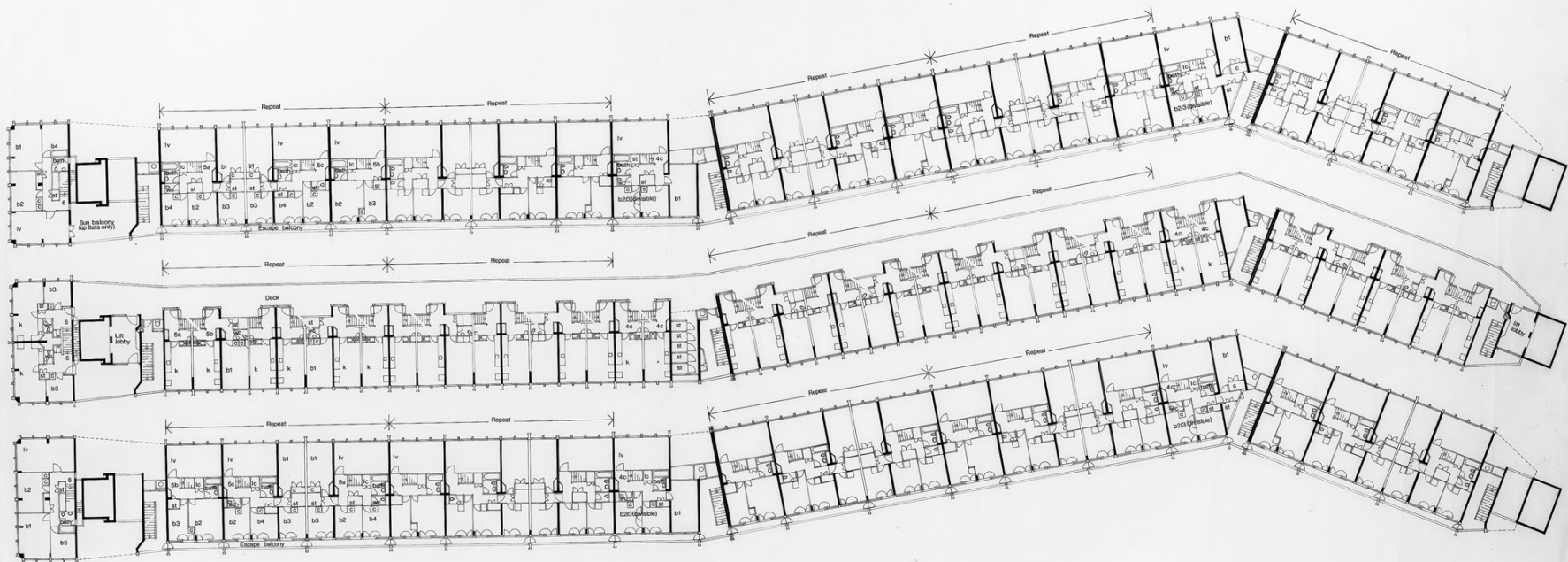




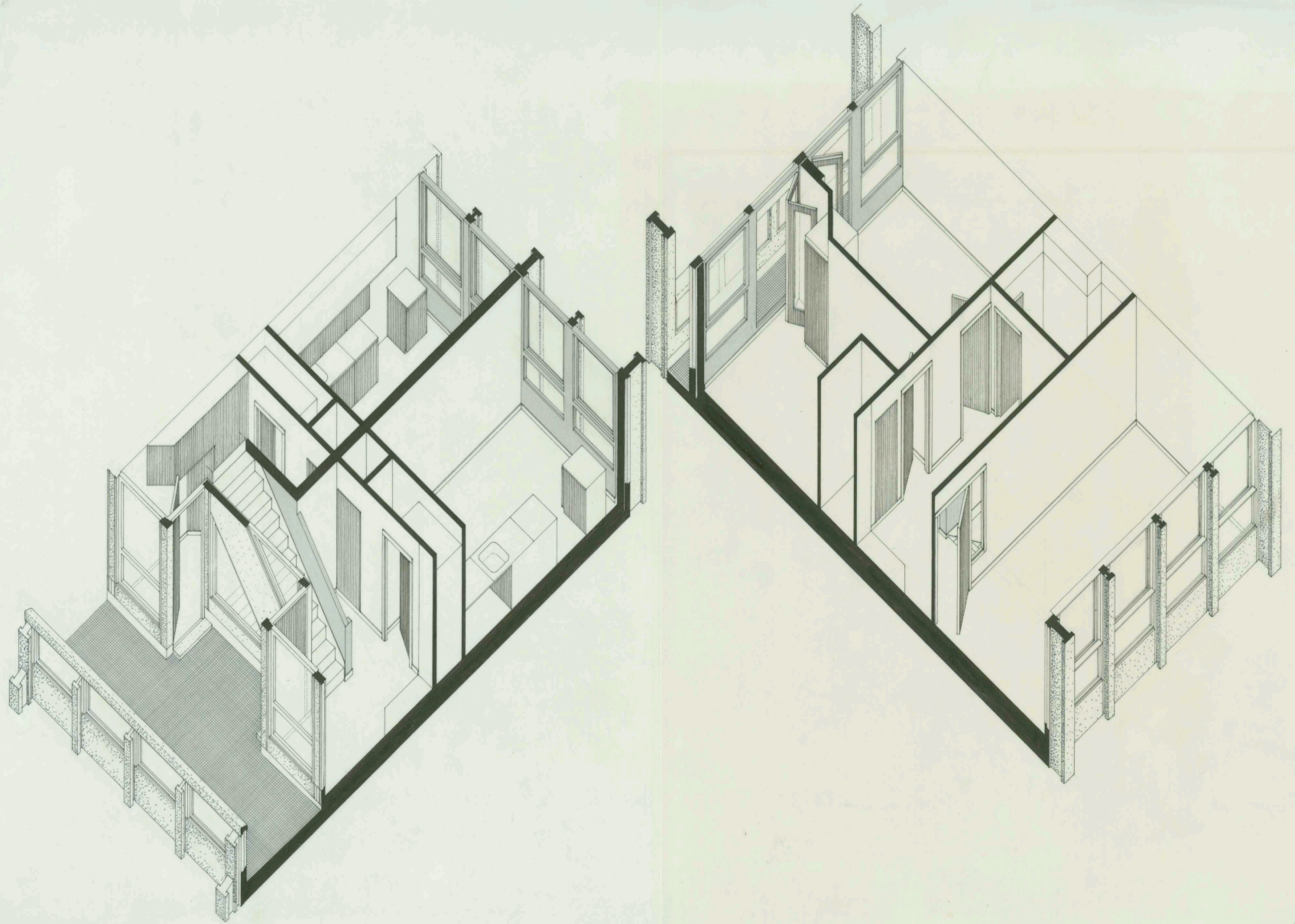


VISUAL CONNECTIONS OF THE PEOPLE TO THEIR DISTRICT

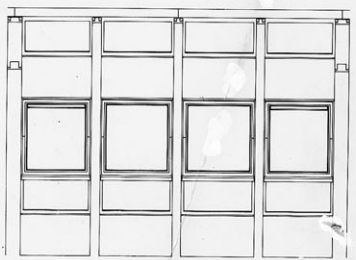
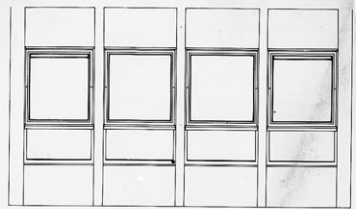




0 5 10 15 20 FT.
 ■■■■■■■■■■



230mm



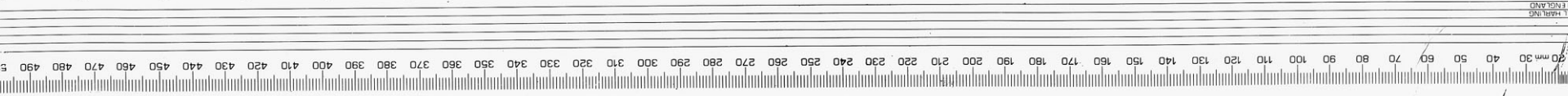
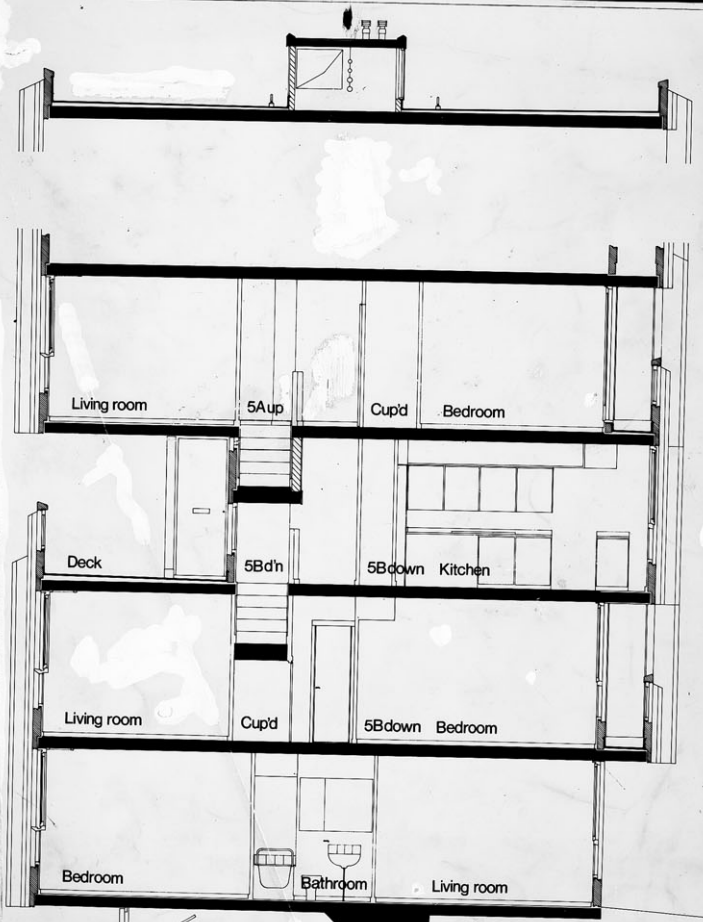
Precast acoustic wall

Pavement

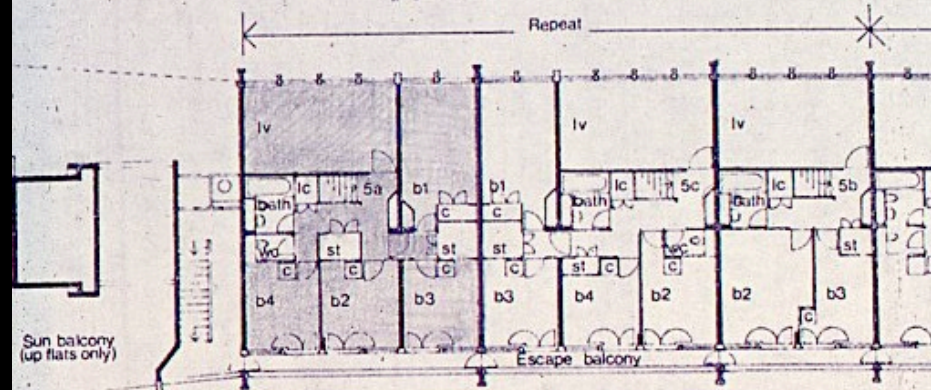
Grass

Garage

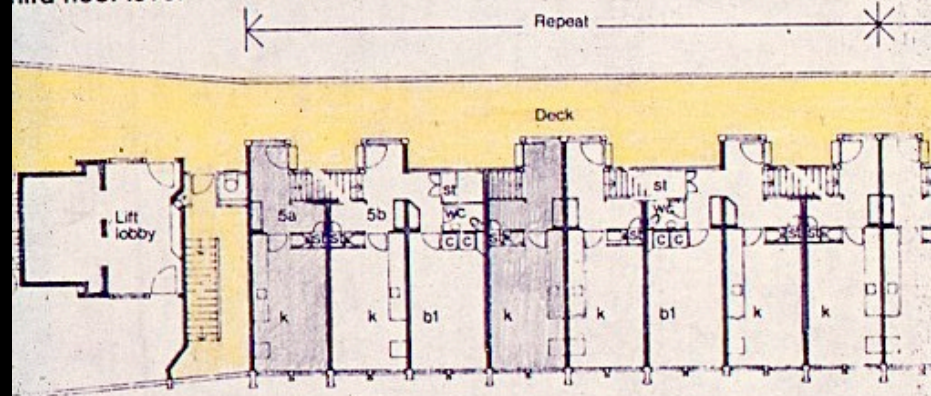
Service road



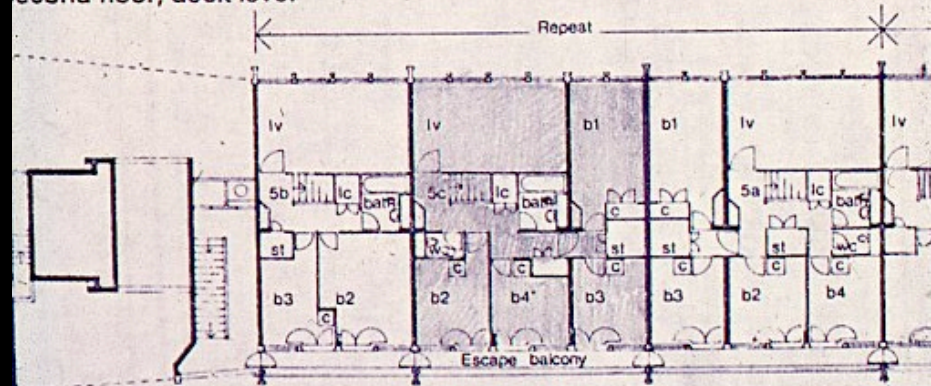
1:1000



Third floor level



Second floor, deck level



First floor level

Bottom Street building. Blacked-in walls and stairs must be regarded as 'per'







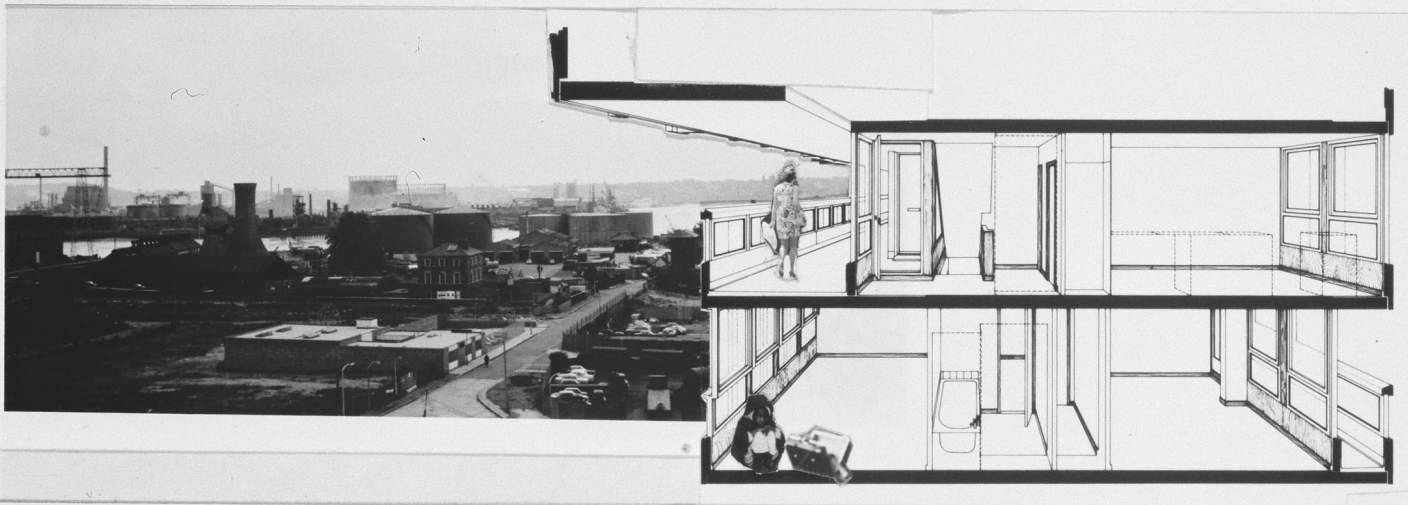
ALISON AND PETER SMITHSON
Cato Lodge,
24, Gilston Road,
London, SW10 9 R.
01-373 7423/3333

(B)

MAKE AS ONE WITH

(A) (C) + (D)

PLEASE RETURN



10
117

(81)

LINE 9 TON

ROBIN HOOD GARDENS, BLACKWALL TUNNEL SOUTH BLOCK, 9th FLOOR,
OUTSIDE FLAT 210 (TYPE 4B), LOOKING SOUTH. COLLAGE BY PS. 11/7:72











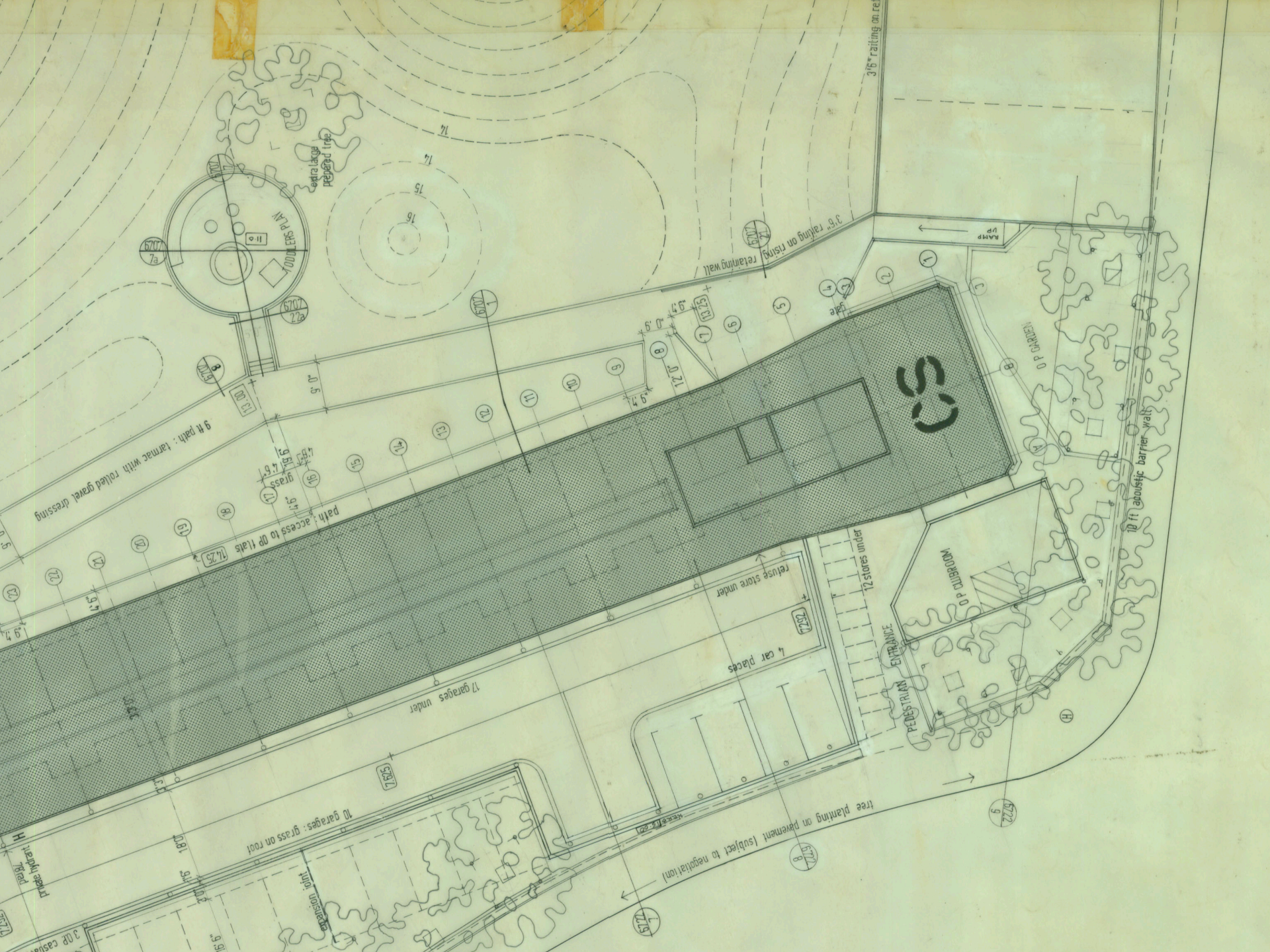












9 ft path: tarmac with rolled gravel dressing

path access to OP flats

17 garages under

4 car places

refuse store under

12 stores under

PEDESTRIAN ENTRANCE

AUDITORIUM

10 ft acoustic barrier wall

tree planting on pavement (subject to negotiation)

CS

RAMP UP

3/6" raking on rising retaining wall

3/6" raking on re...

3.02 carport

truck area

10 garages: grass on roof

vegetation strip

3.61

1.87

5.91

3.71

7.25

3.61

4.61

3.61

10.5

1.65

5.00

11

10

6

8

1

6

5

4

7

1

3

2

4

5

6

7

8

9

67.07

67.07

67.07

67.07

67.07

67.07

67.07

67.07

67.07

67.07

67.07

67.07

67.07

67.07

67.07

67.07

67.07

67.07

67.07

67.07

67.07

67.07

67.07

67.07

67.07

67.07

67.07

67.07

67.07

67.07

67.07

67.07

67.07

67.07

67.07

67.07

67.07

67.07

67.07

67.07

67.07

67.07

67.07

67.07

67.07

67.07































