

## I N T E R I O R S

Culture of interiors has been often forced to coincide with the architecture history or with the furniture one, misunderstanding that the specificity of inner-space is shared among both of them. My work aims to contribute to the definition of the discipline of interiors and proposes an interpretation of its specific character, establishing and grounding its ethic and methodology of design, by discussing some topic issues. Main focus has been addressed to those human inhabiting activities, like relations between objects, their use and space, which are basic for the creation of the meaning of places and therefore central in a so called 'interior design approach'. The centrality of the subject[ive] experience is relevant (both in the teaching strategy and in the professional practice) because it becomes the parameter to design uses and shapes and determinates those cultural meanings where objects can be properly set. The interiors approach in fact, stresses the importance of these cultural relations between objects and context as possibility of really using and understanding the places, and therefore to design or re-design them, like in the intervention on the existent.

## H U M A N D I M E N S I O N

a fundamental parameter to recognize whatever project as characterized by an approach within the field of Interiors is the evidence of human presence in the design process. Not only in terms of human scale metrics, from the use of inches and foot to more sophisticated golden section and so on, but in terms of the project to be capable to show existing relationships between space, that we prefer to call "place", gesture use and meaning.

## S E L F - D I M E N S I O N

This also explains why, working with Interiors at school, the self-dimension is often called in evidence: the reflexive action of involving "yourself" in the design process is almost the only strategy both to avoid extreme generalization and to give depth of meaning to design choices.

## A C T I O N S & P L A C E

Shape and gesture in the interior are strictly connected and this topic represents the basic specificity of interior culture. Therefore, Interiors represent, rather than an operative field in itself, an approach to design, focused on the relevance of gesture, considered as the action building-the-place.

## O B J E C T S & F U R N I T U R E

The character and the quality of an ambient is defined by the system of objects and of actions this system can give rise to: they construct precise settings, suggest models and lifestyles, support cultural endeavors.

## T H E E X I S T E N T

The practice of interiors, in this view, is addressed and suitable both to new design and to intervention on/around existent since it takes care of relationship between gesture and space, with the help of objects. However, "working on the existing" is paradigmatic for the discipline: the already existing constructions are the place where space has to be thought around the subject, where new gestures need to "find home".

## H O S P I T A L I T Y

It is the place where hospitality investigation between actions and shapes are more deeply developed because of the reduced freedom connected with the existing boundaries.

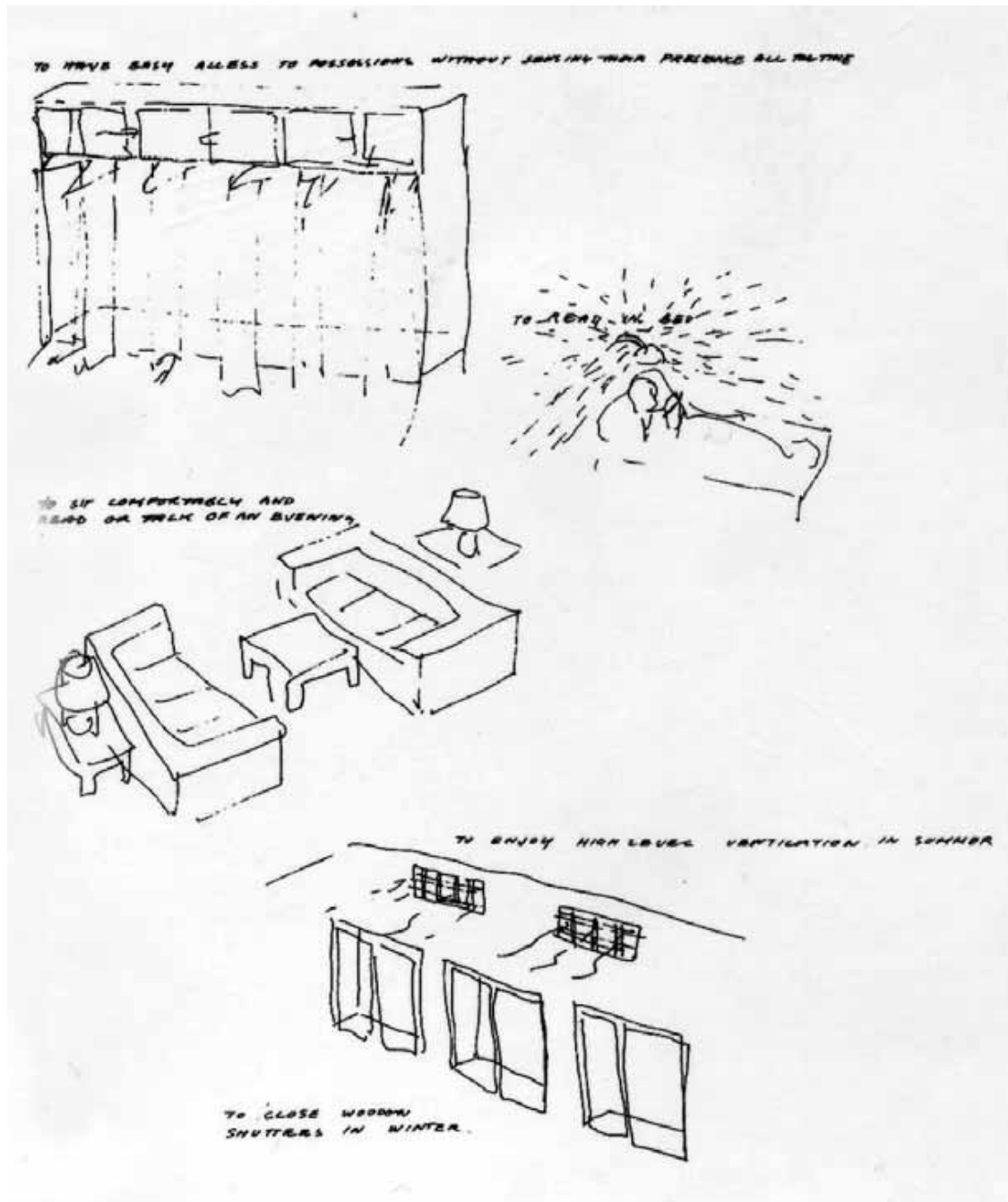
# INTERIORS



architettura & abitare: HUMAN DIMENSION

place-gesture-use-meaning  
 a fundamental parameter to recognize whatever project as characterized by an approach within the field of Interiors is the evidence of human presence in the design process. Not only in terms of human scale metrics, from the use of inches and foot to more sophisticated golden section and so on, but in terms of the project to be capable to show existing relationships between space, that we prefer to call "place", gesture use and meaning

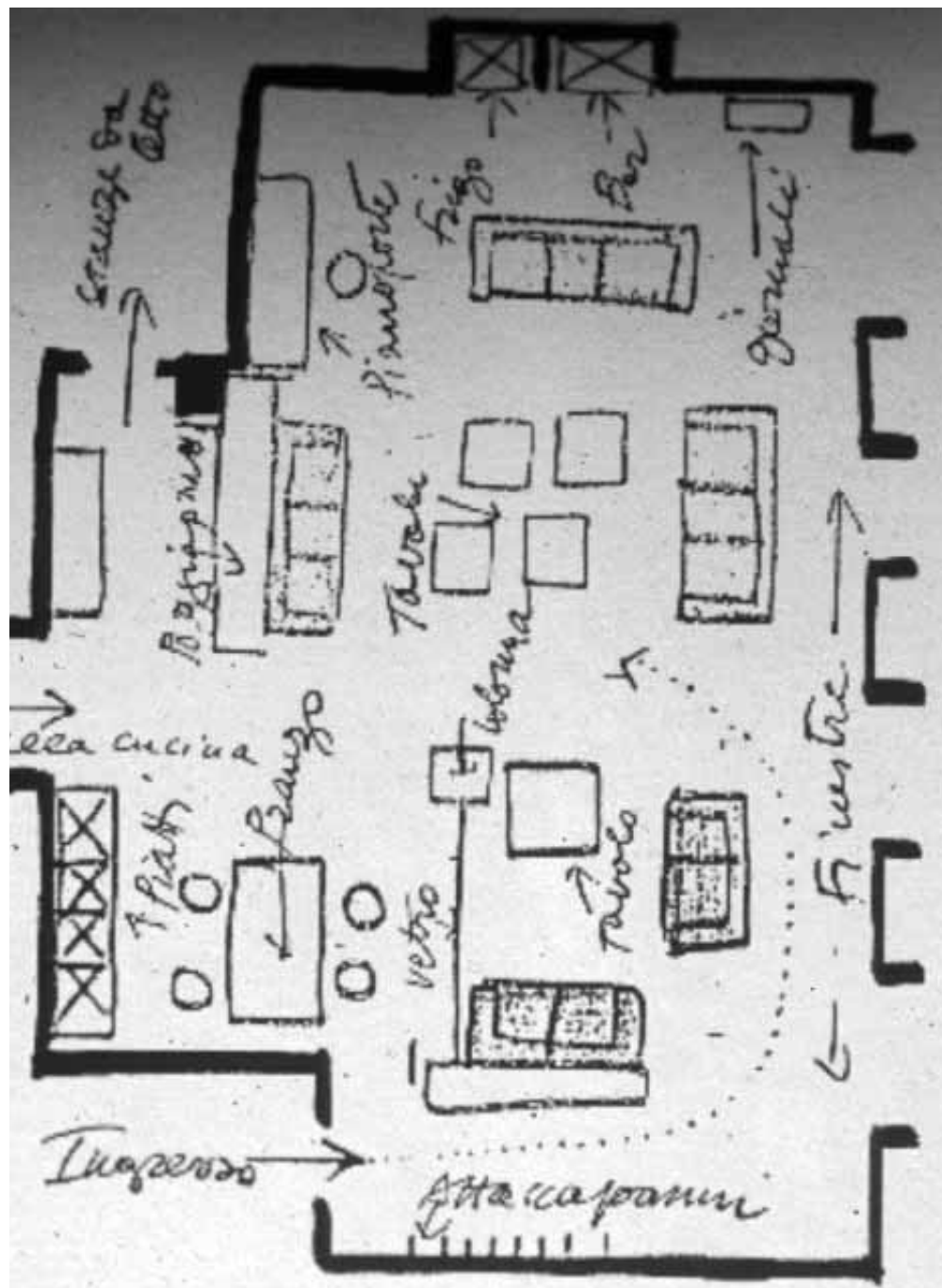
Giotto, l'annuncio ad Anna, 1303-04



AMBIENT-azioni

Shape and gesture in the interior are strictly connected and this topic represents the basic specificity of interior culture. Therefore, Interiors represent, rather than an operative field in itself, an approach to design, focused on the relevance of gesture, considered as the action-building-the-place.

A&P Smithson, Small pleasure of life, in Changing the art of inhabitation, 1993



## FURNITURE

presence&role of objects

The character and the quality of an ambient is defined by the system of objects and of actions this system can give rise to: they construct precise settings, suggest models and lifestyles, support cultural endeavours.

Ettore Sottsass, schizzo di arredo, 1972

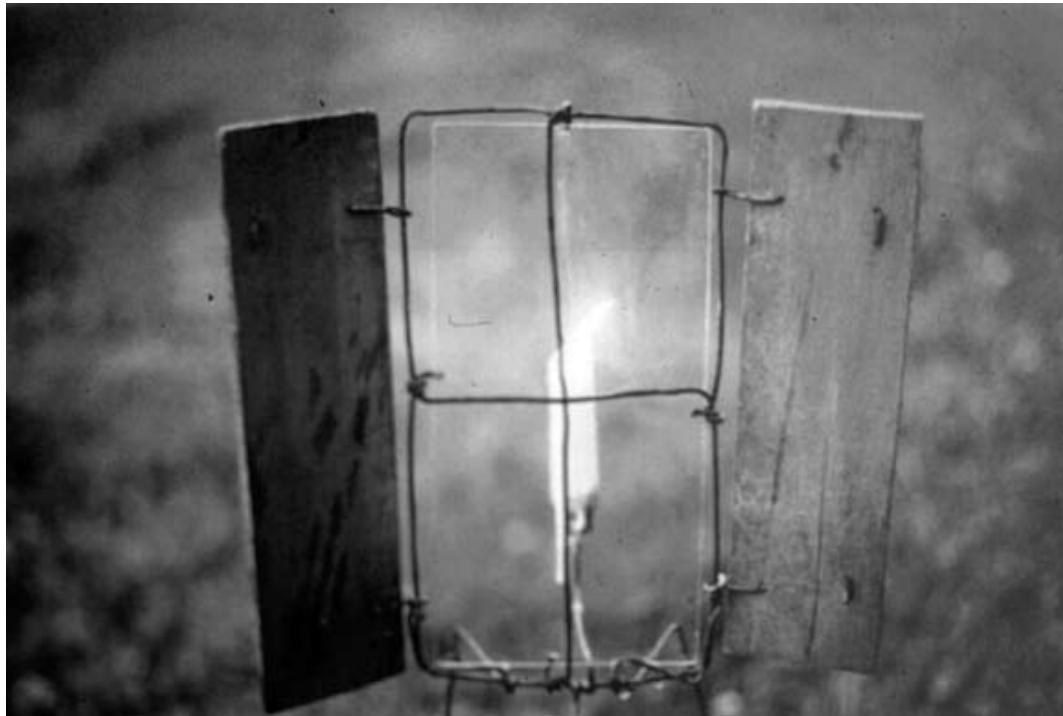


## THE PARADIGM OF THE EXISTENT

interior/into-something  
the querelle of the origin[al]  
the querelle of the tradition[al]

The practice of interiors, in this view, is addressed and suitable both to new design and to intervention on/around existent since it takes care of relationship between gesture and space, with the help of objects. However, "working on the existing" is paradigmatic for the discipline: the already existing constructions are the place where space has to be thought around the subject, where new gestures need to "find home".

LC, Bestegui apartment, Paris 1929-31



## HOSPITALITY

creating a-place-to-be

It is the place where hospitality investigation between actions and shapes are more deeply developed because of the reduced freedom connected with the existing boundaries.

Marcello Chiarenza, installazione, 1997

# New Museography: Tradition/Transition

“Diffused Museum”: Networks and Systems of Museums in Places

full professor	Luca Basso Peressut
associate professor	Gennaro Postiglione
assistant professor	Mariella Brenna
	Sergio Boidi
	Imma C. Forino
temporary reseacher	Alessandra Vasile
PhD students	Alessio Conti
	Cristina Fiordimela
	Francesca Rapisarda
	Daria De Seta
	Amedeo Giordano



## Research theme Linear park along Martesana Canal, Milan

The work tries to arrange in a system structures and places dispersed along the Martesana Canal (connecting Milan with Trezzo sull'Adda, 36 Km far away), proposing the idea of a diffused museum as a overall strategy to re-use and re-call in life a wide part of a territory facing both sides of the canal. Introducing “landscape equipments”, the proposal transforms the 36 Km long water path into a system of places and events, connected with daily life of sub-urban population.

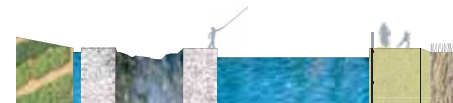
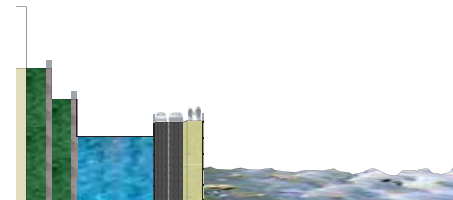
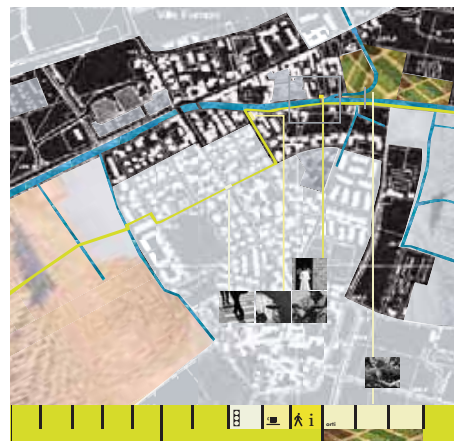
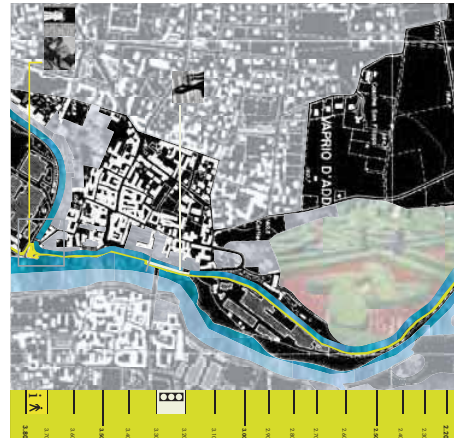
**Responsible: Gennaro Postiglione**

### design proposal

#### diploma work

ZANETTI, C., Linear park along the Martesana Canal, Milano 2004

LAB1/2004,  
Linear park along the Martesana Canal,  
Milano





## Research theme Rural Heritage and Sustainable tourism: Humac village in Croatia

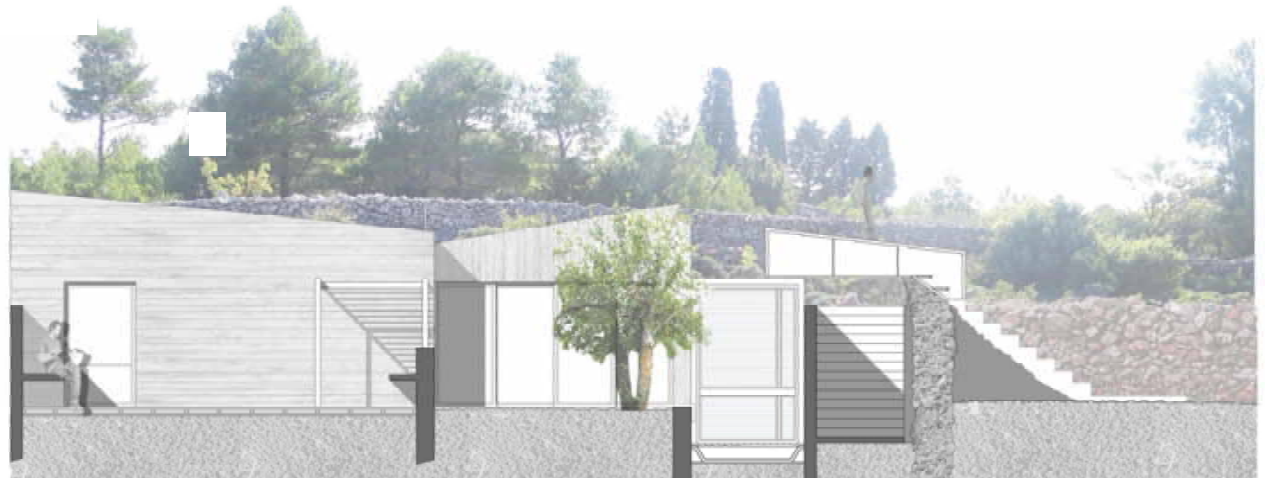
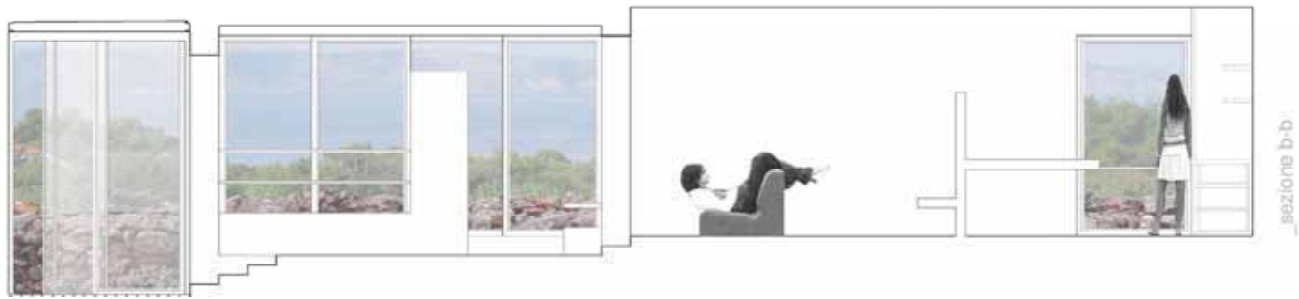
Landscape can be considered the cultural identity of a territory.

Placed in a panoramic position in the centre of the island of Hvar, the ancient and small seasonal village of Humac, today semi-abandoned, has been singled out as a typical Croatian rural culture of living and inhabit the territory, and therefore a meaningful form of cultural landscape patrimony, that needs a strategic and synergic system of rediscovering, divulgation and valorisation.

The proposal is to transform the village in an International Information & Education Centre: a place where private companies, public institutions, etc., can arrange intensive meetings and/or workshops, for short periods. This programme fits to the Humac recognized characters and identity and it will bring new life to the rural heritage site.

**Responsible: Gennaro Postiglione**





## Research theme The Atlantic Wall re-use

The Atlantic Wall is one of the last major defence lines of this century, built by German occupation forces in the period 1939-1944 along the coasts of France, Channel Islands (GB), Belgium, Netherlands, Germany, Denmark and Norway. During this period more than 10.000 heavy concrete bunkers were built along almost 6.000 km of coast, a number impressive in quantity and in the cost and labour involved. Many prisoners were forced to work on the construction and lost their lives there, intersecting private stories with social history.









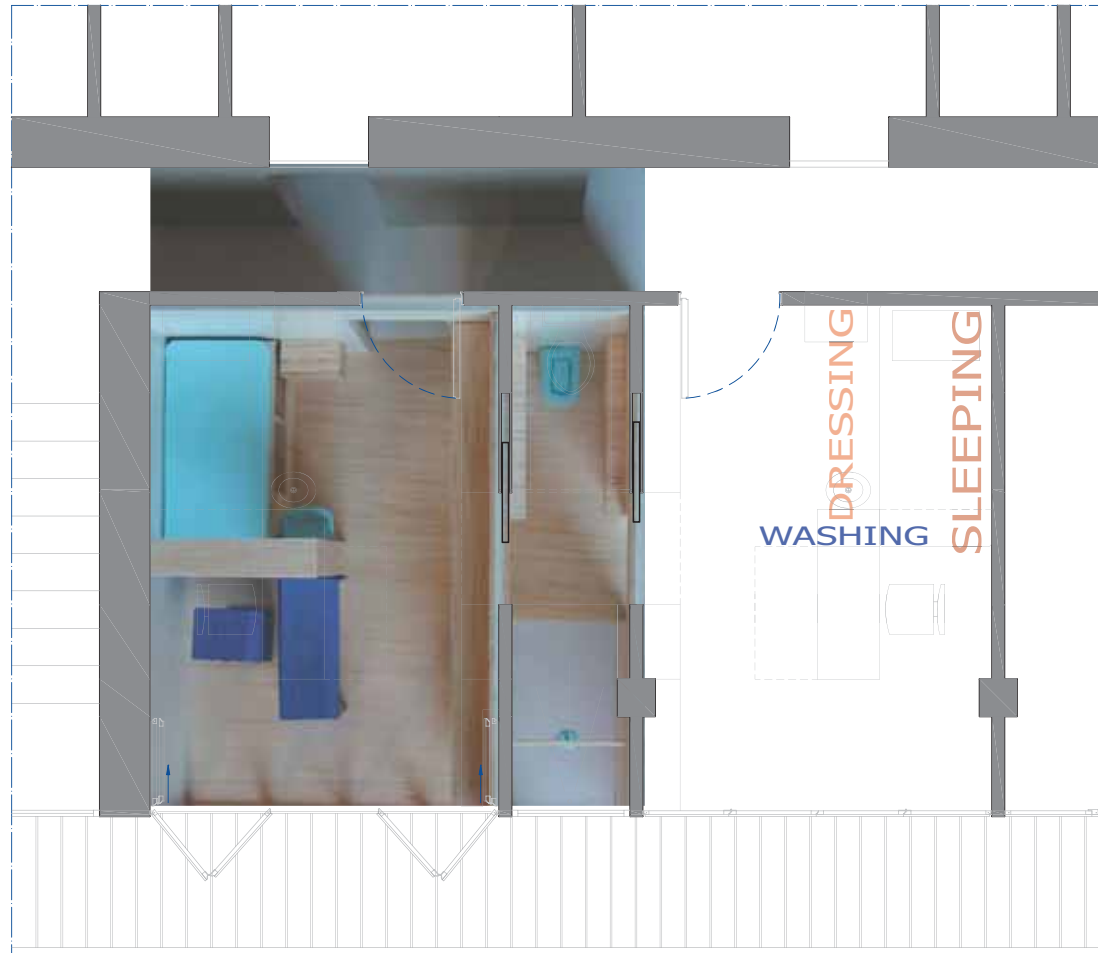
## Research Area 4 “Acting upon the existent”: re-writing spaces



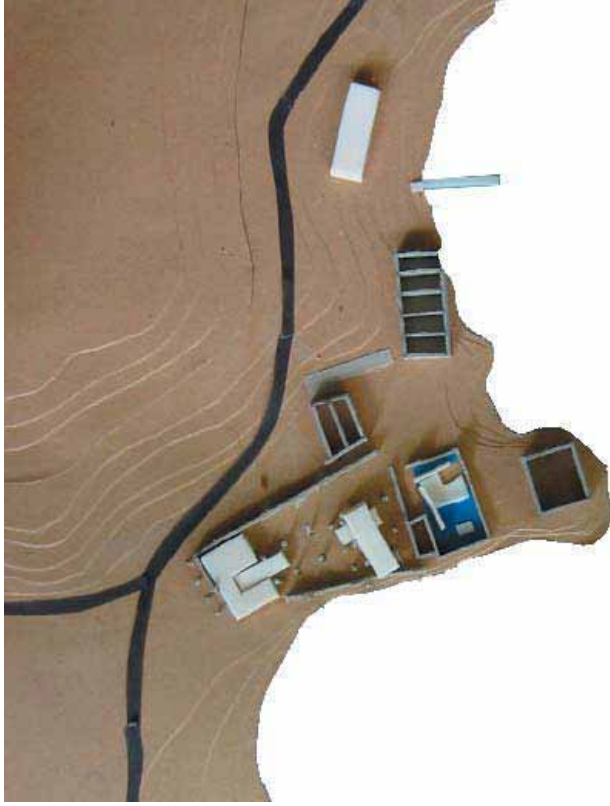
The infinite world of Google Map  
Architecture of Interiors as re-writing space praxis  
Mapping the existent for new opportunities of use







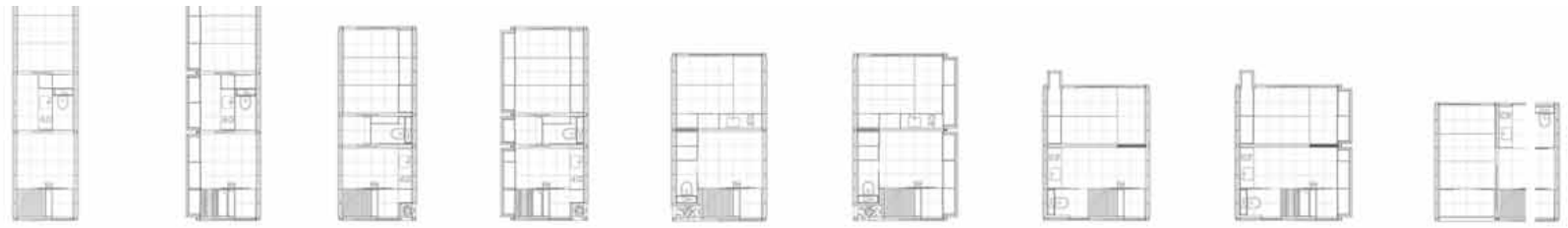
single room plan not to scale





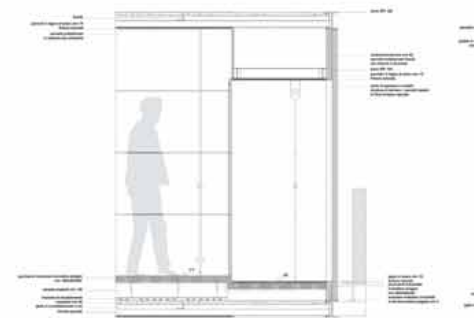


# APARTMENT

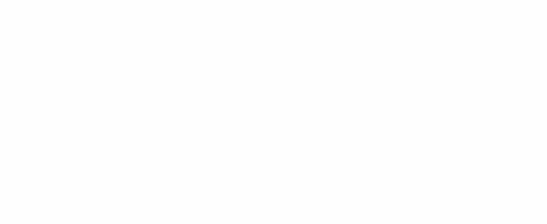
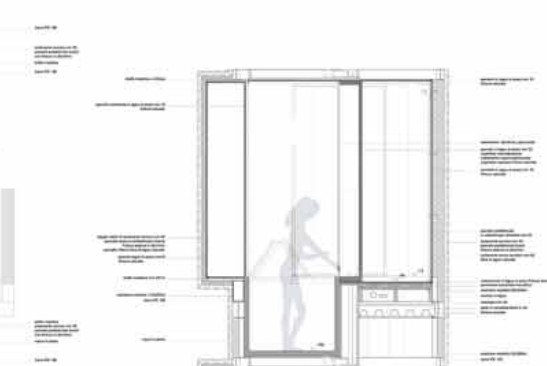


+ 18 TATAMI

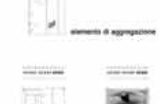
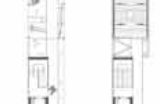
AMBIENTAZIONI ESTERNE DETTAGLI

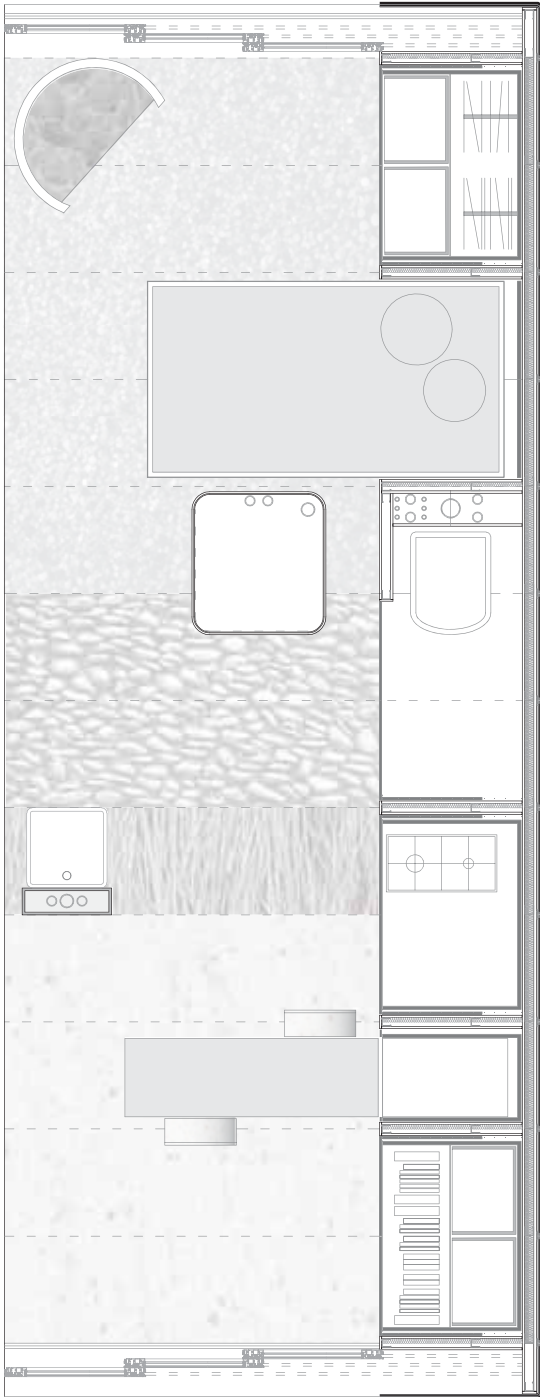


DIMENSIONAMENTO ATTREZZATURE + AREA DI UTILIZZO

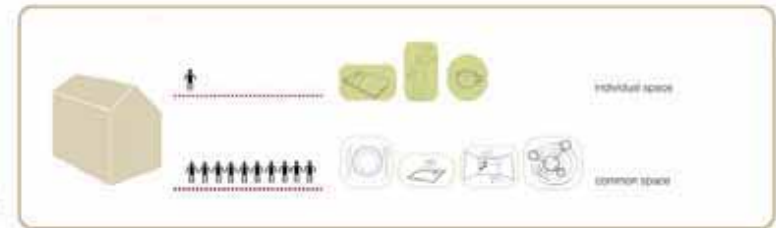


AMBIENTAZIONI INTERNE COLLEGAMENTI VERTICALI

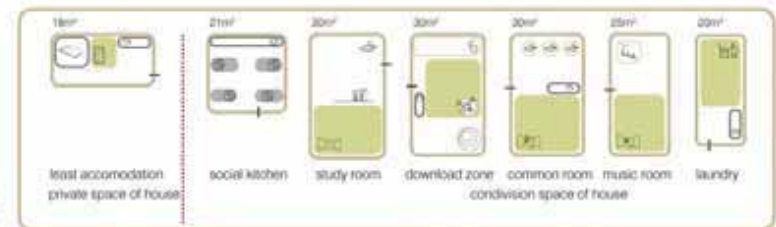


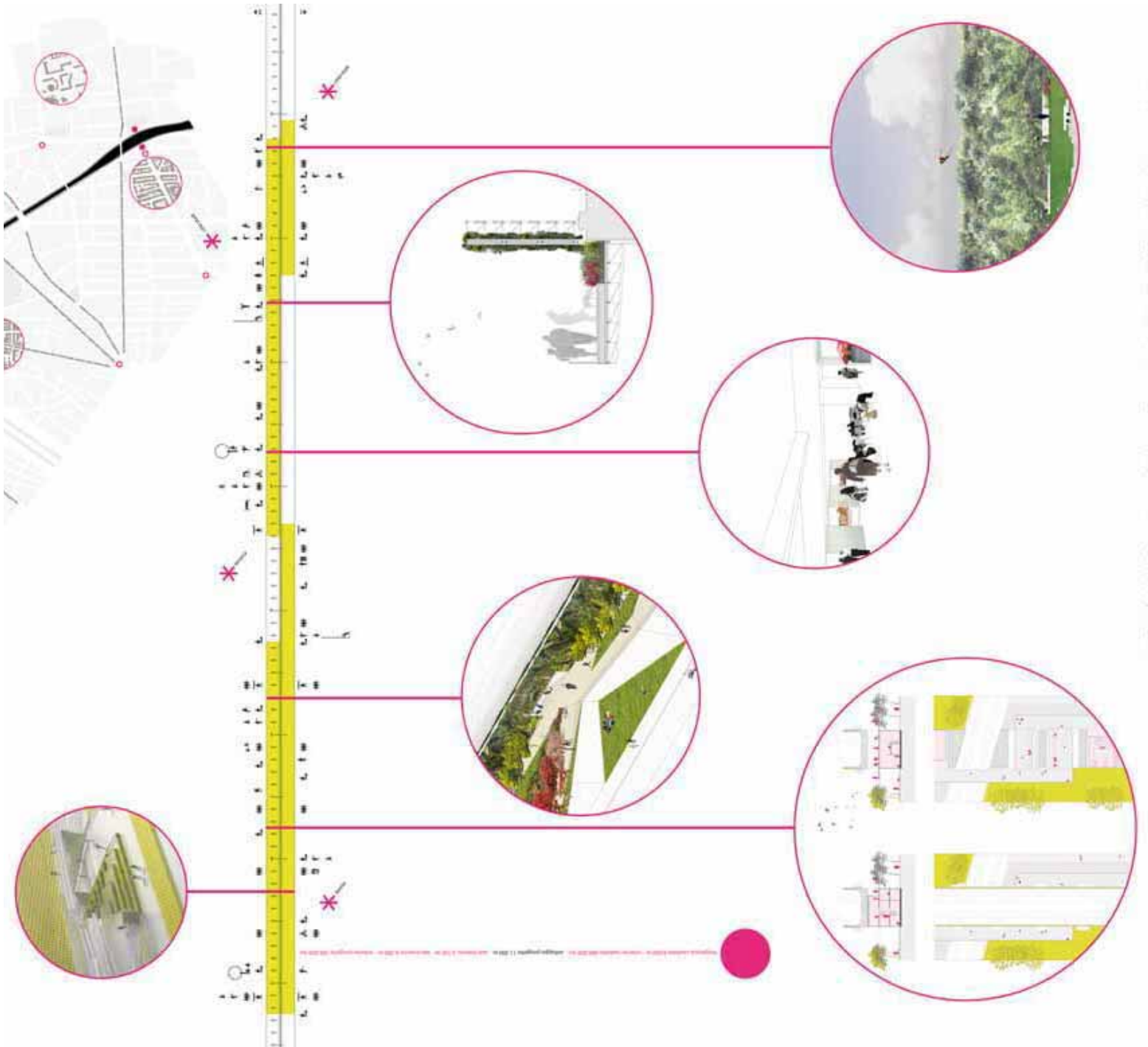


3



4







**Il ruolo del verde urbano**

Il verde urbano svolge un ruolo fondamentale nel migliorare la qualità della vita e l'ambiente. Contribuisce a ridurre l'inquinamento, a mitigare l'effetto serra e a creare spazi di ricreazione per i cittadini.

**Benefici del verde urbano:**

- Migliora la qualità dell'aria e riduce i livelli di inquinamento.
- Mitiga l'effetto serra e riduce le temperature urbane.
- Creare spazi di ricreazione e socializzazione per i cittadini.
- Migliora la salute fisica e mentale della popolazione.
- Aumenta il valore immobiliare e l'attrattiva del territorio.

Questa mappa illustra la distribuzione delle aree verdi urbane in una specifica zona urbana. Le aree verdi sono indicate in verde, mentre le aree edificabili sono in grigio.

Diagrammi che illustrano diverse tipologie di spazi verdi urbani, come parchi, giardini e aree verdi lineari.

**Il ruolo del verde urbano**

Il verde urbano svolge un ruolo fondamentale nel migliorare la qualità della vita e l'ambiente. Contribuisce a ridurre l'inquinamento, a mitigare l'effetto serra e a creare spazi di ricreazione per i cittadini.

**Benefici del verde urbano:**

- Migliora la qualità dell'aria e riduce i livelli di inquinamento.
- Mitiga l'effetto serra e riduce le temperature urbane.
- Creare spazi di ricreazione e socializzazione per i cittadini.
- Migliora la salute fisica e mentale della popolazione.
- Aumenta il valore immobiliare e l'attrattiva del territorio.

Questa mappa illustra la distribuzione delle aree verdi urbane in una specifica zona urbana. Le aree verdi sono indicate in verde, mentre le aree edificabili sono in grigio.

Diagrammi che illustrano diverse tipologie di spazi verdi urbani, come parchi, giardini e aree verdi lineari.

**Il ruolo del verde urbano**

Il verde urbano svolge un ruolo fondamentale nel migliorare la qualità della vita e l'ambiente. Contribuisce a ridurre l'inquinamento, a mitigare l'effetto serra e a creare spazi di ricreazione per i cittadini.

**Benefici del verde urbano:**

- Migliora la qualità dell'aria e riduce i livelli di inquinamento.
- Mitiga l'effetto serra e riduce le temperature urbane.
- Creare spazi di ricreazione e socializzazione per i cittadini.
- Migliora la salute fisica e mentale della popolazione.
- Aumenta il valore immobiliare e l'attrattiva del territorio.

Questa mappa illustra la distribuzione delle aree verdi urbane in una specifica zona urbana. Le aree verdi sono indicate in verde, mentre le aree edificabili sono in grigio.

Diagrammi che illustrano diverse tipologie di spazi verdi urbani, come parchi, giardini e aree verdi lineari.

## Crea il tuo spazio!

**Il ruolo del verde urbano**

Il verde urbano svolge un ruolo fondamentale nel migliorare la qualità della vita e l'ambiente. Contribuisce a ridurre l'inquinamento, a mitigare l'effetto serra e a creare spazi di ricreazione per i cittadini.

**Benefici del verde urbano:**

- Migliora la qualità dell'aria e riduce i livelli di inquinamento.
- Mitiga l'effetto serra e riduce le temperature urbane.
- Creare spazi di ricreazione e socializzazione per i cittadini.
- Migliora la salute fisica e mentale della popolazione.
- Aumenta il valore immobiliare e l'attrattiva del territorio.

Questa mappa illustra la distribuzione delle aree verdi urbane in una specifica zona urbana. Le aree verdi sono indicate in verde, mentre le aree edificabili sono in grigio.

Diagrammi che illustrano diverse tipologie di spazi verdi urbani, come parchi, giardini e aree verdi lineari.

**Il ruolo del verde urbano**

Il verde urbano svolge un ruolo fondamentale nel migliorare la qualità della vita e l'ambiente. Contribuisce a ridurre l'inquinamento, a mitigare l'effetto serra e a creare spazi di ricreazione per i cittadini.

**Benefici del verde urbano:**

- Migliora la qualità dell'aria e riduce i livelli di inquinamento.
- Mitiga l'effetto serra e riduce le temperature urbane.
- Creare spazi di ricreazione e socializzazione per i cittadini.
- Migliora la salute fisica e mentale della popolazione.
- Aumenta il valore immobiliare e l'attrattiva del territorio.

Questa mappa illustra la distribuzione delle aree verdi urbane in una specifica zona urbana. Le aree verdi sono indicate in verde, mentre le aree edificabili sono in grigio.

Diagrammi che illustrano diverse tipologie di spazi verdi urbani, come parchi, giardini e aree verdi lineari.

**Il ruolo del verde urbano**

Il verde urbano svolge un ruolo fondamentale nel migliorare la qualità della vita e l'ambiente. Contribuisce a ridurre l'inquinamento, a mitigare l'effetto serra e a creare spazi di ricreazione per i cittadini.

**Benefici del verde urbano:**

- Migliora la qualità dell'aria e riduce i livelli di inquinamento.
- Mitiga l'effetto serra e riduce le temperature urbane.
- Creare spazi di ricreazione e socializzazione per i cittadini.
- Migliora la salute fisica e mentale della popolazione.
- Aumenta il valore immobiliare e l'attrattiva del territorio.

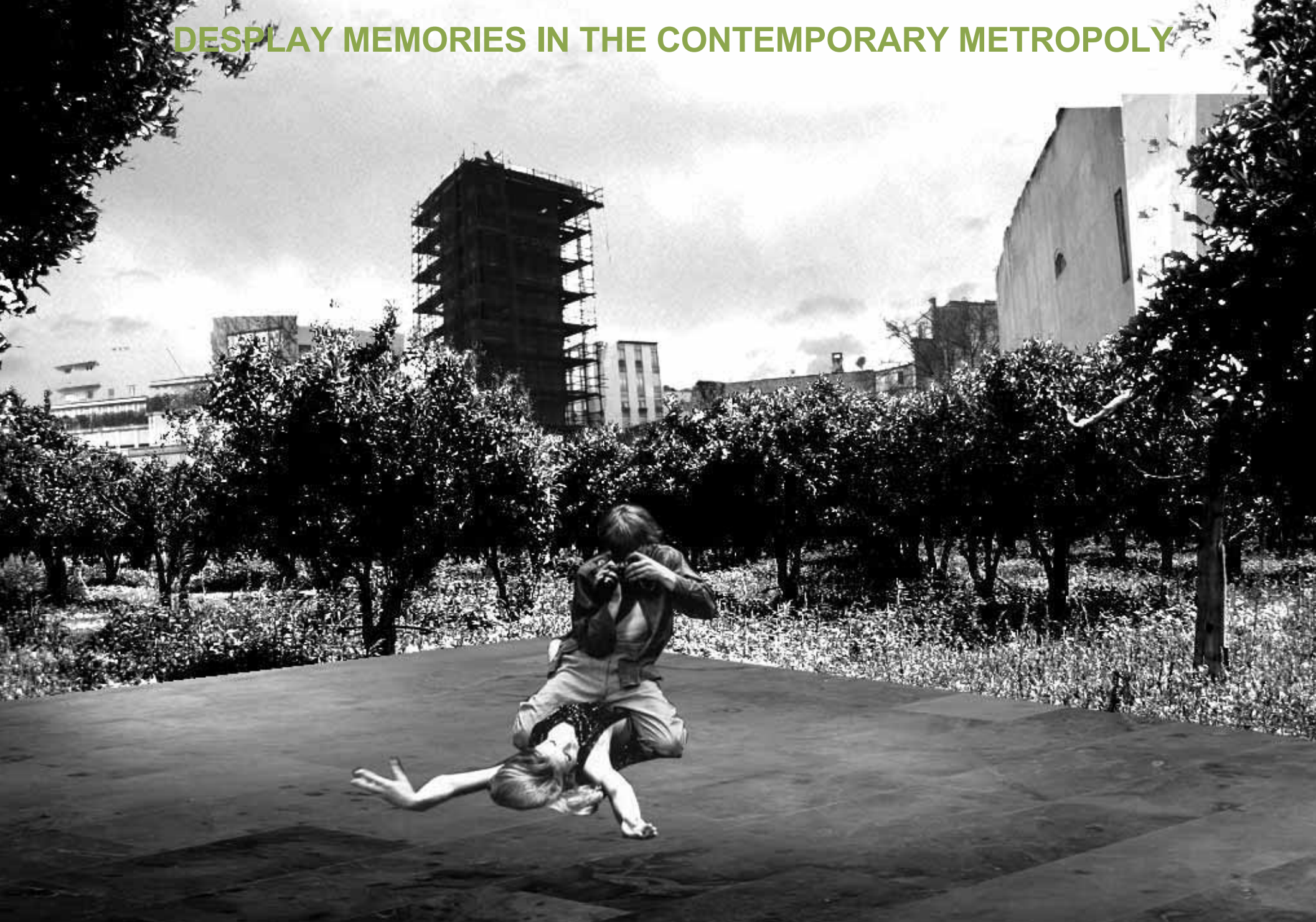
Questa mappa illustra la distribuzione delle aree verdi urbane in una specifica zona urbana. Le aree verdi sono indicate in verde, mentre le aree edificabili sono in grigio.

Diagrammi che illustrano diverse tipologie di spazi verdi urbani, come parchi, giardini e aree verdi lineari.

[illegible]



# DISPLAY MEMORIES IN THE CONTEMPORARY METROPOLY





## Words in Interiors



## The other tradition

## AWbunkers: possible re-use



[www.lablog.org.uk](http://www.lablog.org.uk)

"There are even gods here"  
[Heraclitus]