

INTERNI



architettura & abitare: HUMAN DIMENSION

place-gesture-use-meaning

a fundamental parameter to recognize whatever project as characterized by an approach within the field of Interiors is the evidence of human presence in the design process. Not only in terms of human scale metrics, from the use of inches and foot to more sophisticated golden section and so on, but in terms of the project to be capable to show existing relationships between space, that we prefer to call "place", gesture use and meaning

Giotto, l'annuncio ad Anna, 1303-04

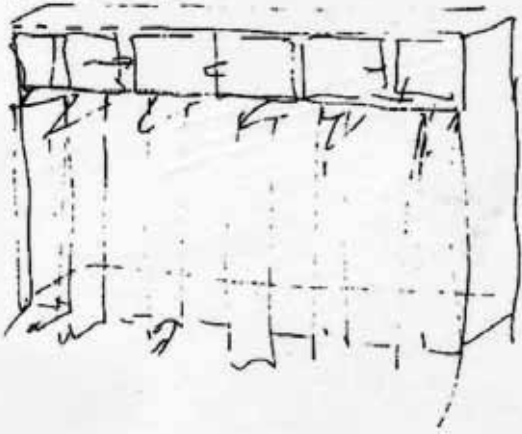


architettura & abitare: SELF DIMENSION

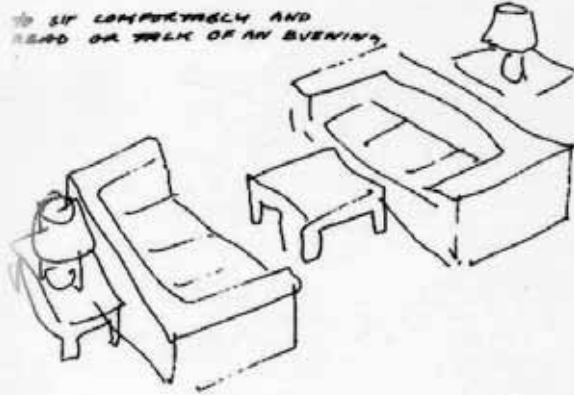
physical and metaphoric

This also explains why, working with Interiors at school, the self-dimension is often called in evidence: the reflexive action of involving “yourself” in the design process is almost the only strategy both to avoid extreme generalization and to give depth of meaning to design choices

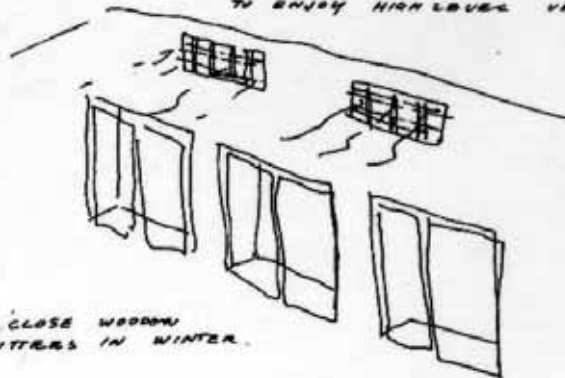
TO HAVE EASY ACCESS TO POSSESSIONS WITHOUT SAVING THEIR PRESENCE ALL THE TIME



TO SIT COMFORTABLY AND READ OR TALK OF AN EVENING



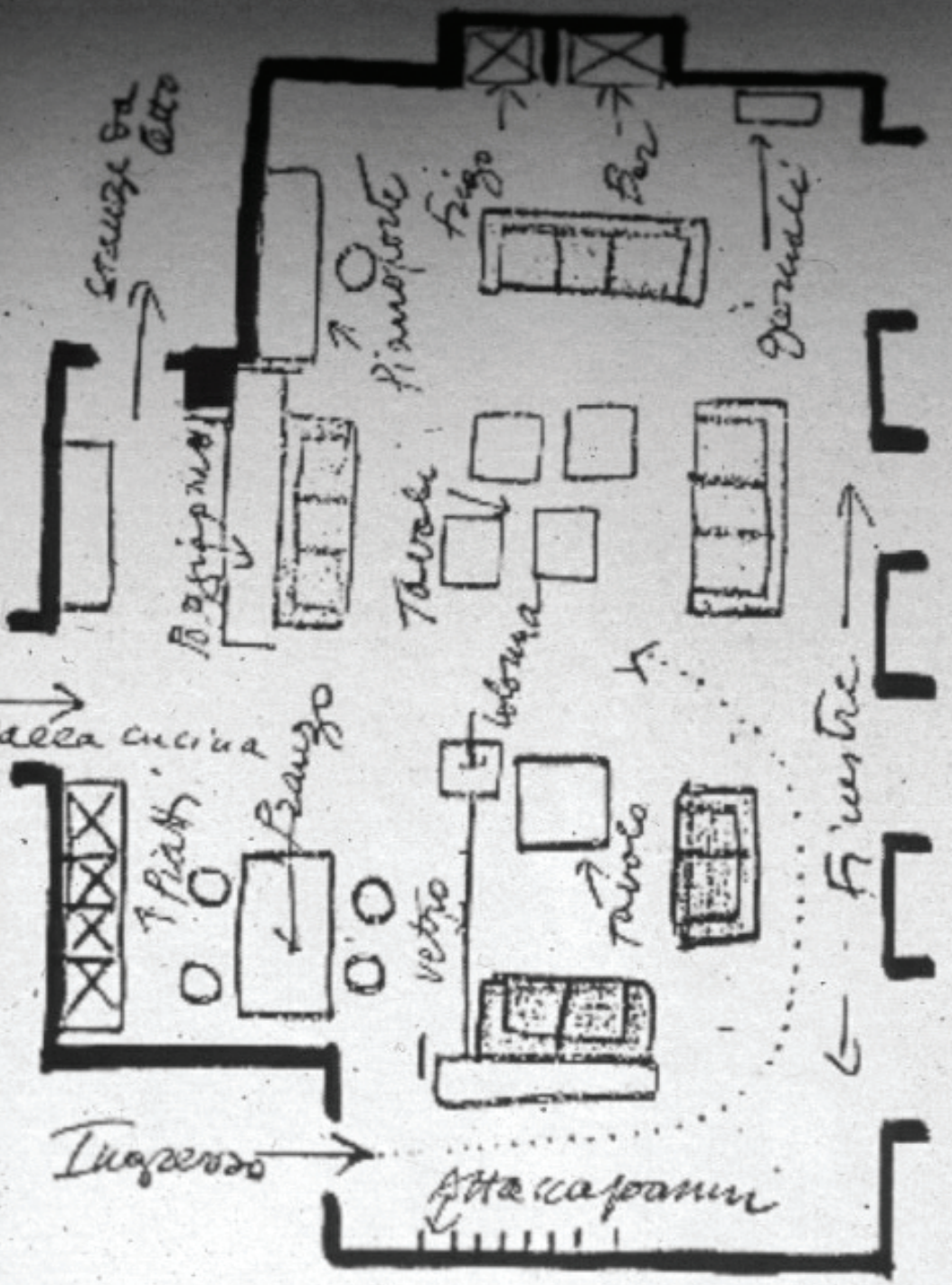
TO ENJOY HIGH LEVEL VENTILATION IN SUMMER



TO CLOSE WINDOW SHUTTERS IN WINTER

architettura & abitare: AMBIENT-azioni

Shape and gesture in the interior are strictly connected and this topic represents the basic specificity of interior culture. Therefore, Interiors represent, rather than an operative field in itself, an approach to design, focused on the relevance of gesture, considered as the action-building-the-place.



architettura & abitare: FURNITURE

presence&role of objects

The character and the quality of an ambient is defined by the system of objects and of actions this system can give rise to: they construct precise settings, suggest models and lifestyles, support cultural endeavours.

Ettore Sottsass, schizzo di arredo, 1972



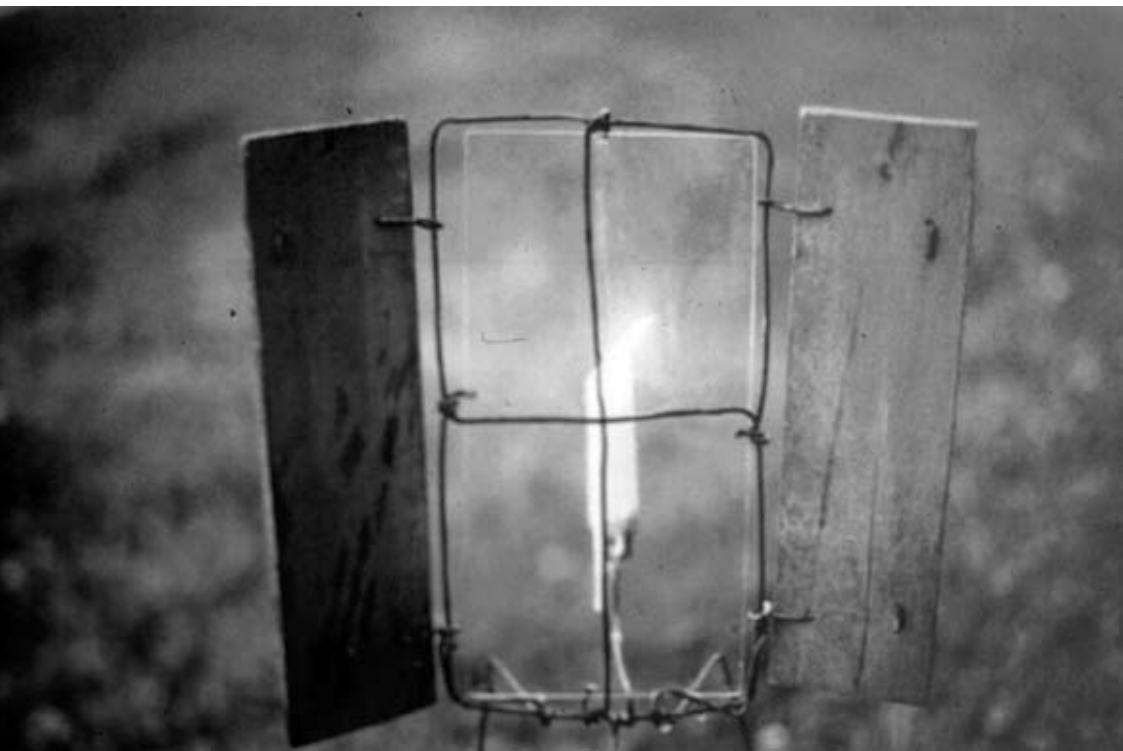
architettura & abitare: THE PARADIGMA OF THE EXISTENT 1

interior/into-something
the querelle of the origin[al]
the querelle of the tradition[al]

The practice of interiors, in this view, is addressed and suitable both to new design and to intervention on/around existent since it takes care of relationship between gesture and space, with the help of objects. However, “working on the existing” is paradigmatic for the discipline: the already existing constructions are the place where space has to be thought around the subject, where new gestures need to “find home”.



architettura & abitare: THE PARADIGMA OF THE EXISTENT 2
interior/into-something
the querelle of the origin[al]
the querelle of the tradition[al]



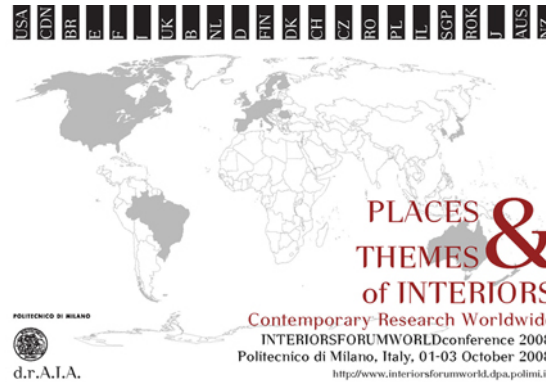
architettura & abitare: HOSPITALITY

creating a-place-to-be

It is the place where hospitality investigation between actions and shapes are more deeply developed because of the reduced freedom connected with the existing boundaries.

Marcello Chiarenza, installazione, 1997

corsi attivi: Rossella Buti, Gennaro Postiglione, Giacomo Rizzi > inizio comune: convegno interni 1-3 ottobre



www.lablog.org.uk