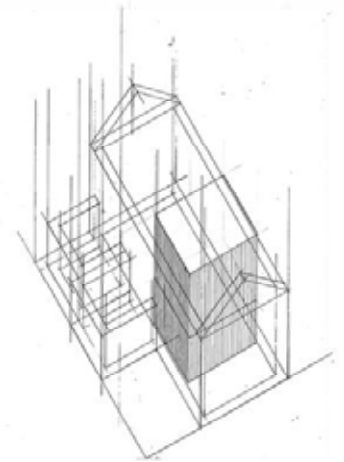
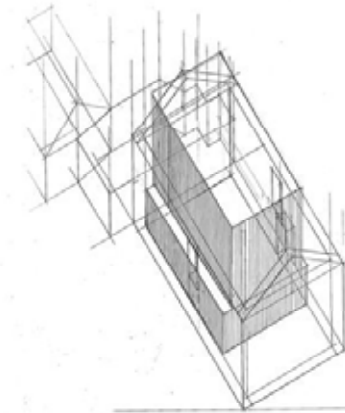
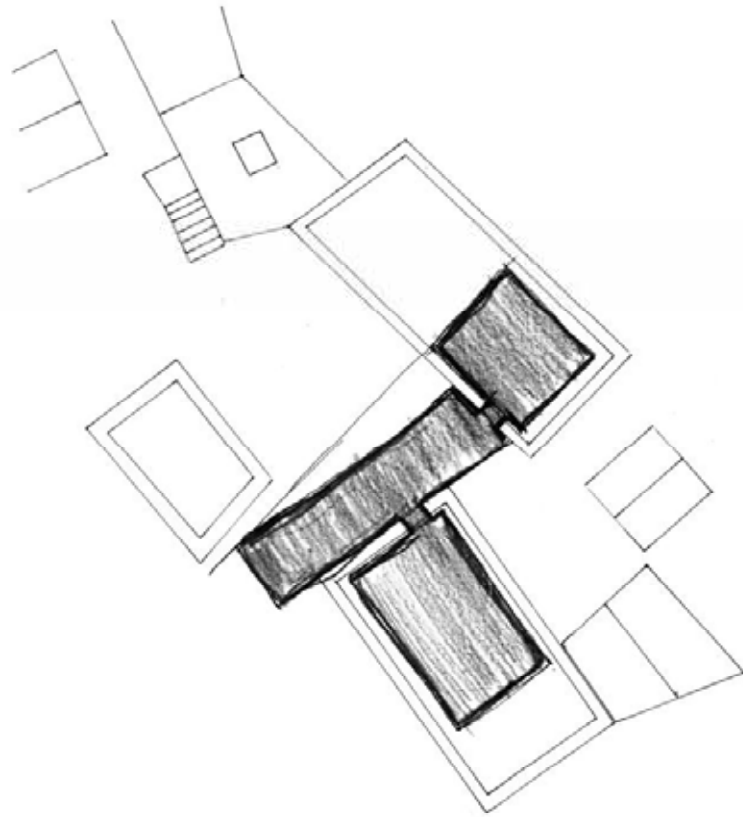






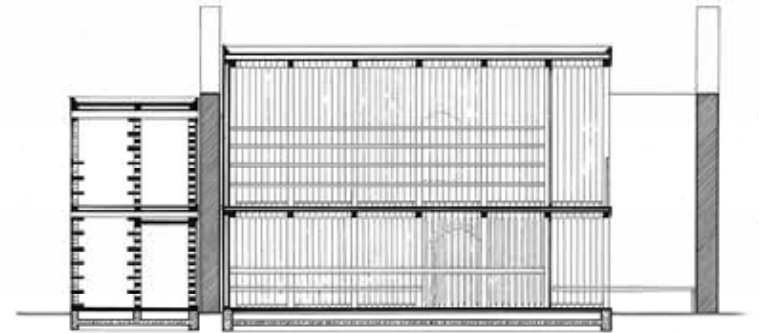
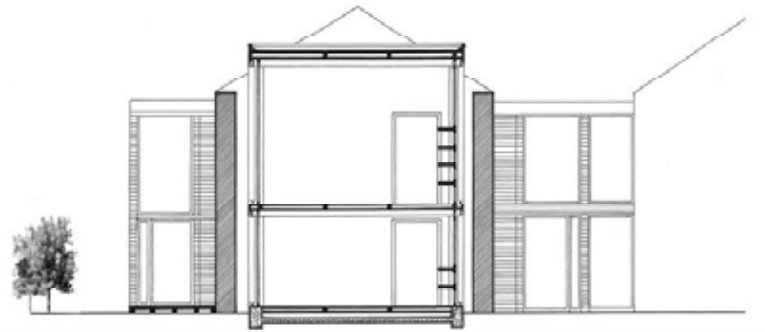
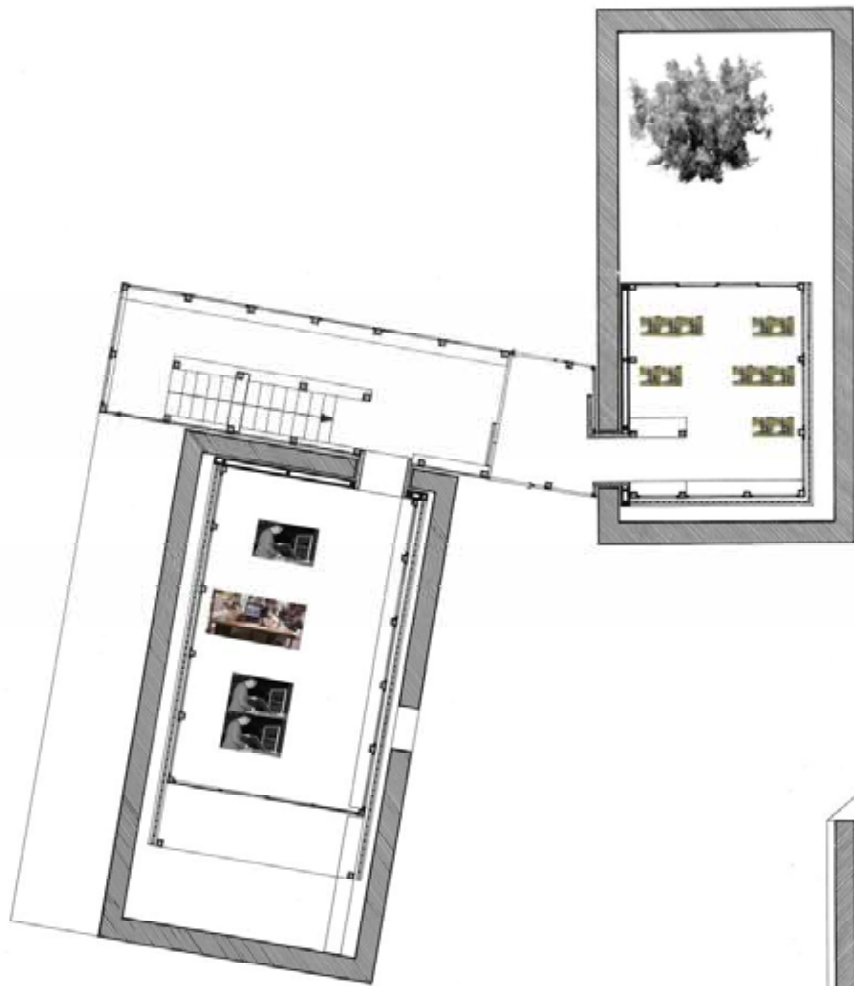
HUMAC IMPRESSIONS

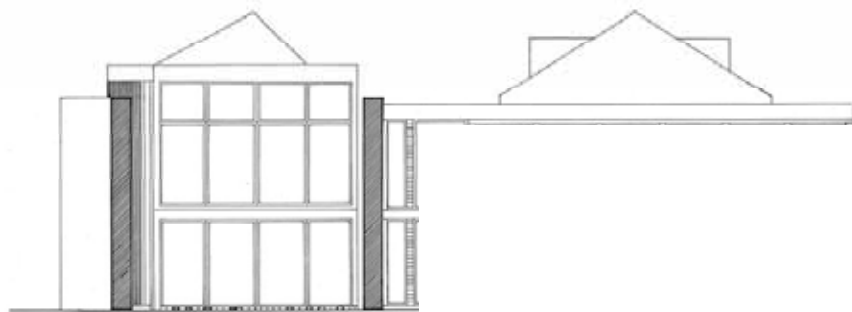
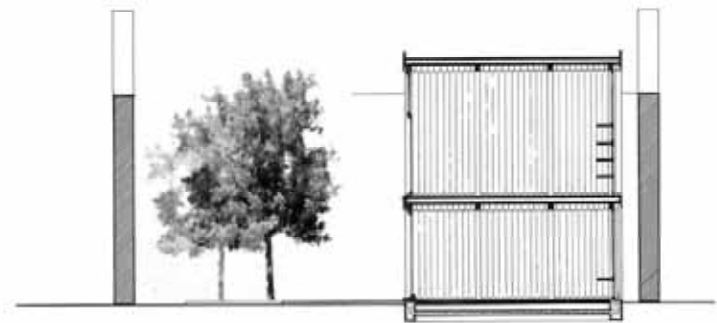
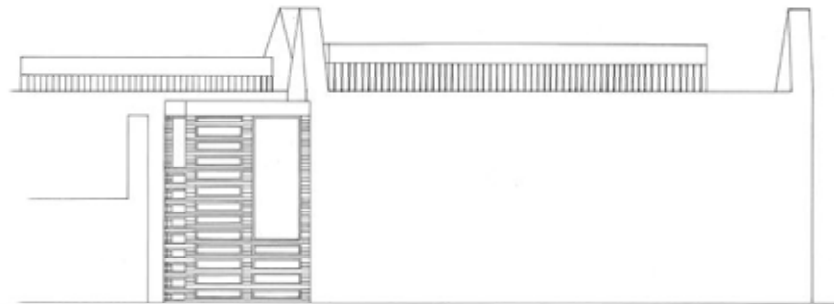
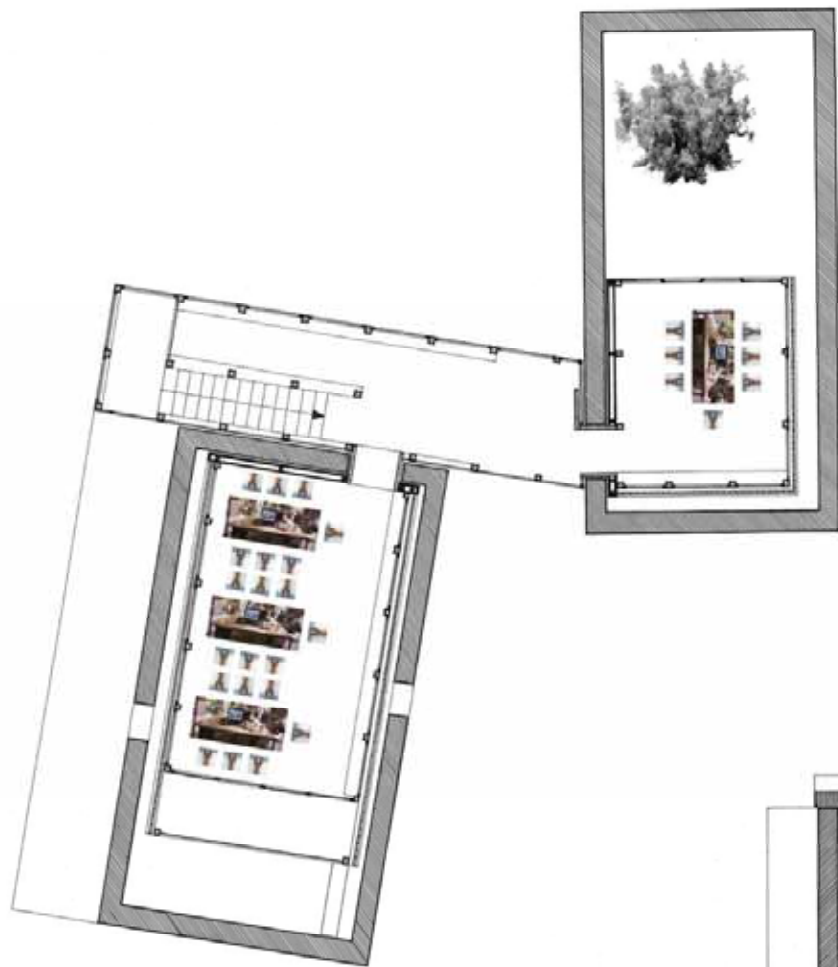


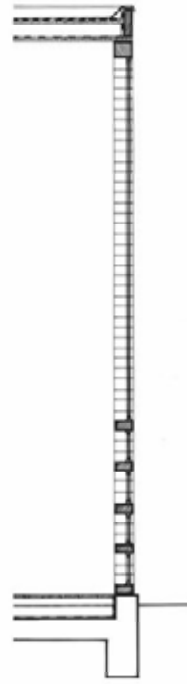
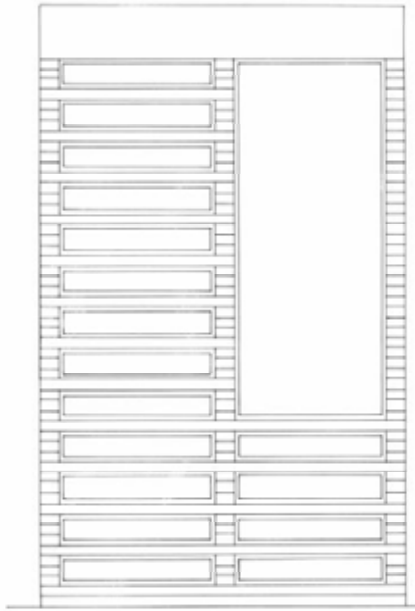
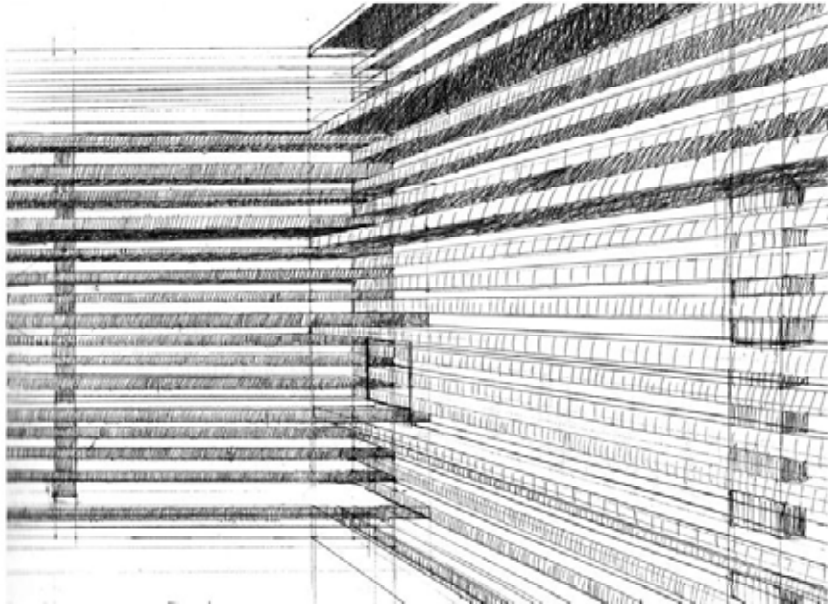
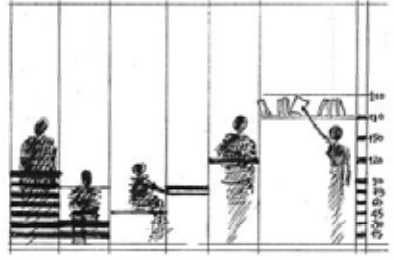
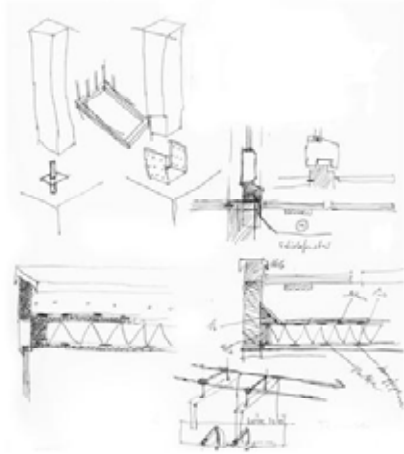


IDEA ROOMPROGRAM

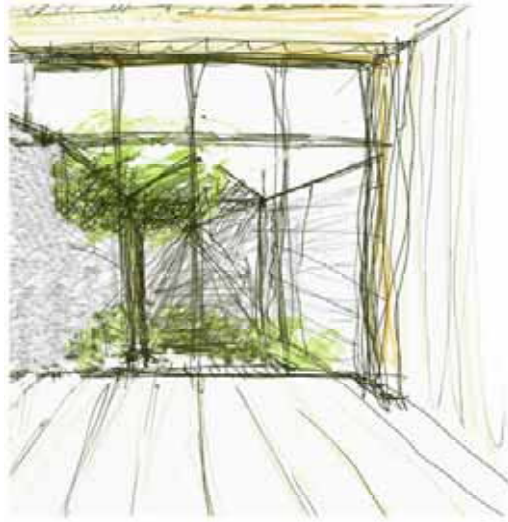














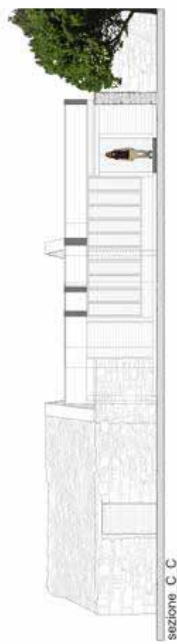




sezione\_E\_E



sezione\_F\_F



sezione\_C\_C



sezione\_D\_D



sezione\_A\_A



sezione\_B\_B



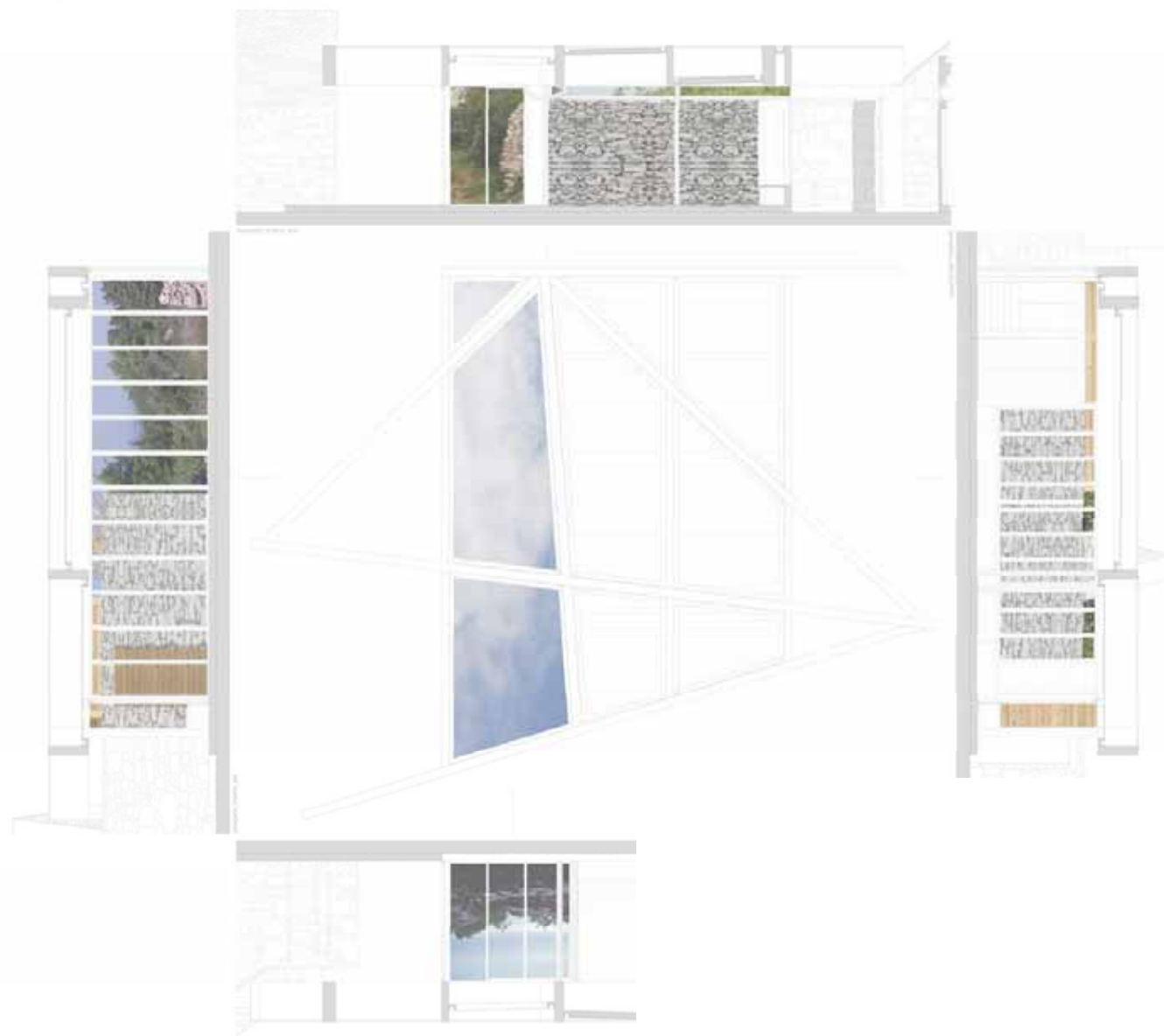
sezione\_A\_A

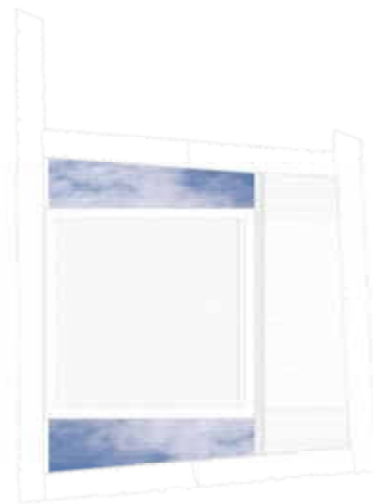
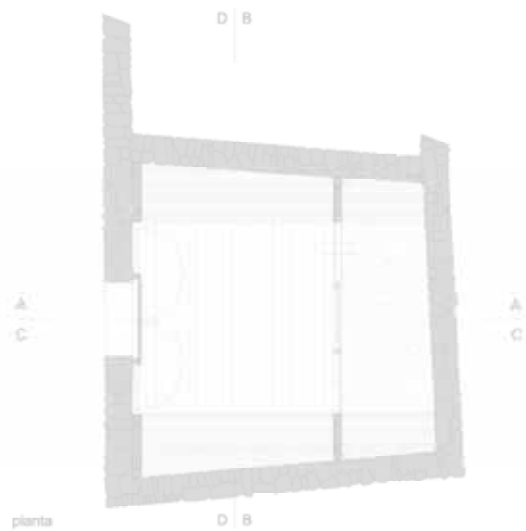
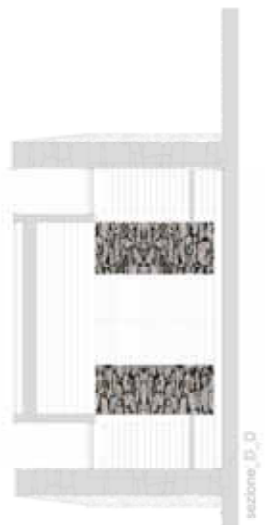


sezione\_C\_C



sezione\_F\_F



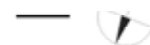
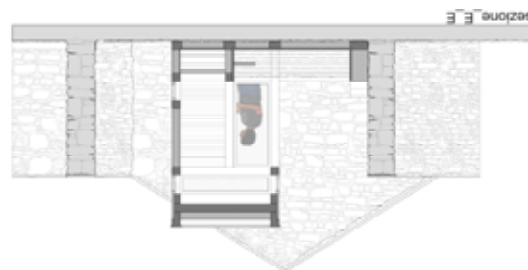
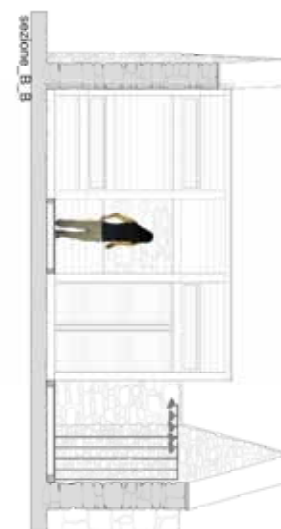
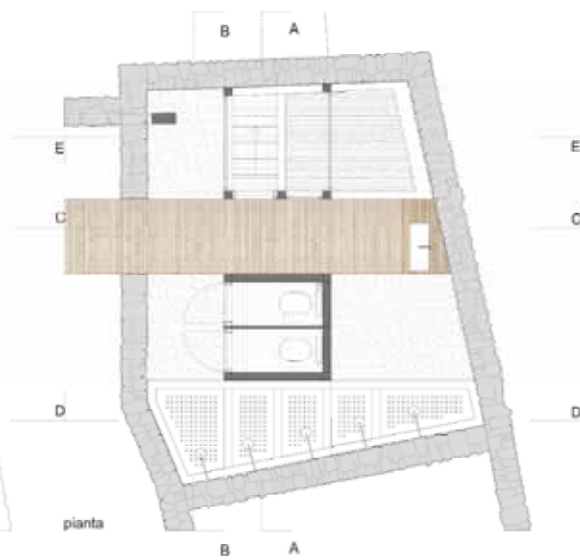




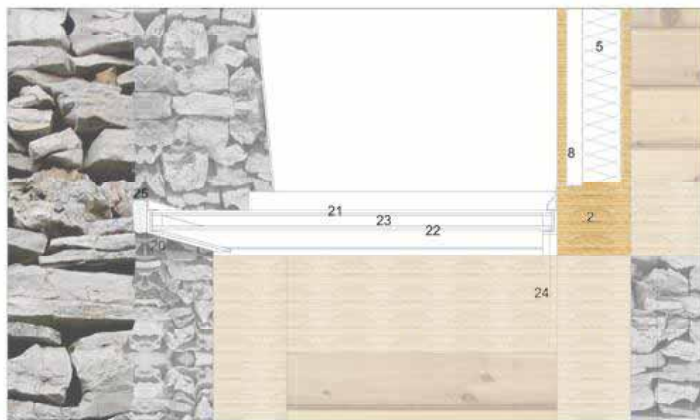
sezione\_C\_C



sezione\_D\_D







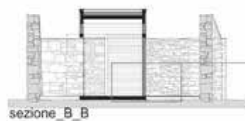
sezione verticale  
 dettaglio copertura trasparente della sala\_lettura  
 1:5



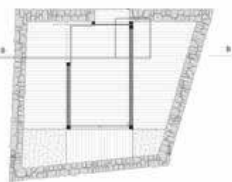
sezione verticale  
 dettaglio incastro panca della sala\_lettura  
 1:5



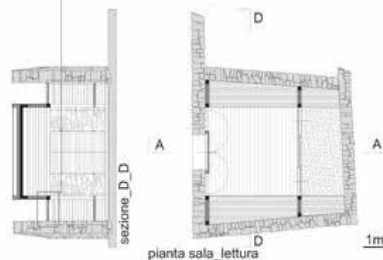
sezione orizzontale  
 raccordo muro - pilastro  
 1:10



sezione\_B\_B



pianta deposito sala\_lavoro

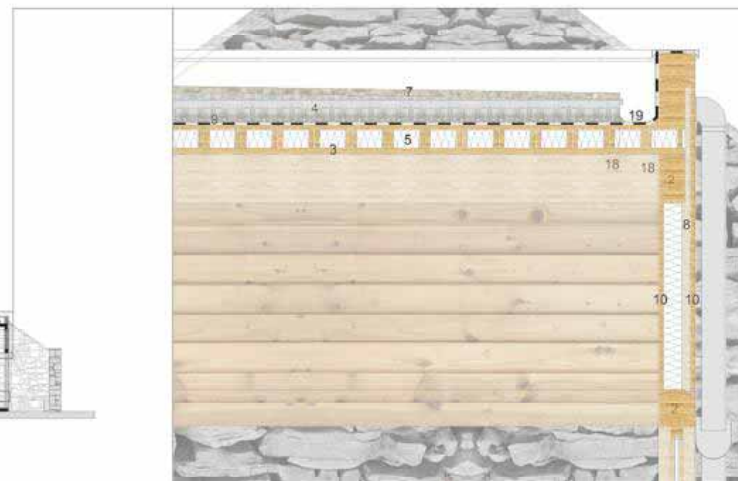


sezione\_A\_A

pianta sala\_lettura



sezione verticale  
 muro e pavimentazione  
 1:10



sezione verticale  
 dettaglio copertura e raccolta acque  
 1:10

LEGENDA

- 1 - Pilastro in legno lamellare sagomato
- 2 - Trave in legno lamellare
- 3 - Solaio massiccio con sezione a cassetta
- 4 - Massetto delle pendenze alleggerito con argilla
- 5 - Isolante
- 6 - Barriera al vapore
- 7 - Rivestimento protettivo calpestabile
- 8 - Intercapedine aerata
- 9 - Impermeabilizzazione a guaina liquida Mapelastic
- 10 - Rivestimento in legno profilato da 19 mm
- 11 - Pavimento in doghe maschiate da 30 mm
- 12 - Assito in legno maschiato da 20 mm
- 13 - Pavimento flottante in doghe maschiate da 15 mm
- 14 - Tappetino di posa
- 15 - Montante in legno massiccio da 80x60 mm
- 16 - Distanziatore verticale in legno massiccio da 32x45 mm
- 17 - Supporto in legno massiccio da 110x80 mm
- 18 - Listello di legno massiccio
- 19 - Canale e scossalina in rame
- 20 - Profilato in alluminio a L
- 21 - Doppio vetro da 5 mm
- 22 - Doppio vetro da 4 mm
- 23 - Intercapedine
- 24 - Guarnizione di tenuta in silicone
- 25 - Giunto di tenuta in silicone
- 26 - Fondo di ghiaia e sabbia per livellamento e drenaggio
- 27 - Porta in legno lamellare scorrevole
- 28 - Supporto in legno massiccio da 80x60 mm

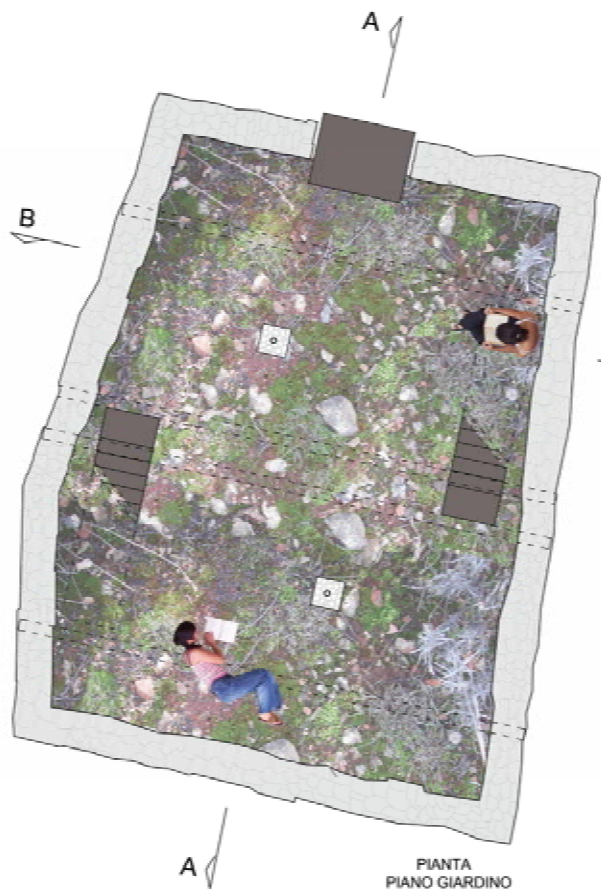




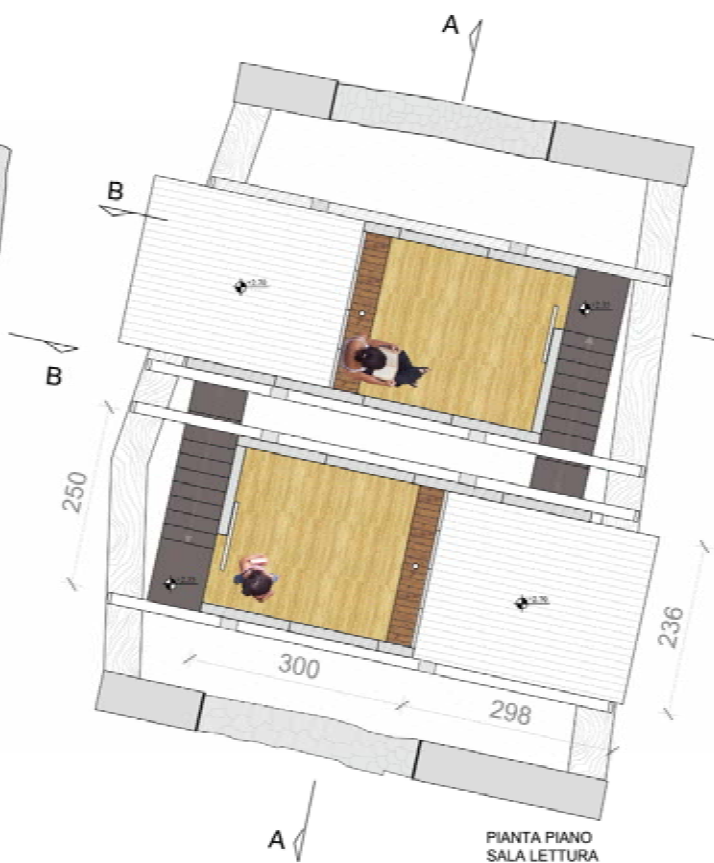
Maria Soo-Ran Accorsi\_Arianna Rossella



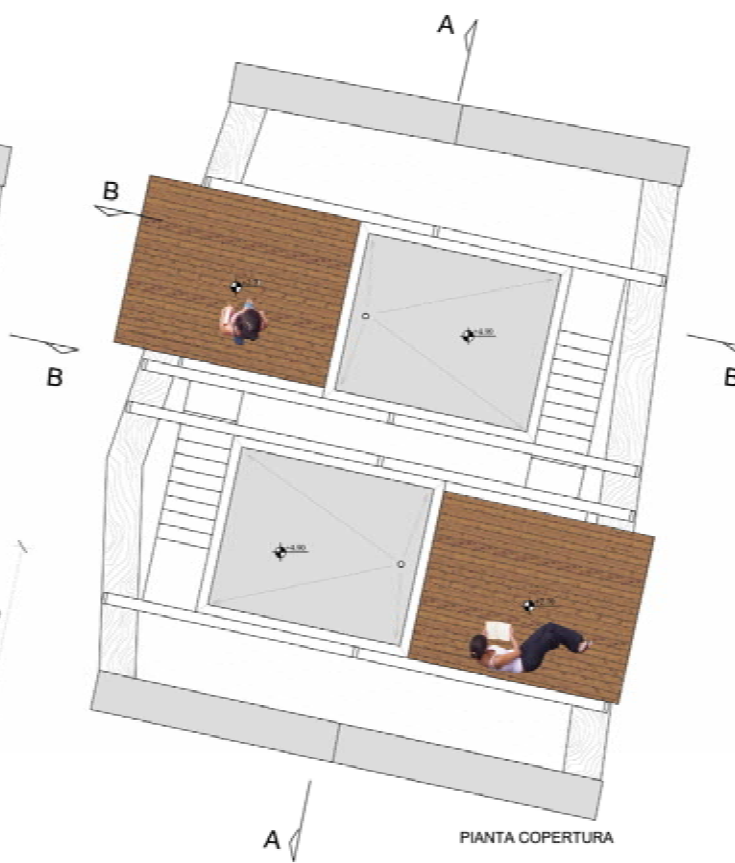




PIANTA  
PIANO GIARDINO



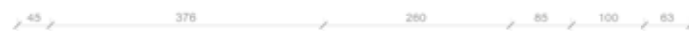
PIANTA PIANO  
SALA LETTURA



PIANTA COPERTURA



PROSPETTO EST



SEZIONE A-A





